

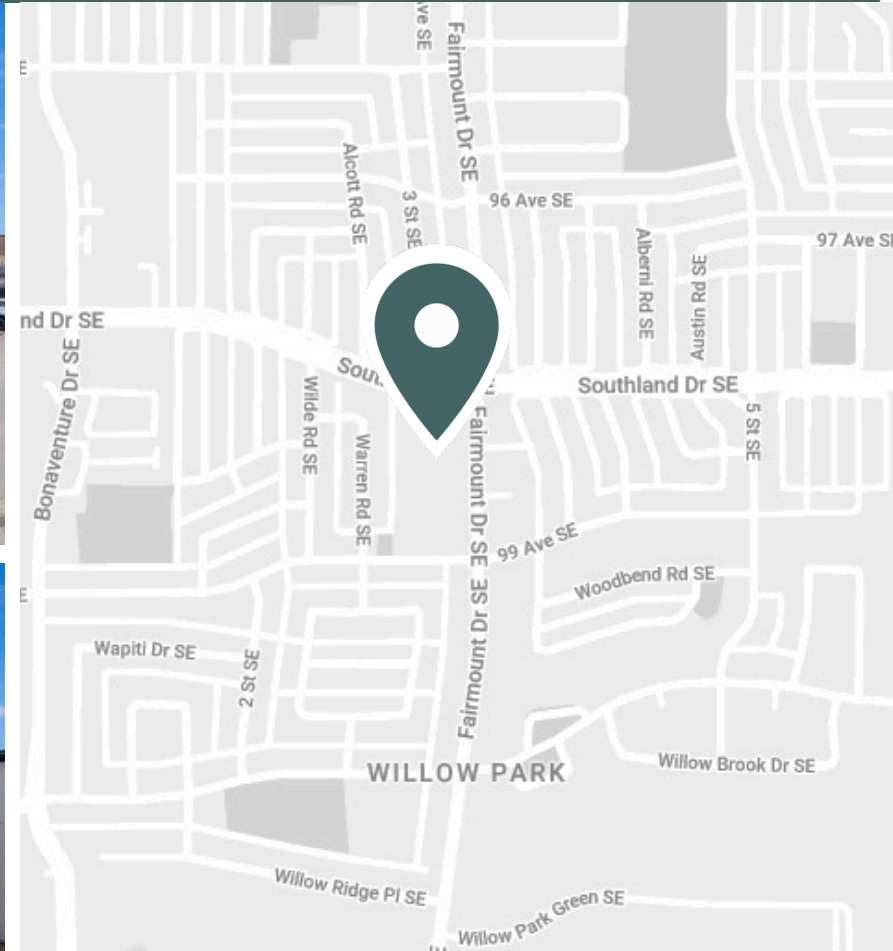
Fairmount Place

9919 Fairmount Drive South East, Calgary, AB



Demographics & Neighbourhood

Located in the affluent community of Willow Park, Fairmount Place Shopping Centre is anchored by Calgary's largest Italian grocer, The Italian Centre Shop, as well as RBC and Tim Hortons. Drawing customers from across the city of Calgary, this centre is ideally situated in a densely populated and diverse neighbourhood providing for everyday needs and more. Fairmount Place Shopping Centre is surrounded by several parks and schools, is seconds away from the busy intersection of Macleod Trail SE and Southland Dr SE, and under 10 minutes to DeerFoot Trail.



Neighbourhood Features



3-MINUTE DRIVE TO THE WILLOW PARK GOLF & COUNTRY CLUB



4-MINUTE DRIVE TO SOUTHCENTRE MALL



7-MINUTE DRIVE TO SUE HIGGINS PARK



Population (5km)
142,000



Bike Score
73



Household Income (5km)
\$136,000



Traffic count
26,000



Households (5km)
58,000



Nearest Bus line
10 City Hall/Southcentre - 0.1km



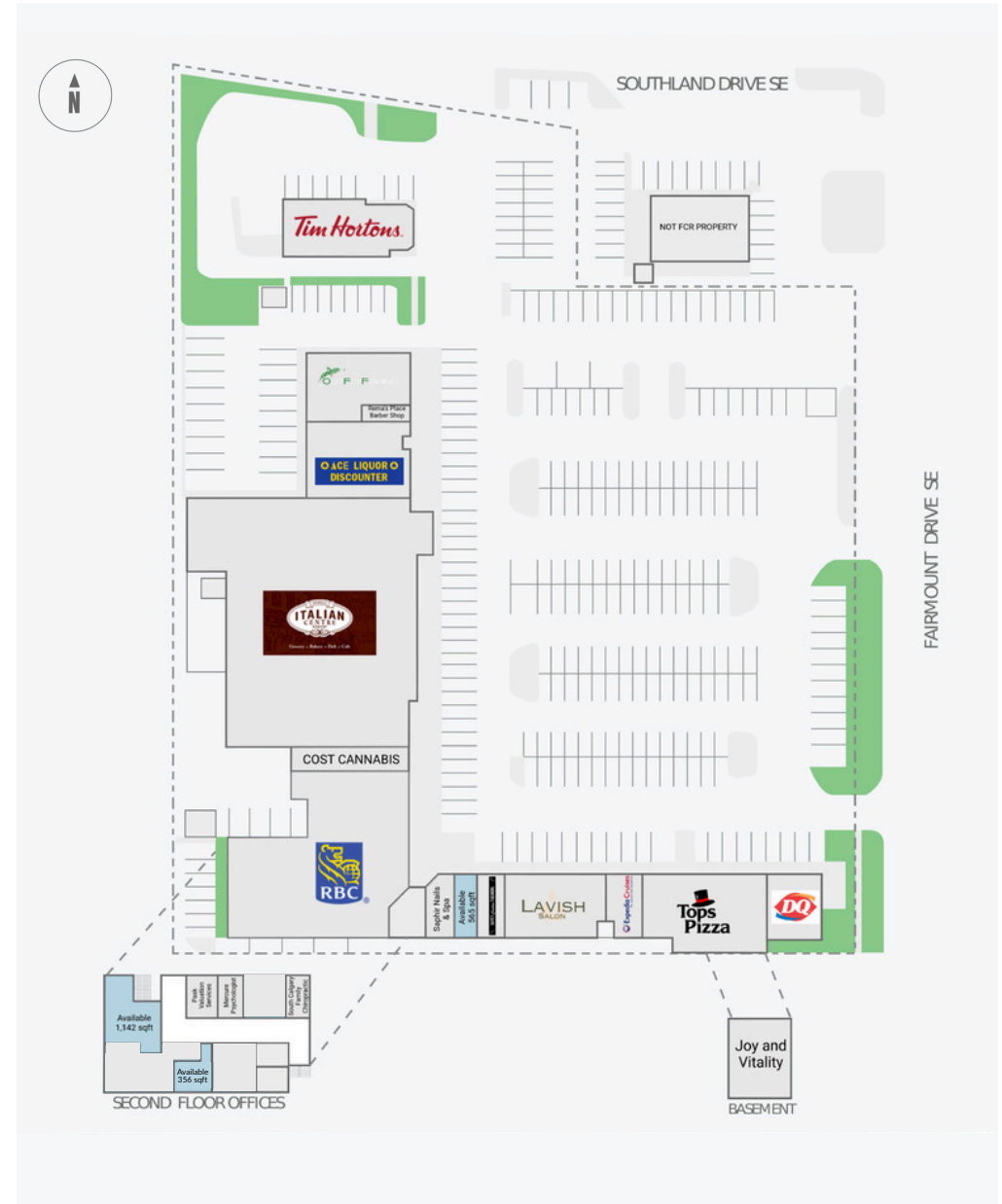
Nearest Rail line
Southland CTrain Station - 1.2km



Leasing Opportunities

Unit Number	SF	Ideal Uses	Availability
A01141A	565	Retail	Immediate
A02203A	356	Office	Immediate
A02206B	1,142	Fitness, Open plan office	Immediate

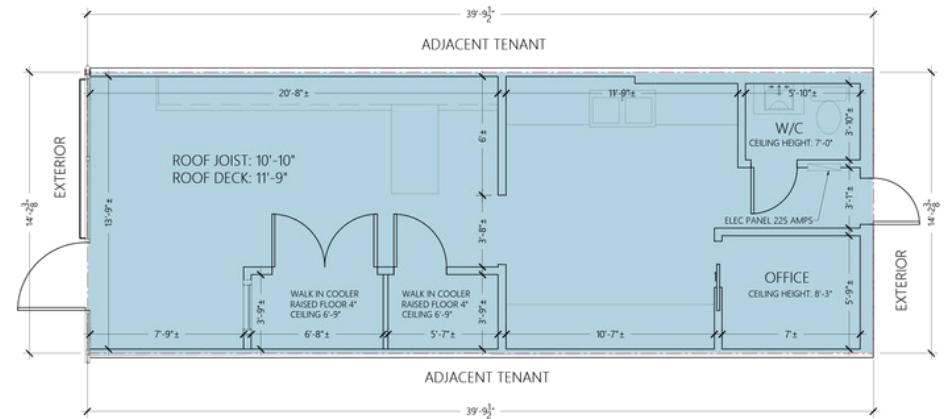
Fairmount Place Shopping Centre currently offers one retail space plus four office spaces ranging in size from 356 sf to 1,142 sf. Our prime location offers easy access to major highways and is minutes from public transportation, making it convenient for both employees and clients. Customize your space to fit your unique business needs.



Availabilities

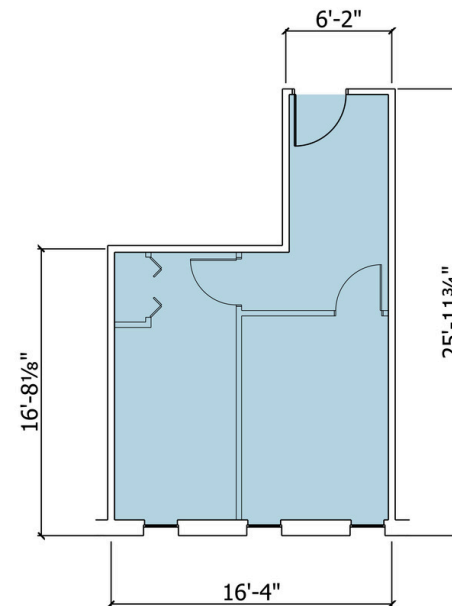
Size	565 SF
Unit Number	A01141A
Floor	Ground Floor
Availability	Immediate
Ideal Use	Retail
Additional Rent*	\$18.38 psf

*2026 Estimates and rates are subject to change



Size	356 SF
Unit Number	A02203A
Floor	2 nd Floor
Availability	Immediate
Ideal Use	Office
Additional Rent*	\$22.43 psf


*2026 Estimates and rates are subject to change

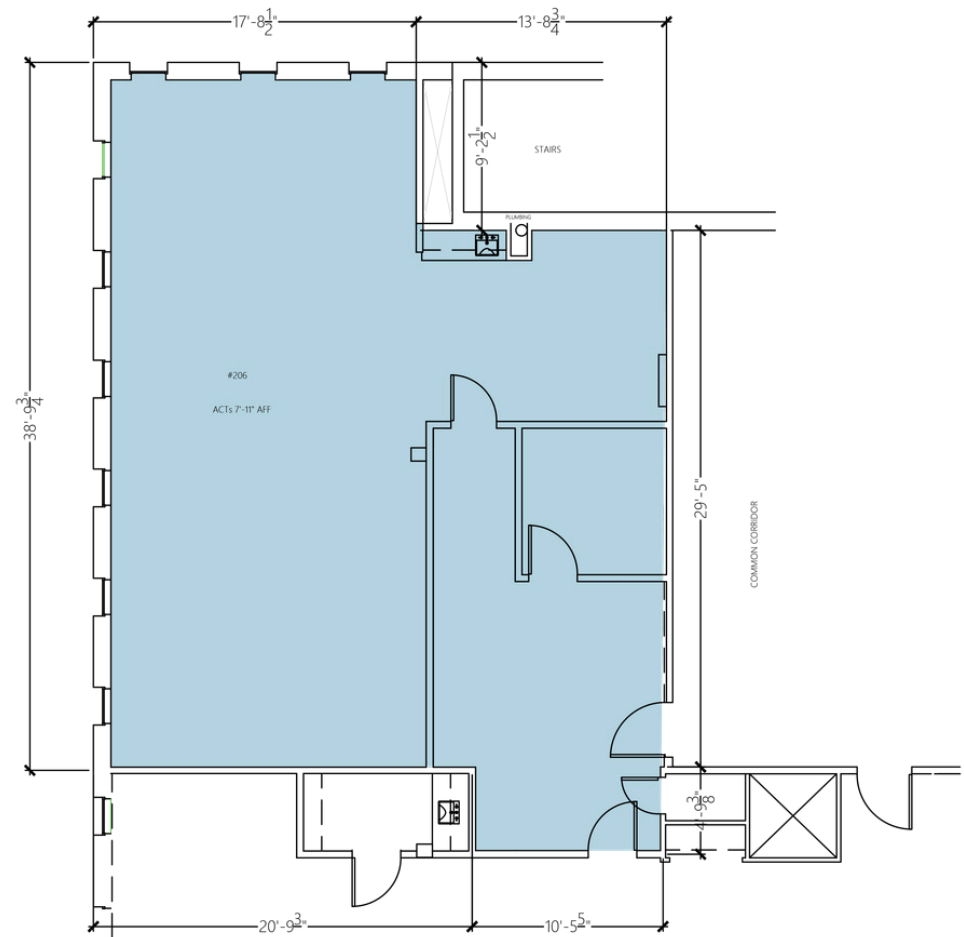


Availabilities

Size	1,142 SF
Unit Number	A02206B
Floor	2 nd Floor
Availability	Immediate
Ideal Use	Fitness, Open plan office
Additional Rent*	\$22.43 psf

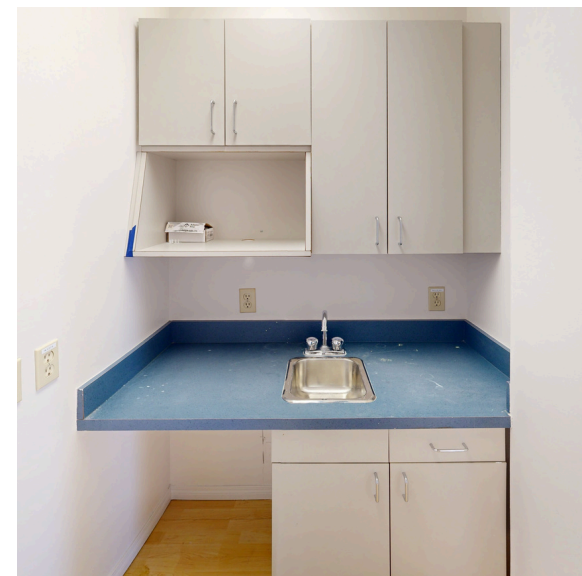
*2026 Estimates and rates are subject to change

 [Virtual Tour \(A02206B & A02207A\)](#)



Units - A02206B & A02207A

Interior Photos





Brent Watson
Leasing Manager
brent.watson@fcr.ca
[403.612.1654](tel:403.612.1654)