

# Fairmount Place

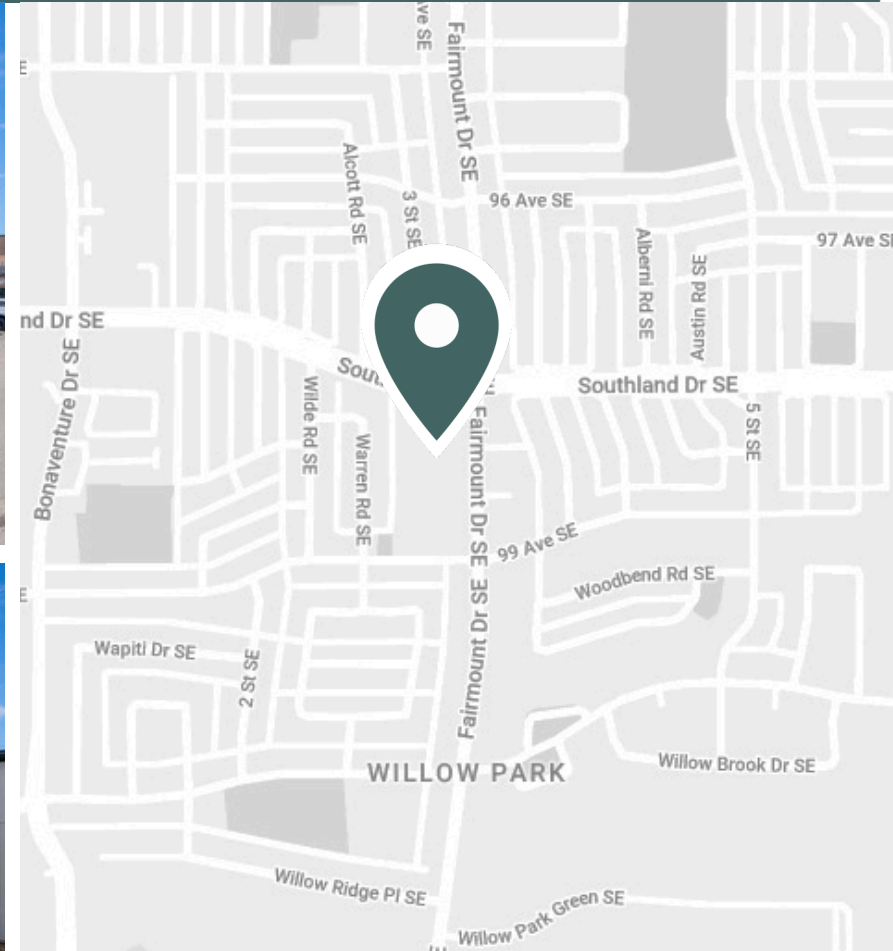
9919 Fairmount Drive South East, Calgary, AB





# Demographics & Neighbourhood

Located in the affluent community of Willow Park, Fairmount Place Shopping Centre is anchored by Calgary's largest Italian grocer, The Italian Centre Shop, as well as RBC and Tim Hortons. Drawing customers from across the city of Calgary, this centre is ideally situated in a densely populated and diverse neighbourhood providing for everyday needs and more. Fairmount Place Shopping Centre is surrounded by several parks and schools, is seconds away from the busy intersection of Macleod Trail SE and Southland Dr SE, and under 10 minutes to DeerFoot Trail.





# Neighbourhood Features



3-MINUTE DRIVE TO THE WILLOW  
PARK GOLF & COUNTRY CLUB



4-MINUTE DRIVE TO  
SOUTHCENTRE MALL



7-MINUTE DRIVE TO SUE  
HIGGINS PARK



Population (5km)  
142,000



Bike Score  
73



Household Income (5km)  
\$136,000



Traffic count  
26,000



Households (5km)  
58,000



Nearest Bus line  
10 City Hall/Southcentre - 0.1km



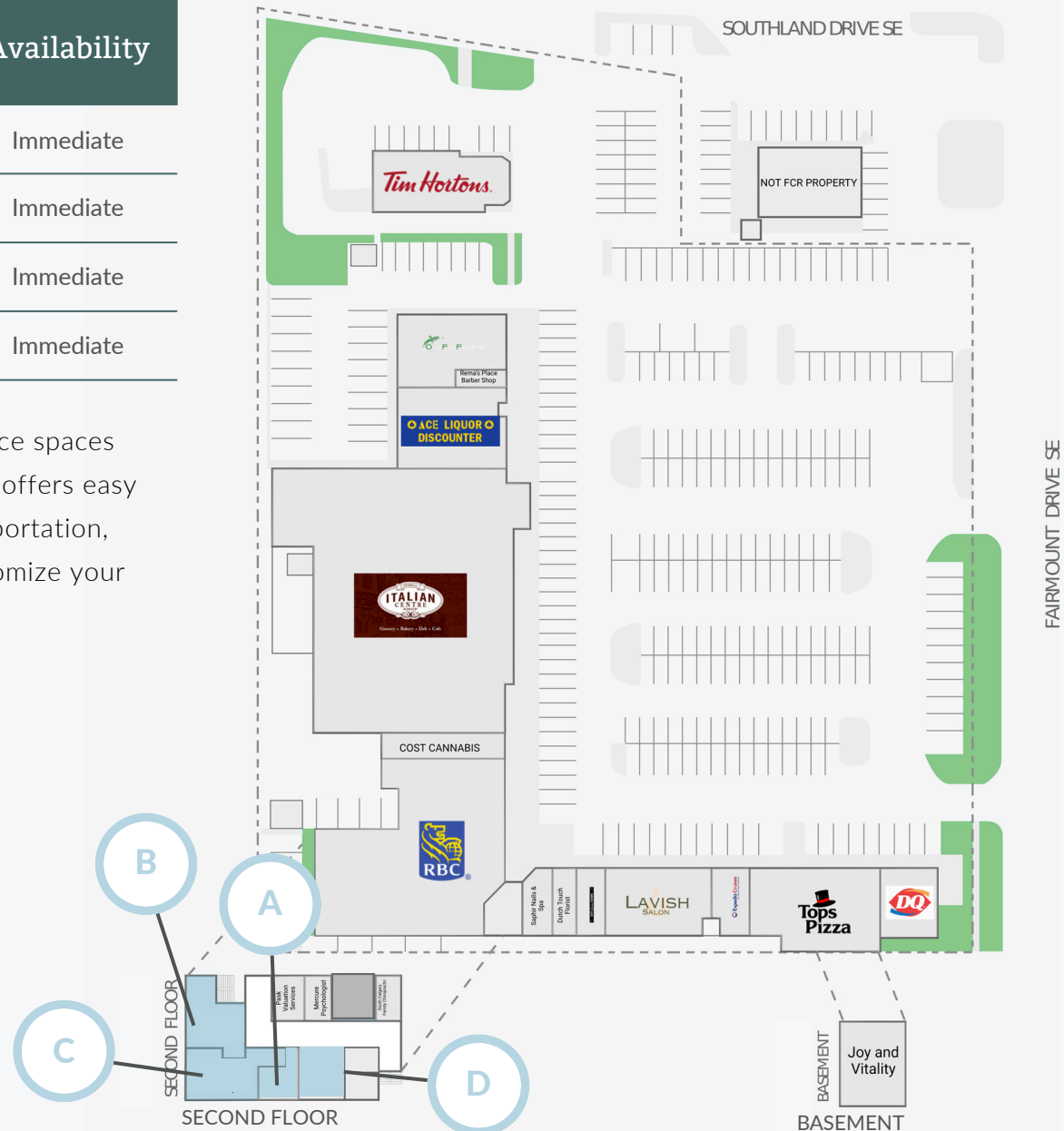
Nearest Rail line  
Southland CTrain Station - 1.2km



# Leasing Opportunities

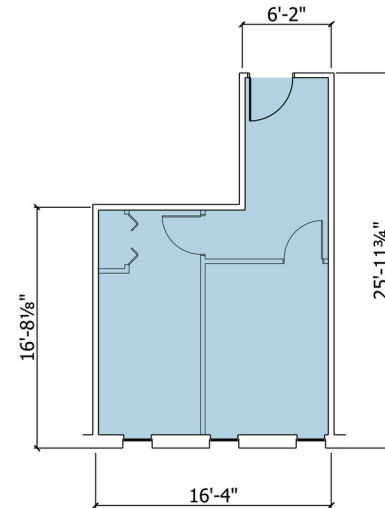
Unit	Unit Number	SF	Ideal Uses	Availability
A	A02203A	356	Office	Immediate
B	A02206B	1,142	Fitness/Open plan office	Immediate
C	A02207A	1,047	Fitness/Open plan office	Immediate
D	A02201A	1,084	Office	Immediate

Fairmount Place Shopping Centre currently offers four office spaces ranging in size from 356 sf to 1,142 sf. Our prime location offers easy access to major highways and is minutes from public transportation, making it convenient for both employees and clients. Customize your space to fit your unique business needs.

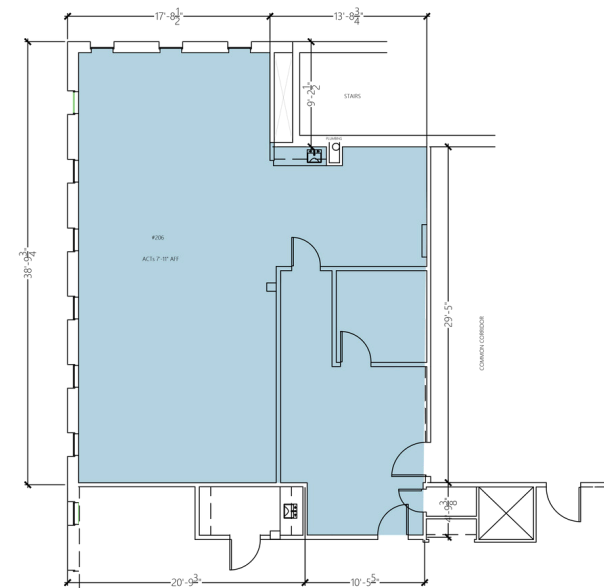


# Availabilities

Size	356 SF
Floor	2
Unit Number	A02203A
Additional Rent (psf)*	\$22.43
Available	Immediate
Additional Information	Office

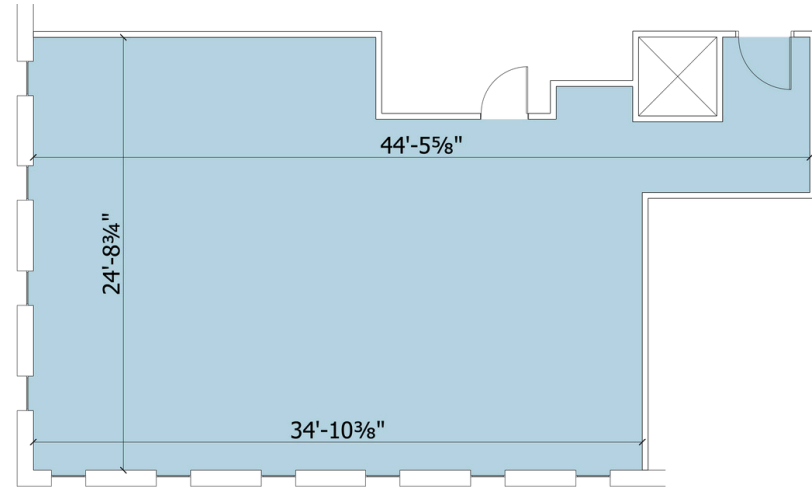


Size	1,142 SF
Floor	2
Unit Number	A02206B
Additional Rent (psf)*	\$22.43
Available	Immediate
Additional Information	Office

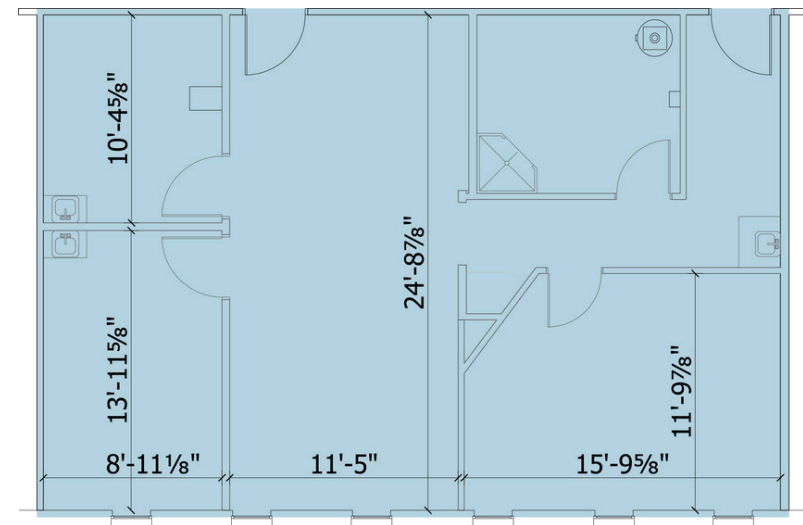


# Availabilities

Size	1,047 SF
Floor	2
Unit Number	A02207A
Additional Rent (psf)*	\$22.43
Available	Immediate
Additional Information	Office



Size	1,084 SF
Floor	2
Unit Number	A02201A
Additional Rent (psf)*	\$22.43
Available	Immediate
Additional Information	Office





**Brent Watson**  
Leasing Manager  
[brent.watson@fcr.ca](mailto:brent.watson@fcr.ca)  
[403.612.1654](tel:403.612.1654)