

LONGSTREET SHOPPING CENTRE



Longstreet Shopping Centre
Edmonton, AB

Senior Leasing Manager
Judee Orfino
judee.orfino@fcr.ca
780-224-4790

FCR Leasing
fcr.ca
leasing@fcr.ca
403.257.6888



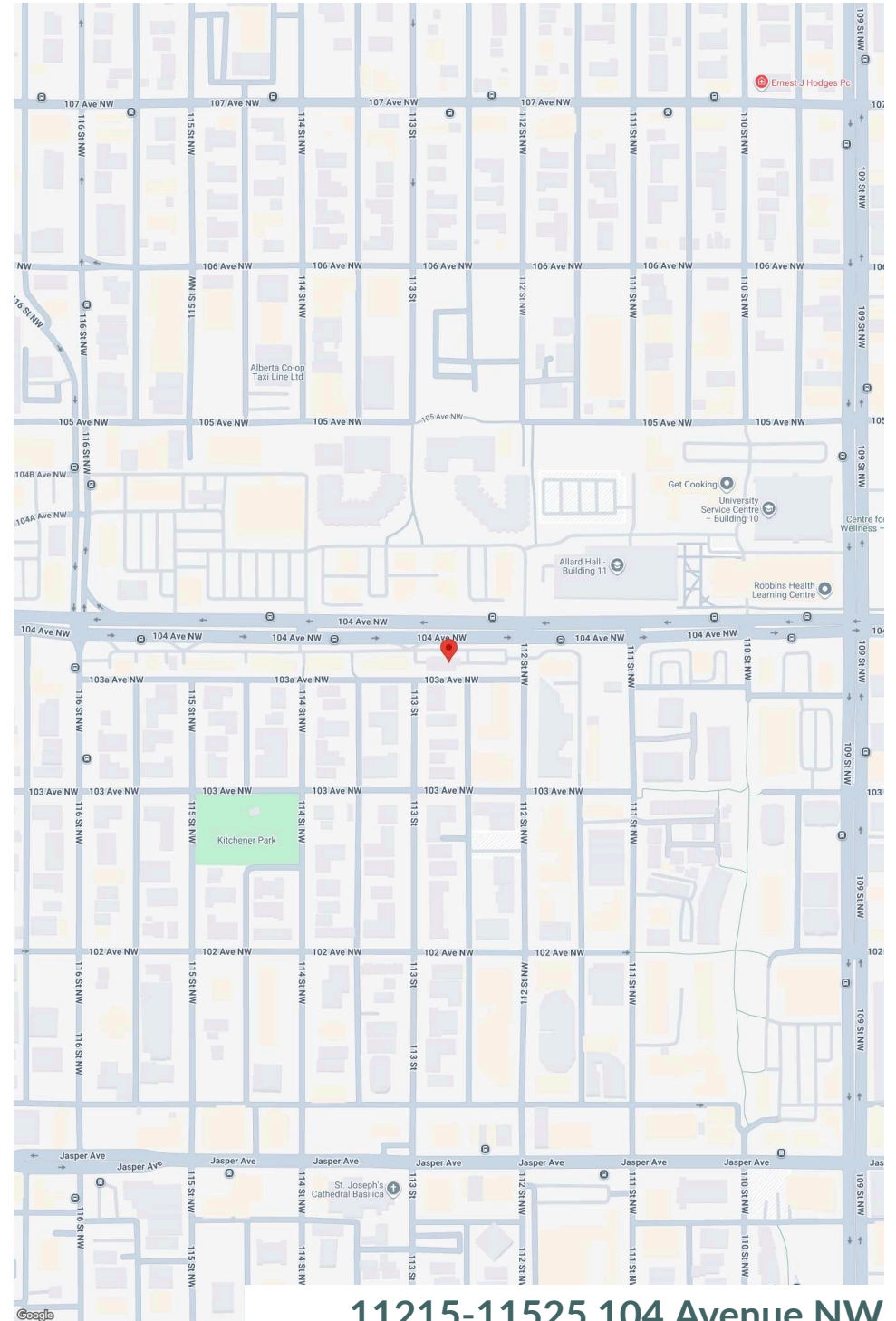
Longstreet Shopping Centre

Edmonton, AB

sf: 36,972

Longstreet Shopping Centre is centrally located in Edmonton, just steps from MacEwan University, which has over 20,000 students. Anchored by BMO, it features over 18 shops and services. Positioned along busy 104th Avenue NW, it's also just blocks from the vibrant Brewery District.

Availability: 1,914 sf



11215-11525 104 Avenue NW

Longstreet Shopping Centre

Demographics



Traffic Count

104th Ave NW / 116th St NW : 37,780



Walk Score

91



Transit Score

79



Household Income

	1km	3km	5km
Household Income	\$78,376	\$87,305	\$97,502



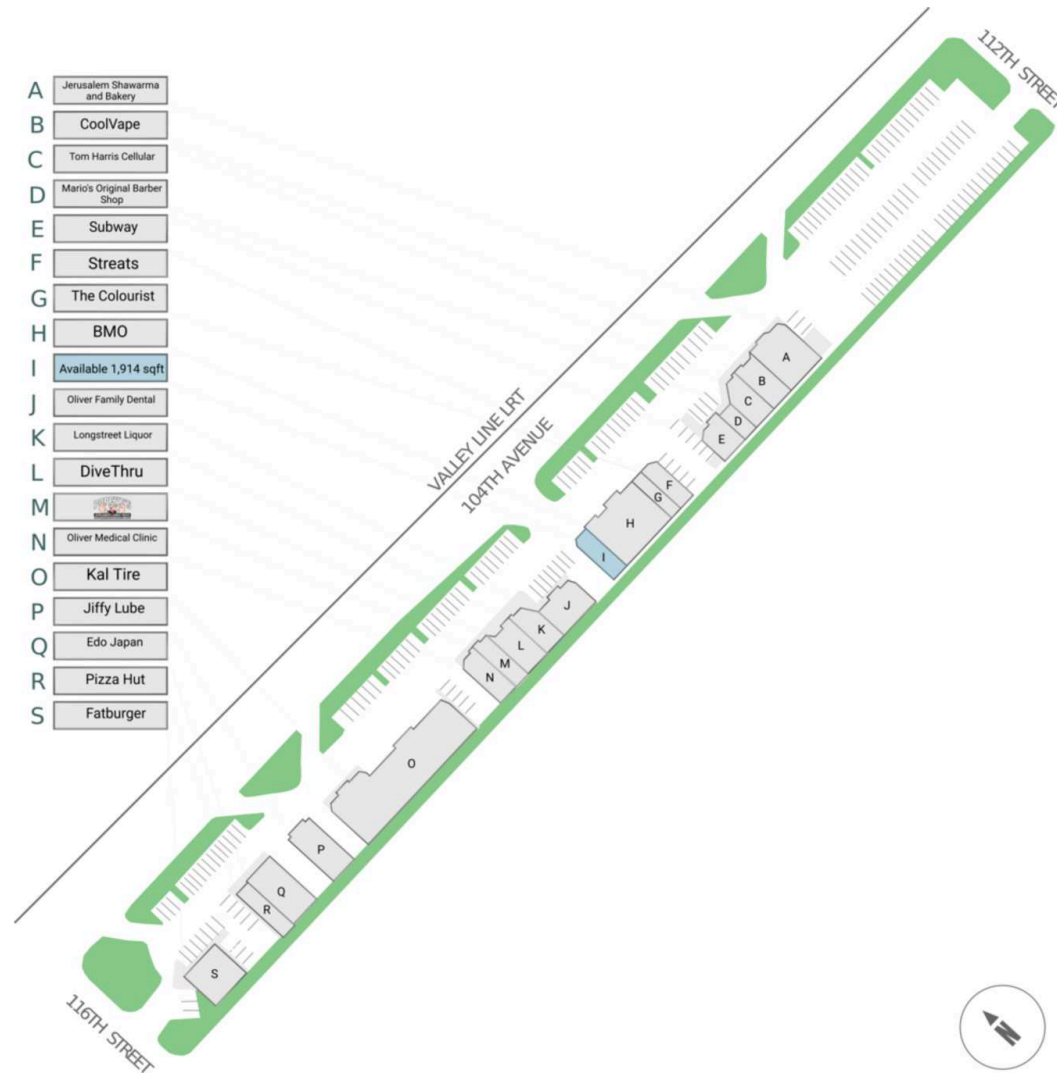
Households

Households	17,158	53,665	108,444
------------	--------	--------	---------



Population

Population	30,575	103,741	227,407
------------	--------	---------	---------



Current Tenants

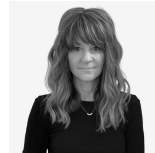
Fatburger
Pizza Hut
Edo Japan
Jiffy Lube
Kal Tire
Oliver Medical Clinic
Popeye's Supplements
DiveThru
Longstreet Liquor
Oliver Family Dental

Subway
Mario's Original Barber
Shop
Tom Harris Cellular
CoolVape
Jerusalem Shawarma and
Bakery
BMO
The Colourist
Streets

Current Availability

1,914 sf 21580-H01001A

Contact



Judee Orfino
Senior Leasing
Manager
judee.orfino@fcr.ca
780-224-4790

