

# 3080 Yonge Street

3080 Yonge Street  
Toronto, Ontario, M4N 3N1



## 3080 Yonge Street

---

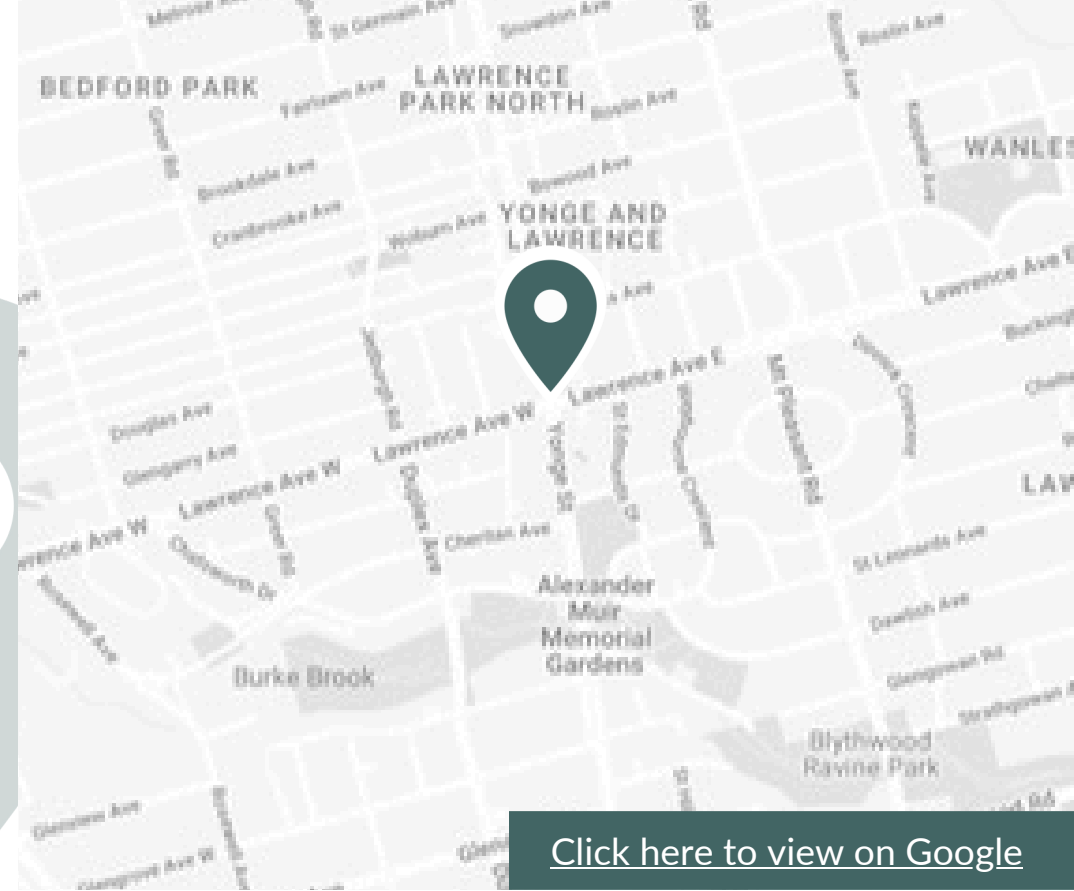
3080 Yonge Street is nestled in the heart of Bedford Park – one of Toronto’s most affluent and sought-after communities. Geared towards young families and professionals, this Uptown Toronto neighbourhood has a household income averaging \$240,000.

3080 Yonge Street is conveniently located at the busy intersection of Yonge Street and Lawrence Avenue. It offers direct access to TTC's Lawrence subway station, making it a prime location for commuters. The property is only a five-minute drive to HWY 401 and a 20-minute drive to Toronto's downtown core, ensuring easy accessibility for all.



# About the Location

Featuring modern aesthetics and urban flavour, this mixed-use property offers 2 levels of retail, and 4 levels of professional office space with **below-grade parking**. 3080 Yonge Street features FCR's public art installation, "Lighten Up" – 8 cast aluminum balloons with an eye-catching polished mirror finish. This outstanding property features excellent light exposure, with an open courtyard in the centre of the building as well as a rooftop garden and patio. With its many recent renovations and upgrades, 3080 Yonge is the perfect location for your new office.



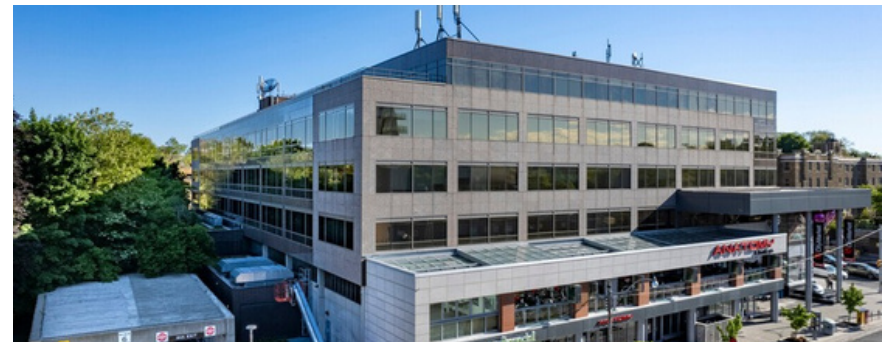
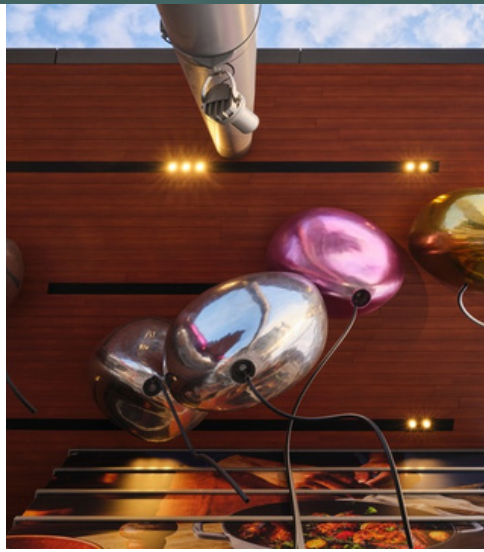
[Click here to view on Google](#)



# Demographics & Neighbourhood

3080 Yonge Street includes major tenants like Anatomy Fitness, Tim Hortons and Dollarama and is anchored by a **25,500 sf Loblaws City Market**, offering the convenience of a full-service grocery store, with a distinctive market-style layout appealing to the local urban demographic.

With a surrounding population of over **400,000 people in just a five-kilometre radius**, this property is part of a bustling and ever-growing community. In addition to the wide variety of amenities in close proximity, this property is located right next to **Yonge and Lawrence TTC subway station** (Averaging 25,000 daily passengers) providing easy access to 3080 Yonge from anywhere in the city.



# Neighborhood Features



1-MINUTE WALK TO YONGE AND LAWRENCE TTC SUBWAY STATION



5-MINUTE DRIVE TO HIGHWAY 401



20-MINUTE DRIVE TO DOWNTOWN CORE



Population (5km)  
413,053



Household Income (5km)  
\$209,323



Households (5km)  
179,732



Walk Score  
95



Transit Score  
81



Traffic count  
54,796 (ADDT)



Nearest Bus line  
Lawrence Ave at Yonge St - 50m



Nearest Rail line  
Lawrence Subway Station - 50m

## Nearby amenities and tenants



# Notable Locations

**metro**

**Scotiabank**

3080 Yonge Street



**Loblaws**

Lawrence Ave E



**tpl** toronto public library

Lawrence Park South

Glenview Senior Public School

Chatsworth Ravine Park

Yonge St

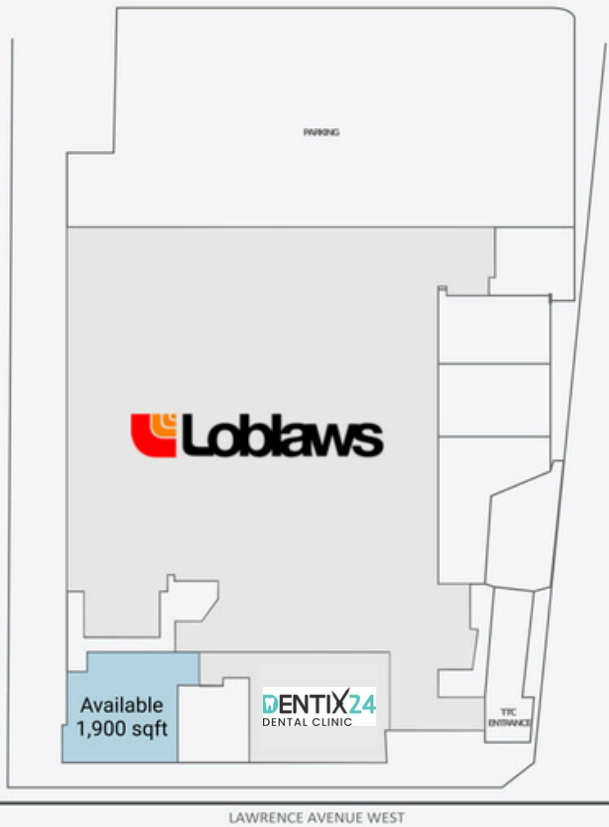


# Leasing Opportunities

Suite Number	Unit Number	Floor	SF	*Additional Rent (PSF)	Availability
H	A01002B	1	1,900	\$24.17	Immediately Available - Built out
5055	AO5021A	5	1,662	\$24.17	Immediately Available - Built out
5060	AO5022A	5	3,740	\$24.17	Immediately Available - Built out
5070	AO5027A	5	1,807	\$24.17	Immediately Available - Built out

# Site Plan

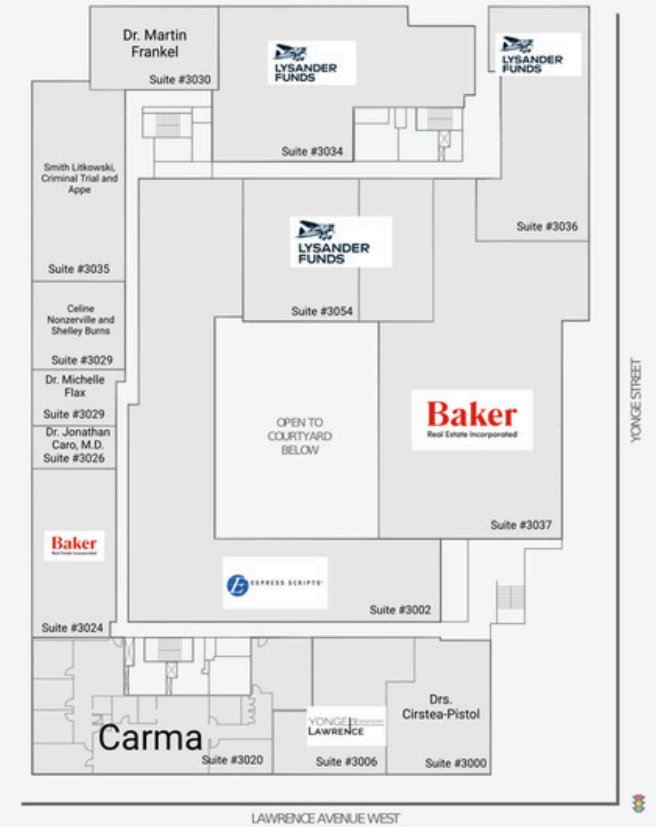
Ground Floor



Ground & Second Floor



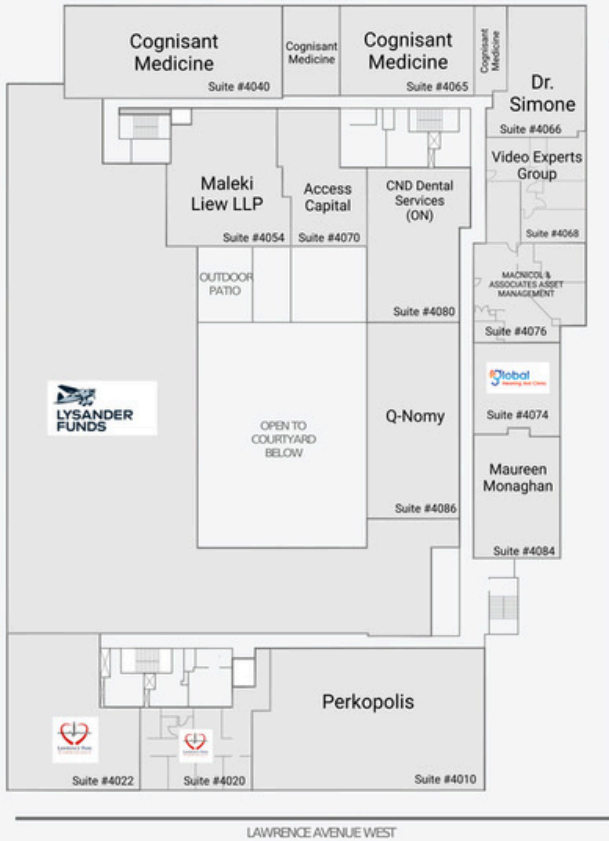
Third Floor



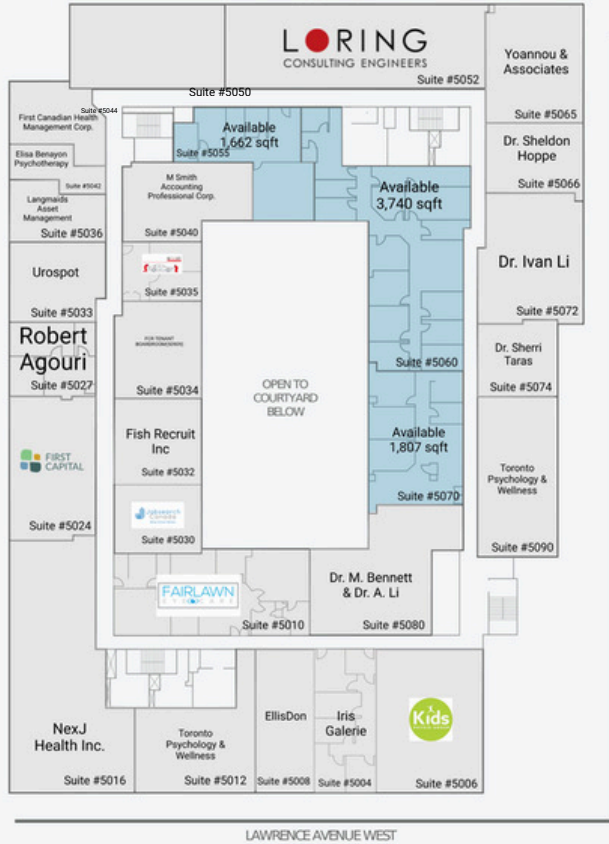


# Site Plan

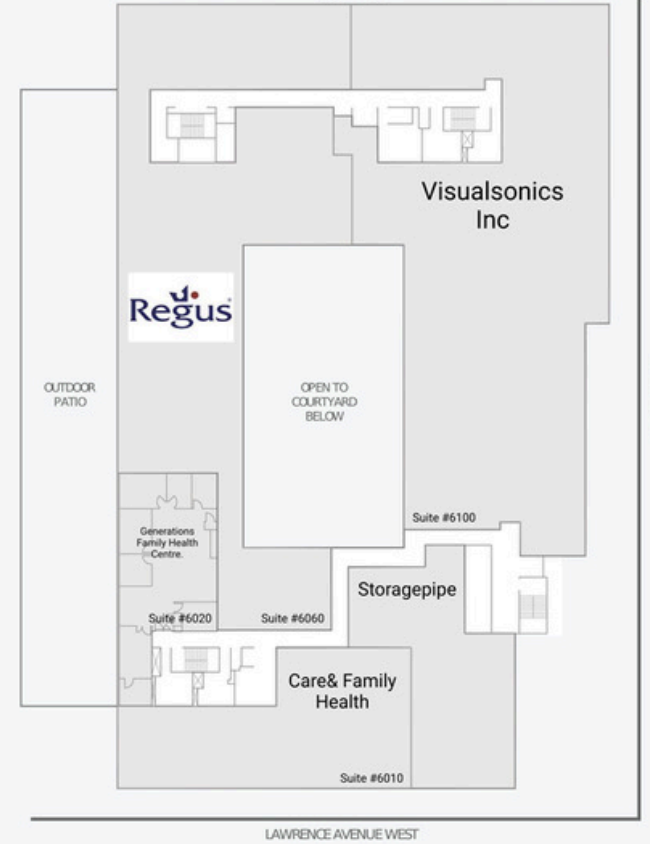
## Fourth Floor



## Fifth Floor

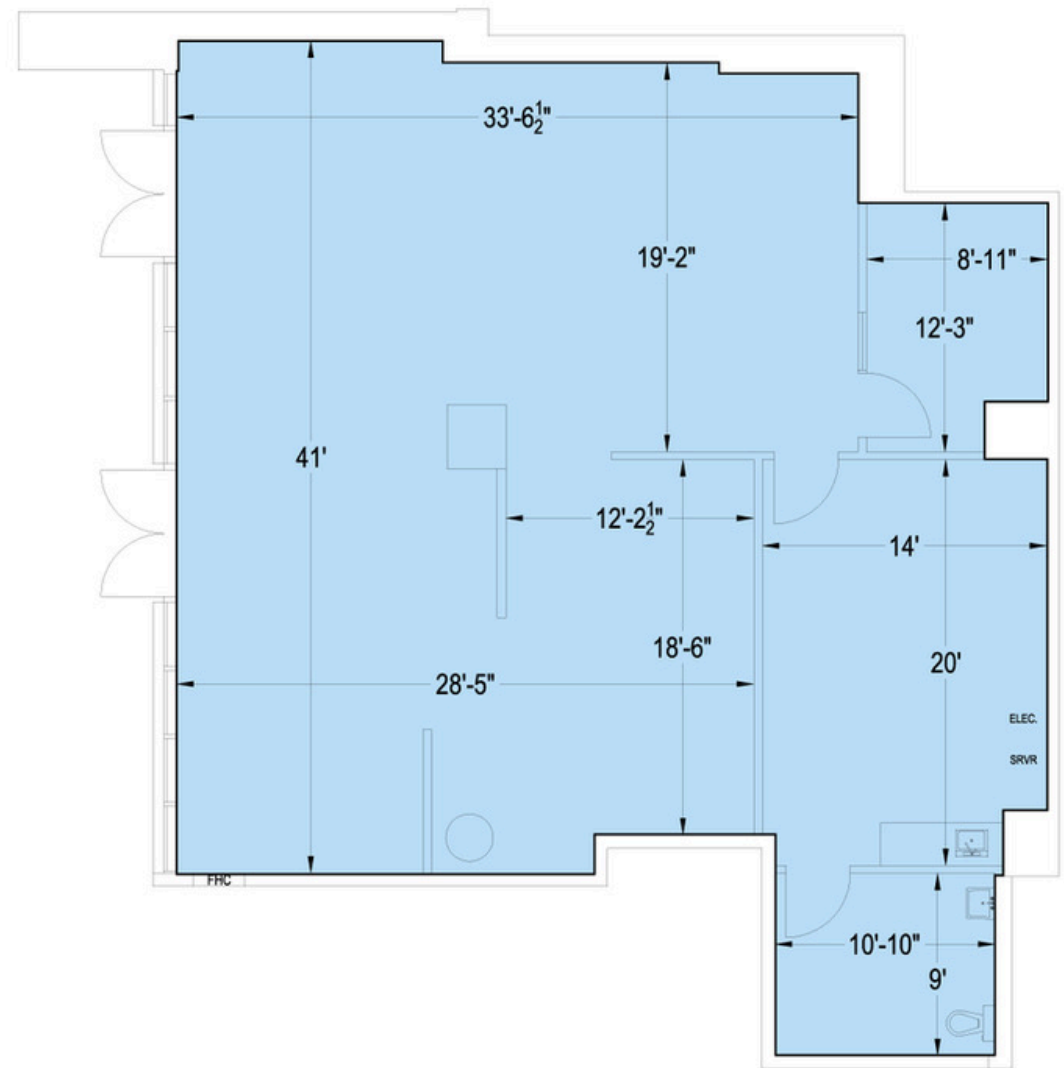


## Sixth Floor



# Suite H

<b>SF</b>	1,900 SF
<b>Floor</b>	1
<b>Unit Number</b>	A01002B
<b>Additional Rent (psf)*</b>	\$28.18
<b>Availability</b>	Immediately Available
<b>Additional Information</b>	Retail



**CAM (psf):** \$14.45  
**RTax (psf):** \$13.73

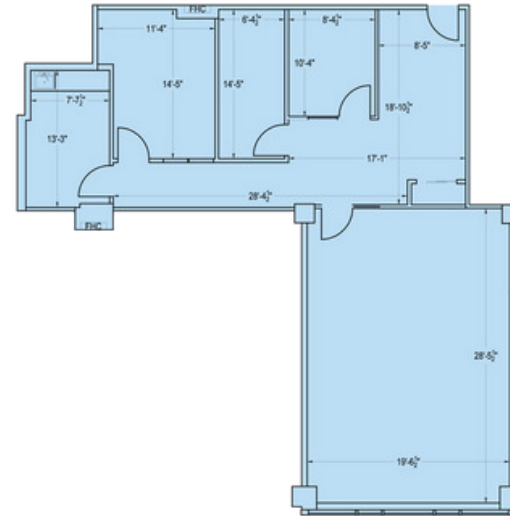
# Suite 5055 & 5060

<b>Suite</b>	5055
<b>SF</b>	1,662 SF
<b>Floor</b>	5
<b>Unit Number</b>	AO5021A
<b>Additional Rent (psf)*</b>	\$24.17
<b>Availability</b>	Immediately Available
<b>Additional Information</b>	Built out office

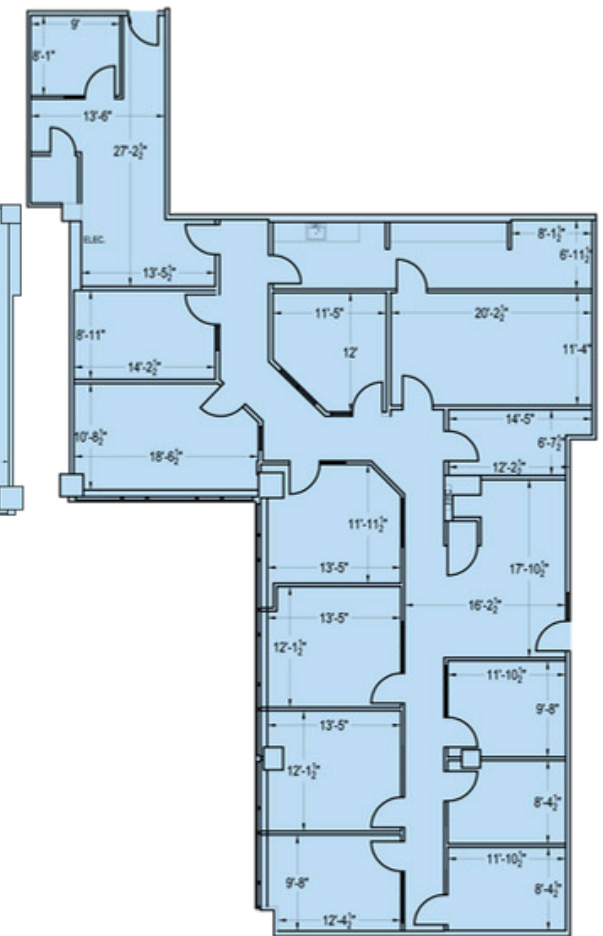
---

<b>Suite</b>	5060
<b>SF</b>	3,740 SF
<b>Floor</b>	5
<b>Unit Number</b>	AO5022A
<b>Additional Rent (psf)*</b>	\$24.17
<b>Availability</b>	Immediately Available
<b>Additional Information</b>	Built out office

**Suite 5055**

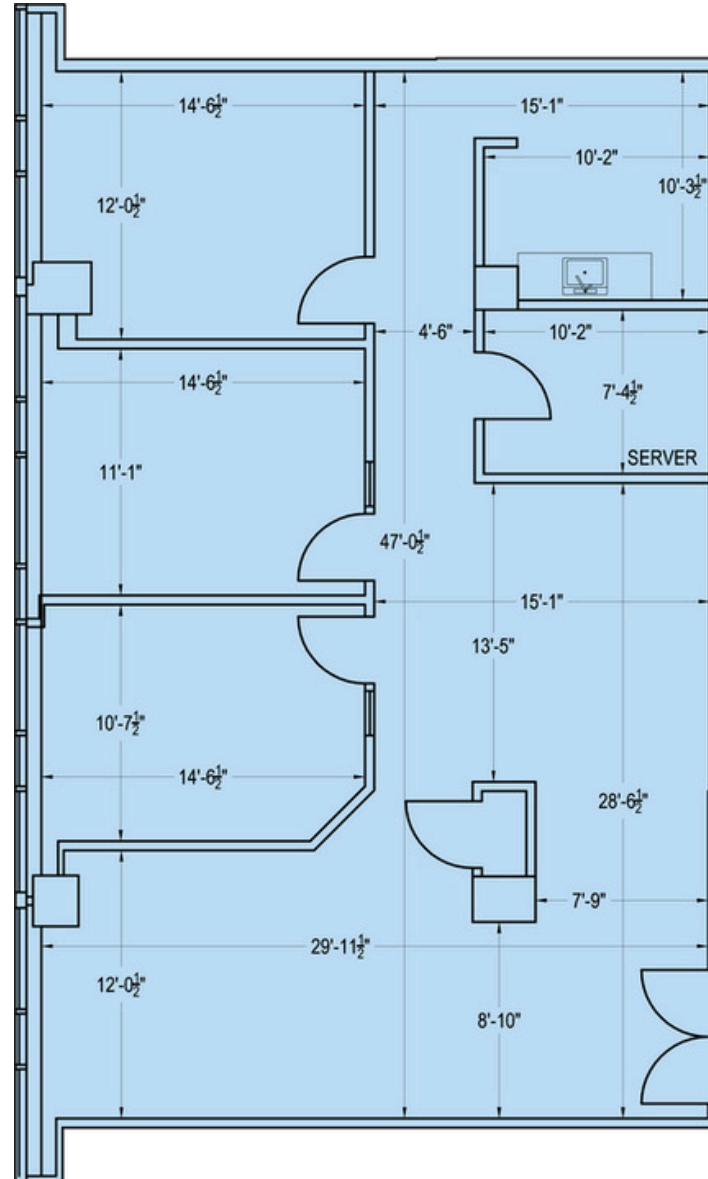


**Suite 5060**



# Suite 5070

<b>SF</b>	1,807 SF
<b>Floor</b>	5
<b>Unit Number</b>	AO5027A
<b>Additional Rent (psf)*</b>	\$24.17
<b>Availability</b>	Immediately Available
<b>Additional Information</b>	Built out office





**Sophie Dionne**  
Leasing Manager  
First Capital REIT  
[sophie.dionne@fcr.ca](mailto:sophie.dionne@fcr.ca)  
(647)-712-9768

**Daniel Baxa**  
Broker  
Intercity Realty Inc.  
[daniel@intercityrealty.com](mailto:daniel@intercityrealty.com)  
(416)-899-6515

**Lou Grossi**  
Broker of Record  
Intercity Realty Inc.  
[lougrossi@intercityrealty.com](mailto:lougrossi@intercityrealty.com)  
(416)-732-5733