

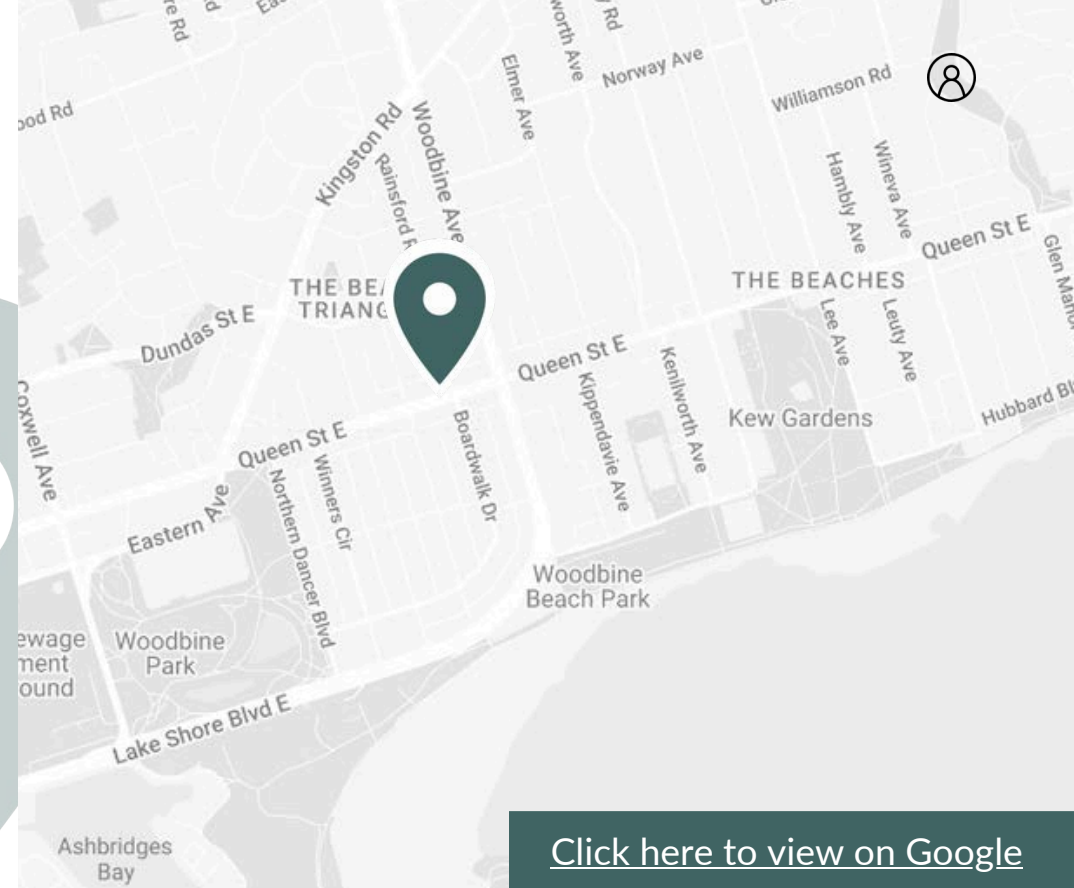
1842-1852 Queen Street East

Toronto, ON M4L 1H1



About the Location

Just 20 minutes from the downtown Toronto core, on the bustling thoroughfare of Queen Street, is the charming 1842-1852 Queen Street East. This boutique 3-storey building is anchored by CIBC, serving the surrounding Beaches neighbourhood. This vibrant community is home to Toronto's most eclectic and unique shops and cafes, preserving a small-town vibe just a short walk to the lake.



[Click here to view on Google](#)



Neighborhood Features



5-MINUTE WALK TO
WOODBINE PARK (350 M)



13-MINUTE WALK TO WOODBINE
BEACH (650 M)



15-MINUTE DRIVE TO DON
VALLEY PARKWAY (7.5KM)



Nearest Bus line
Hambly Ave at Queen St East North Side (900 m)



Nearest Rail line
Queen St East at Sarah Ashbridge Ave (160 m)



Population (5km)
314,009



Household Income (5km)
\$122,406



Households (5km)
131,316



Bike Score
94



Walk Score
95



Transit Score
73

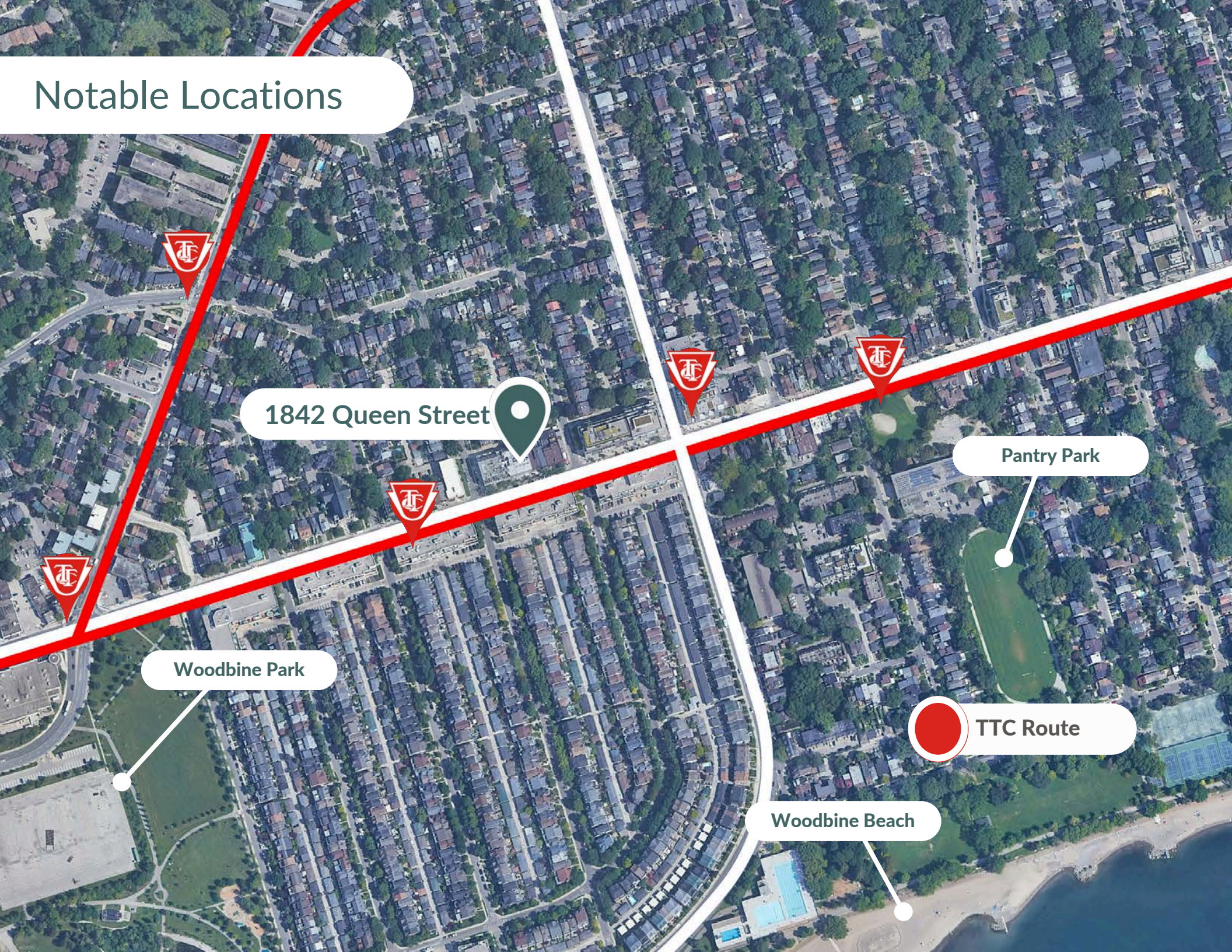


Traffic count
27,934

Nearby amenities and tenants



Notable Locations



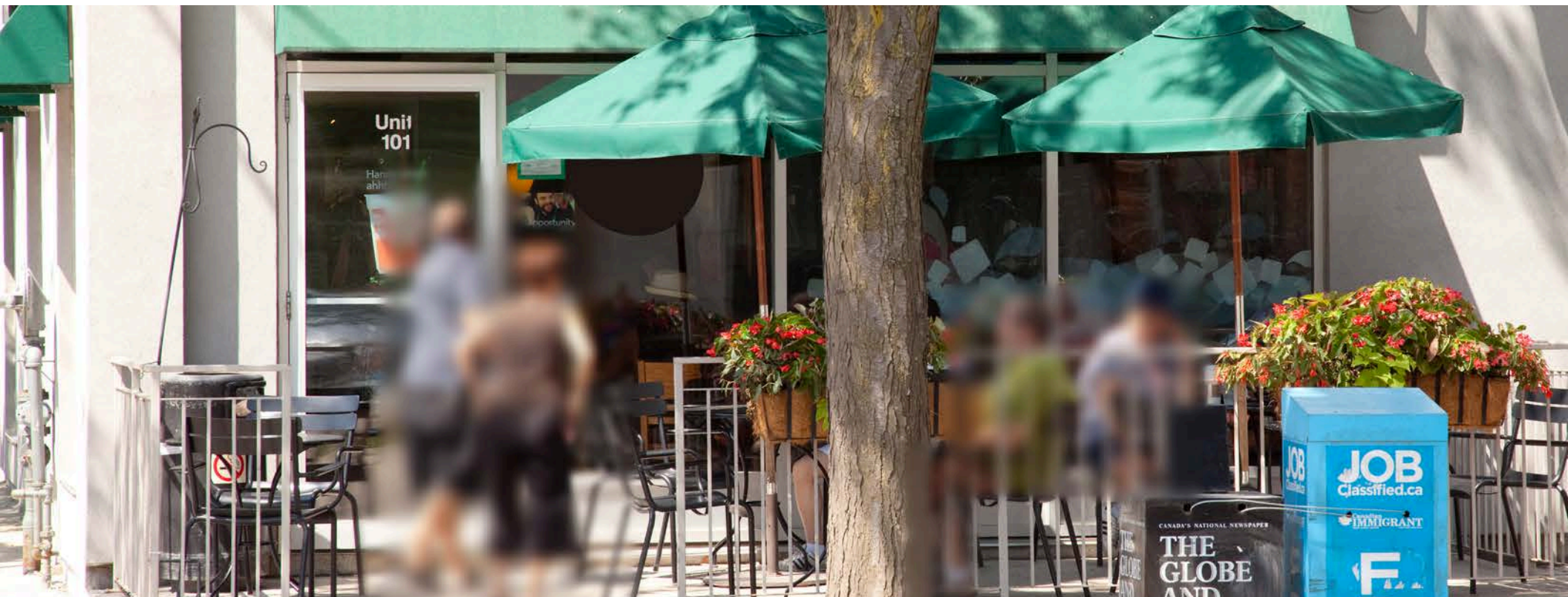
1842 Queen Street

Woodbine Park

Pantry Park

TTC Route

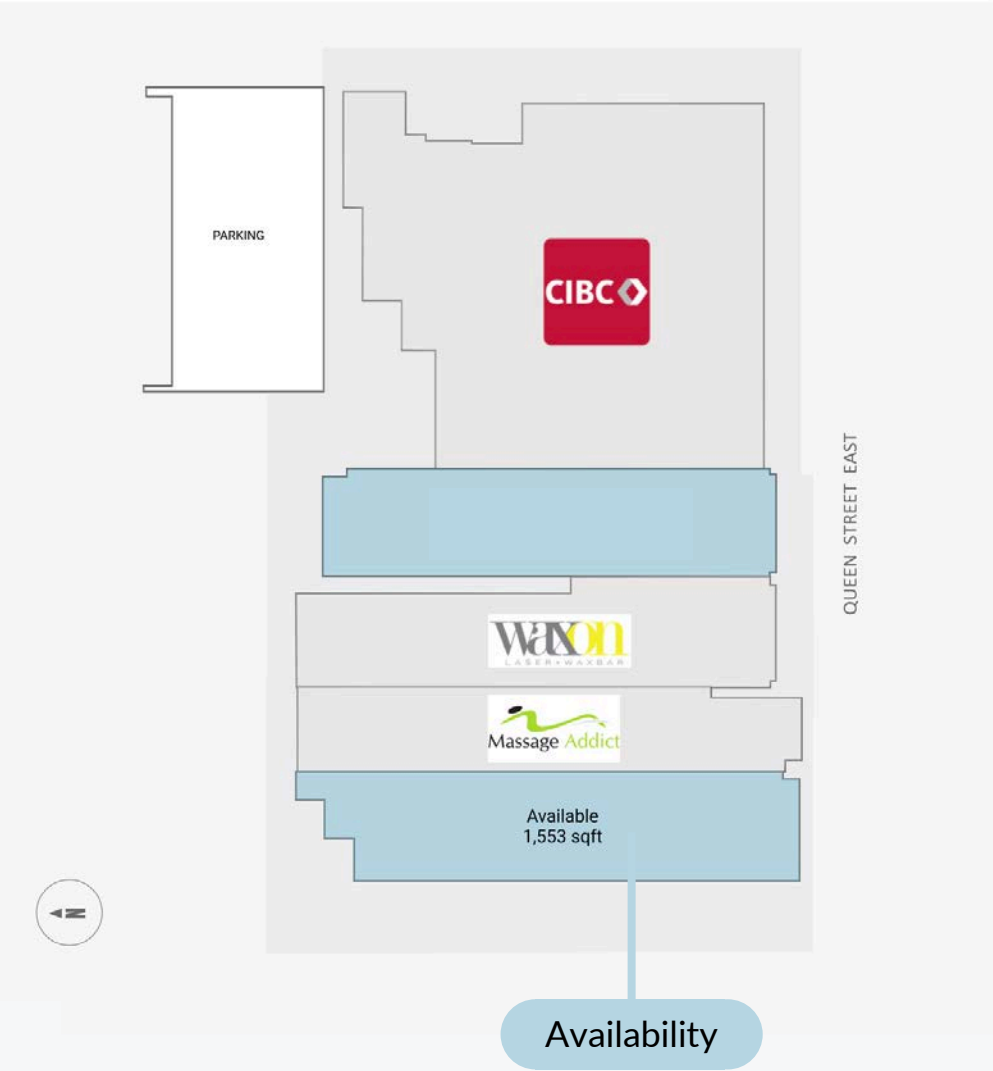
Woodbine Beach



Leasing Opportunities

Size	1,553 SF
Available	Immediately
Ideal Uses	Coffee shop, QSR
Additional Rent*	\$28.60

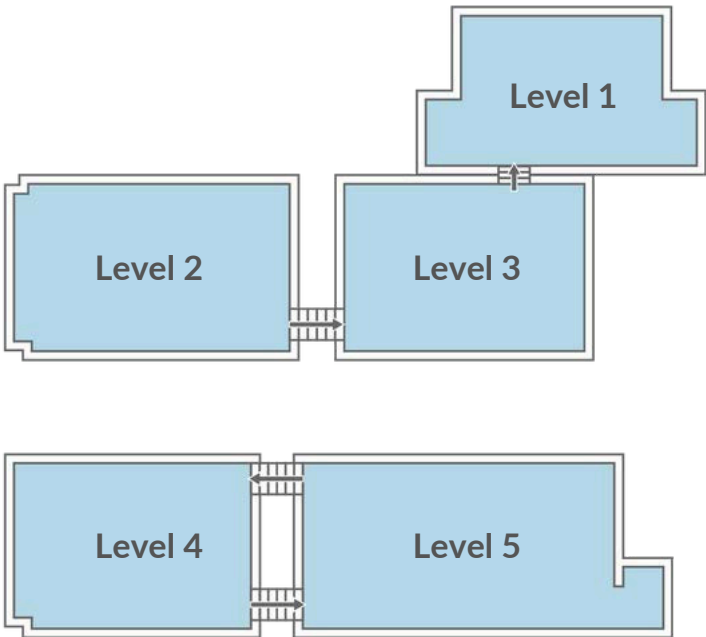
**this is an approximate and rates are subject to change.*

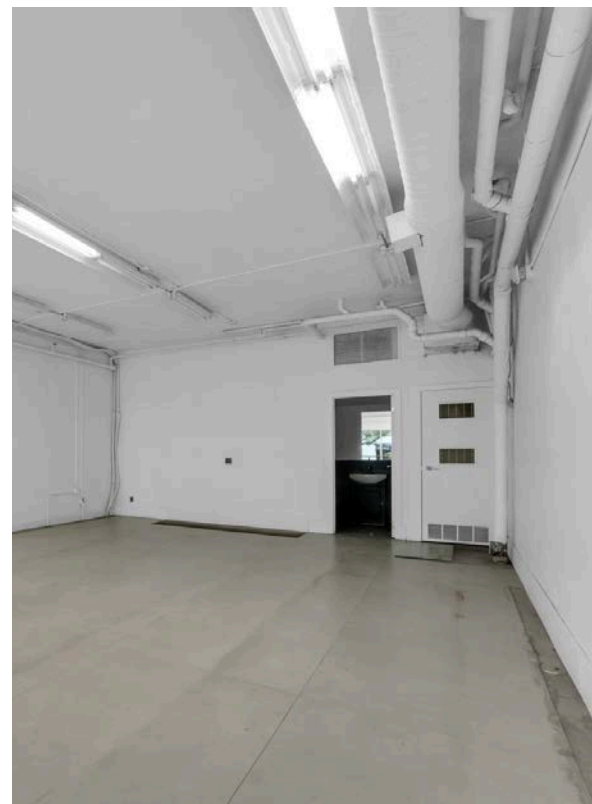
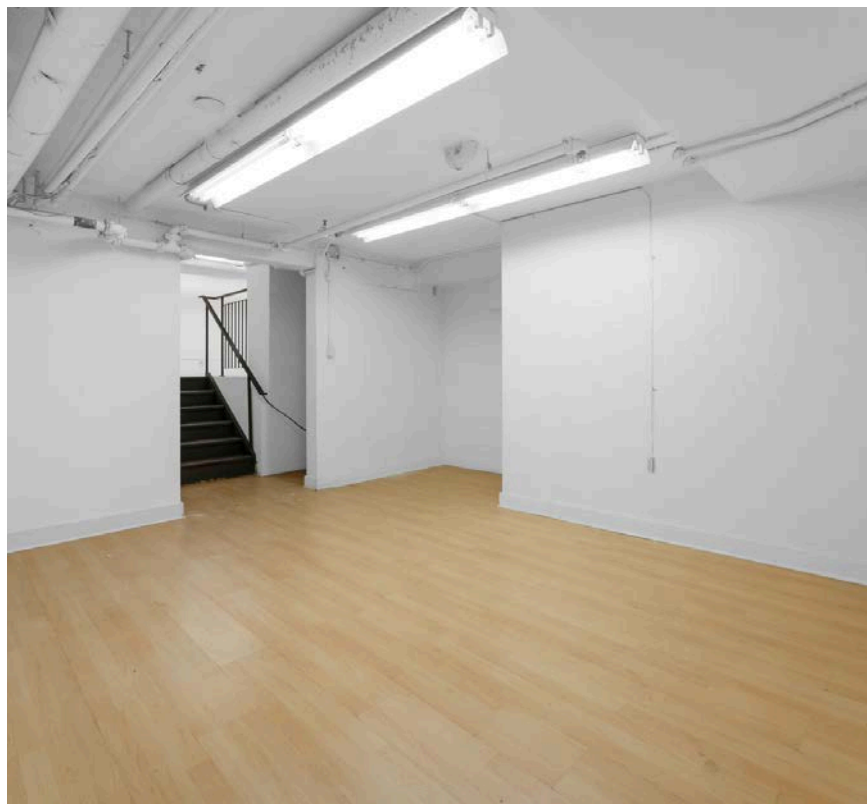


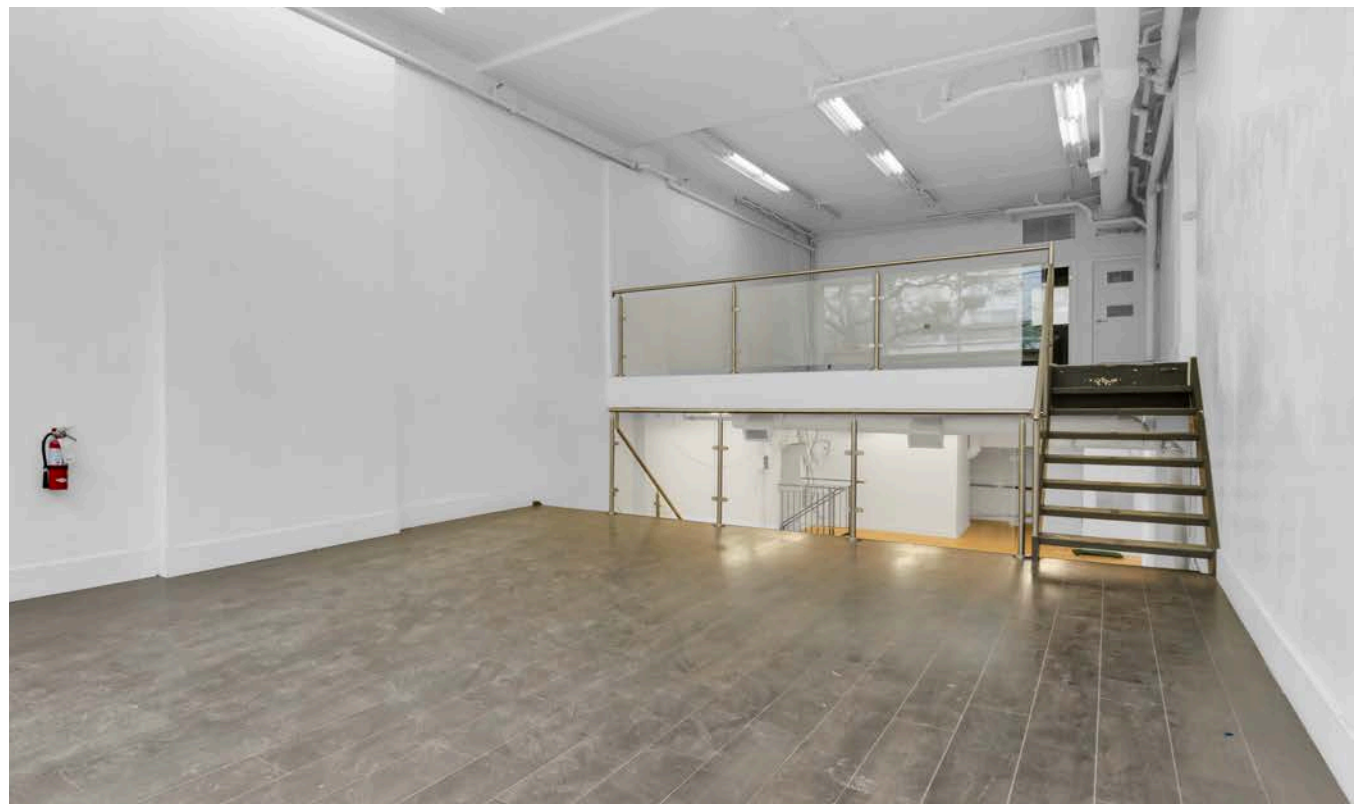
Leasing Opportunities

Size	3,150 SF
Available	Immediately
Ideal Uses	Retail
Additional Rent*	\$28.60

**this is an approximate and rates are subject to change.*









Jon Gauntlett
Senior Leasing Manager
jon.gauntlett@fcr.ca
[416.481.3584](tel:416.481.3584)