

Meadowlark Health & Shopping Centre

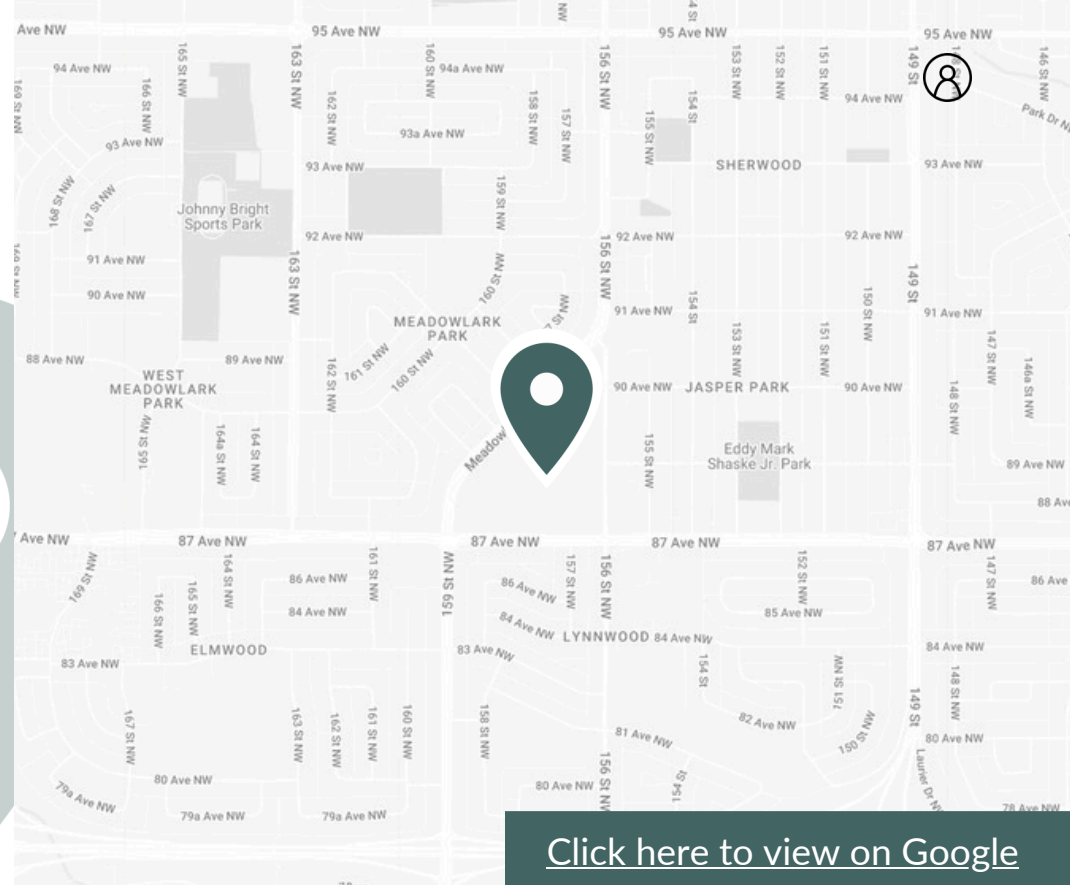
8713 156 St NW, Edmonton, AB



2,823 sf Space Available

About the Location

Meadowlark Health and Shopping Centre is an established 304,700 sf shopping destination conveniently located at Meadowlark Road NW and 87 Ave NW. Offering more than 45 retail shops and services, this enclosed shopping center is anchored by a 70,900 sf Walmart and a 39,800 sf Safeway and features a variety of other retailers, restaurants, and health services to meet the needs of the surrounding communities.



[Click here to view on Google](#)



Neighborhood Features



3-MINUTE DRIVE TO
MEADOWLARK PARK (800M)



4-MINUTE DRIVE TO ELMWOOD
COMMUNITY CENTRE (1.4KM)



5-MINUTE DRIVE TO JASPER PLACE
HIGH SCHOOL (1.6KM)



Nearest Bus line
Meadowlark Road & 87 Avenue (on-site)



Nearest Rail line
Health Sciences/Jubilee light rail station (7km)



Population (5km)
152,435



Household Income (5km)
\$129,706



Households (5km)
59,849



Bike Score
79



Walk Score
93



Transit Score
74

Near by amenities and tenants



Notable Locations

Jasper Place High School

École Notre-Dame

James Gibbons YMCA

Meadowlark Shopping Centre

87 Avenue NW

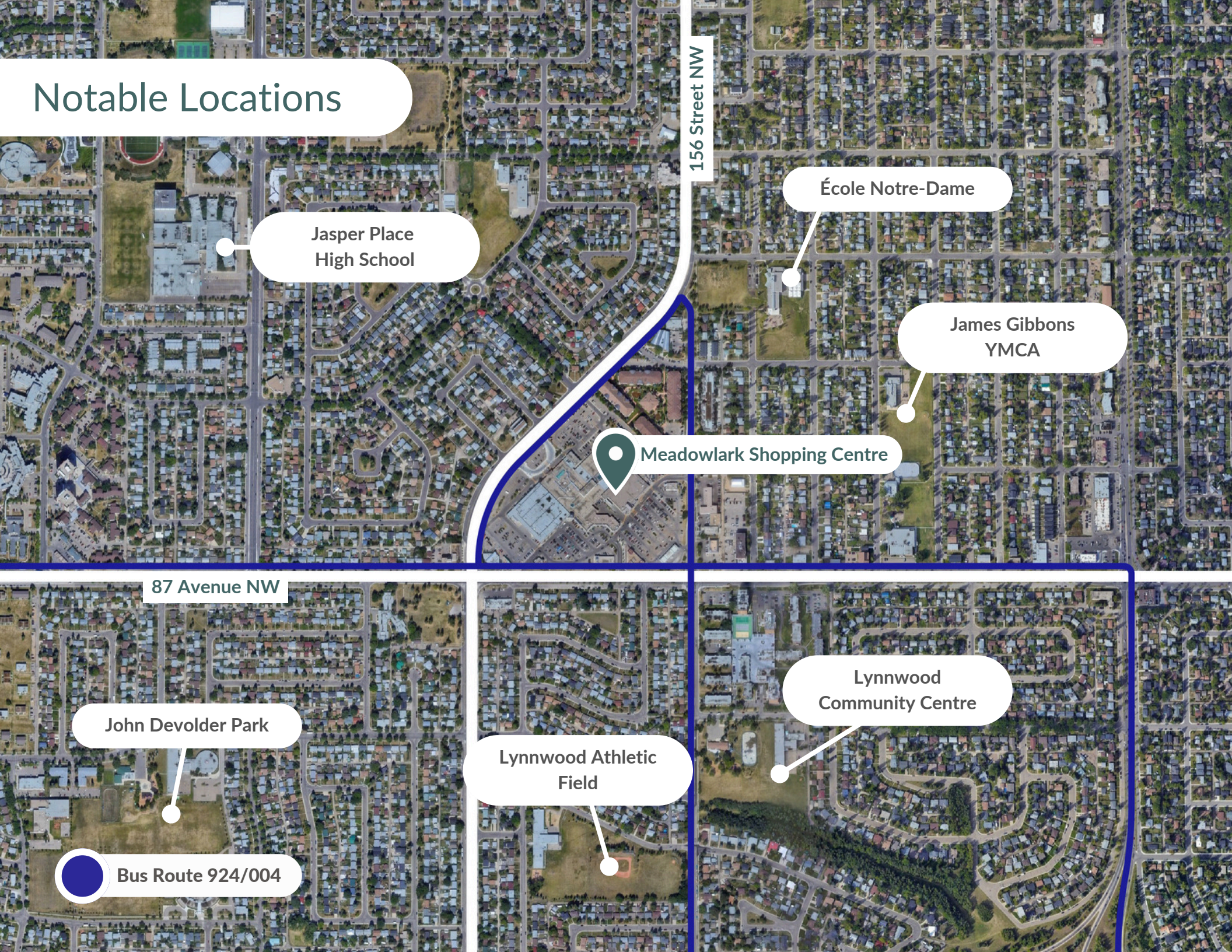
John Devolder Park

Bus Route 924/004

Lynnwood Athletic Field

Lynnwood Community Centre

156 Street NW



Site Plan





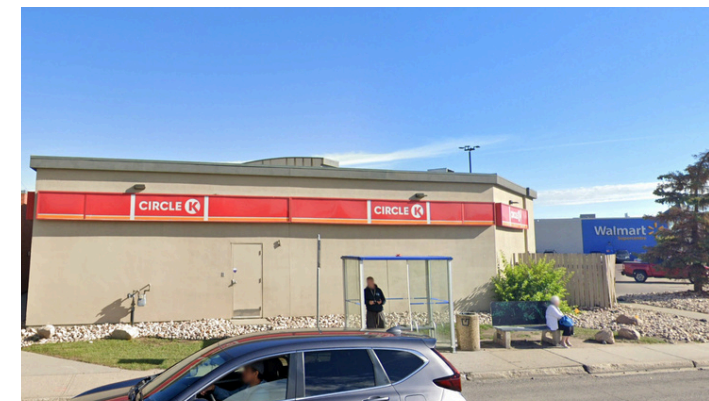
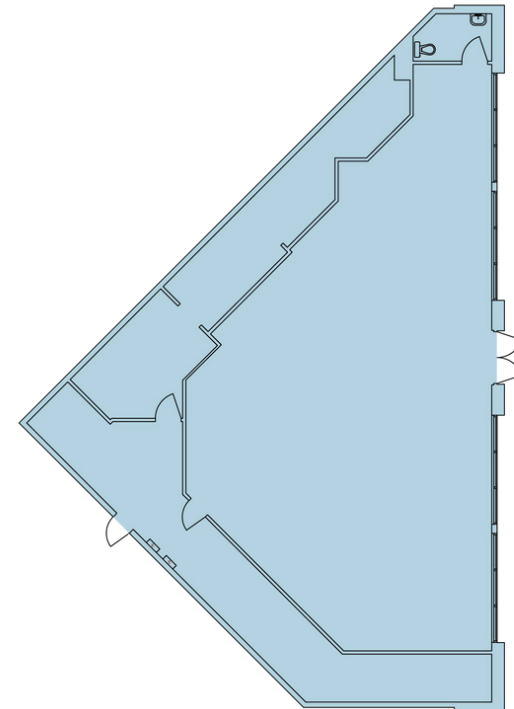
2,823 SF

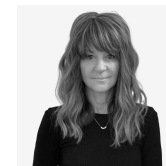
8713 156 St NW, Edmonton, AB

Size	2,823 SF
Available	Immediately
Unit Number	400
Ideal Use	QSR, Hair, Pet, Cannabis
Additional Rent	\$19.77
Notes	Opportunity to demise

**this is an approximate and rates are subject to change.*

In addition to being located right next to the shopping centres parking lot entrance, this space features excellent visibility from 87 Avenue NW along with prominent pylon signage, ensuring plenty of exposure and foot traffic driven towards this space.





Judee Orfino
Leasing Manager
judee.orfino@fcr.ca
780-224-4790