

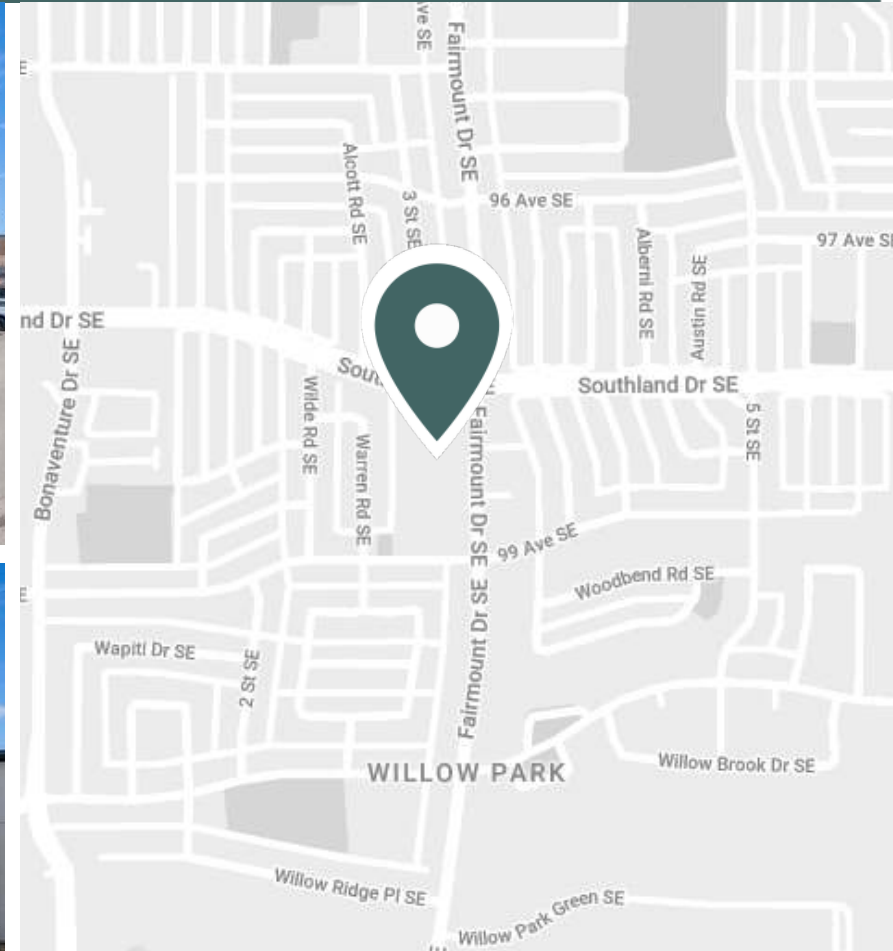
Fairmount Place

9919 Fairmount Drive South East, Calgary, AB



Demographics & Neighbourhood

Located in the affluent community of Willow Park, Fairmount Place Shopping Centre is anchored by Calgary's largest Italian grocer, The Italian Centre Shop, as well as RBC and Tim Hortons. Drawing customers from across the city of Calgary, this centre is ideally situated in a densely populated and diverse neighbourhood providing for everyday needs and more. Fairmount Place Shopping Centre is surrounded by several parks and schools, is seconds away from the busy intersection of Macleod Trail SE and Southland Dr SE, and under 10 minutes to DeerFoot Trail.



Neighbourhood Features



3-MINUTE DRIVE TO THE WILLOW PARK GOLF & COUNTRY CLUB



4-MINUTE DRIVE TO SOUTHCENTRE MALL



7-MINUTE DRIVE TO SUE HIGGINS PARK



Population (5km)
142,454



Bike Score
73



Household Income (5km)
\$136,321



Traffic count
26,000



Households (5km)
57,565



Nearest Bus line
10 City Hall/Southcentre - 0.1km



Nearest Rail line
Southland CTrain Station - 1.2km



Leasing Opportunities

Unit	Unit Number	SF	Ideal Uses	Availability
A	A02203A	356	Office	July 2025
B	A02206B	1,142	Fitness/Open plan office	Immediate
C	A02207A	1,047	Fitness/Open plan office	Immediate
D	A02201A	1,084	Office	Immediate
A-D		3,629	Fitness/Open plan office	Immediate

Fairmount Place Shopping Centre currently offers four office spaces ranging in size from 356 sf to 3,629 sf. Our prime location offers easy access to major highways and is minutes from public transportation, making it convenient for both employees and clients. Customize your space to fit your unique business needs.

Main Floor & Basement:*

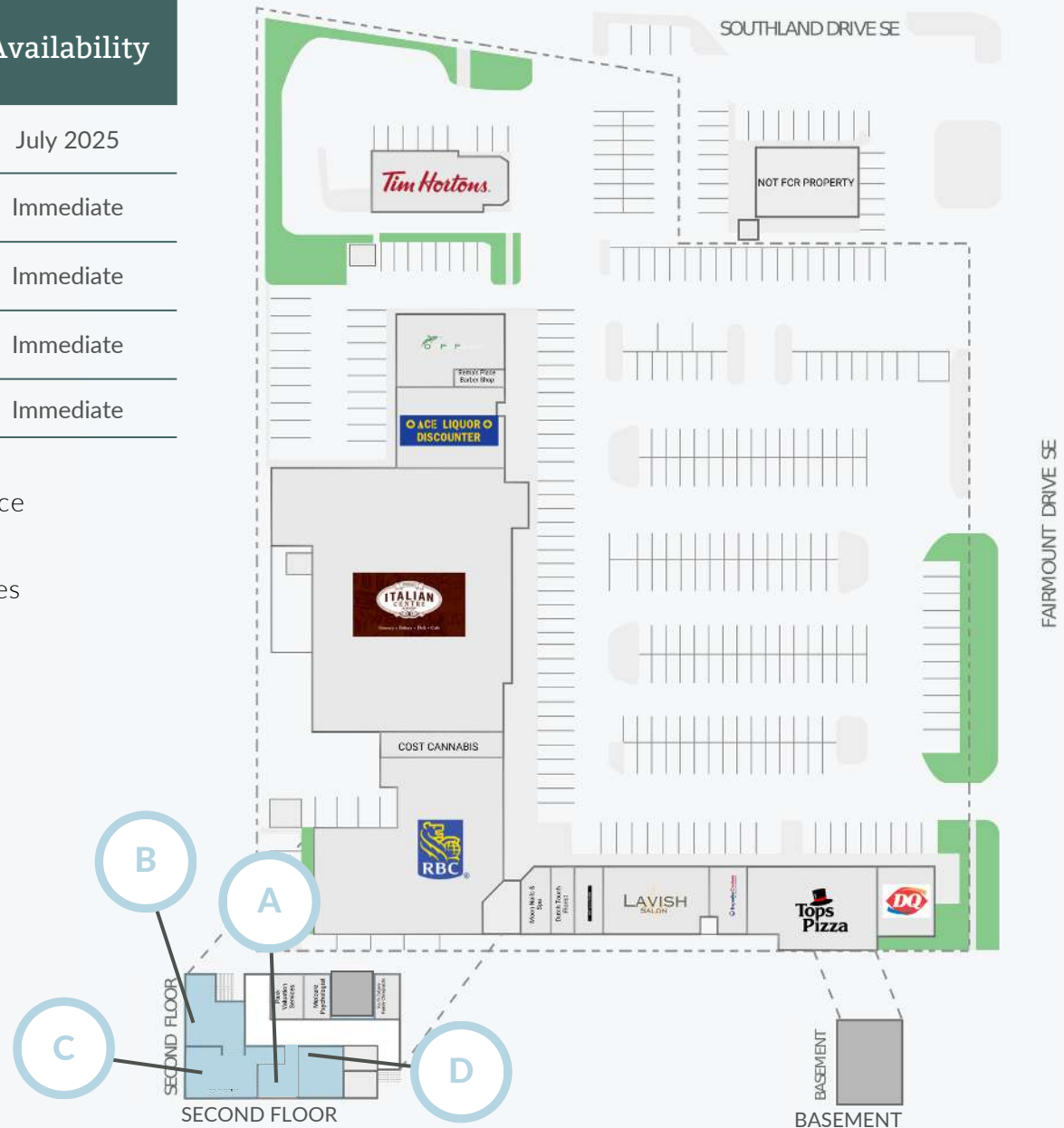
CAM: \$6.54

Tax: \$9.87

Second Floor:*

CAM: \$14.30

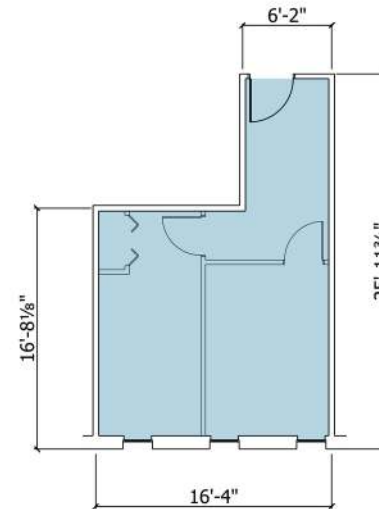
Tax: \$9.77



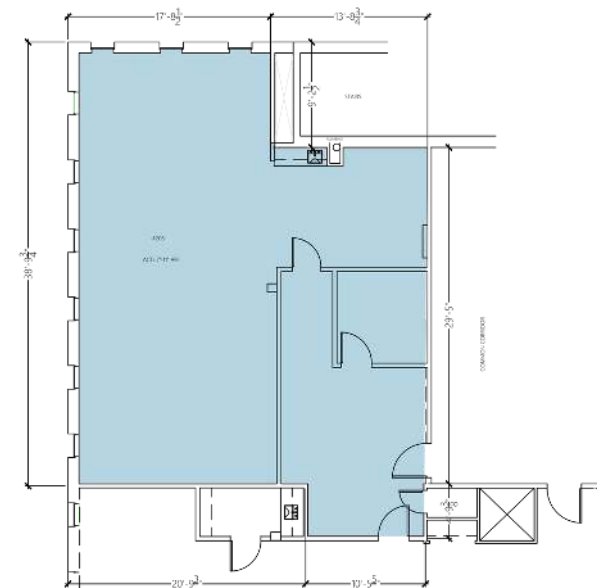
*2024 estimates

Availabilities

Size	356 SF
Floor	2
Unit Number	A02203A
Additional Rent (psf)*	\$24.07
Available	July 2025
Additional Information	Office

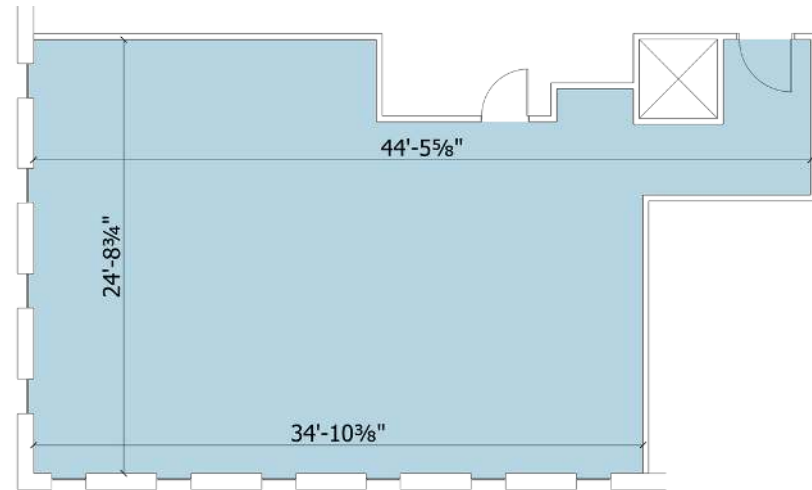


Size	1,142 SF
Floor	2
Unit Number	A02206B
Additional Rent (psf)*	\$24.07
Available	Immediate
Additional Information	Office

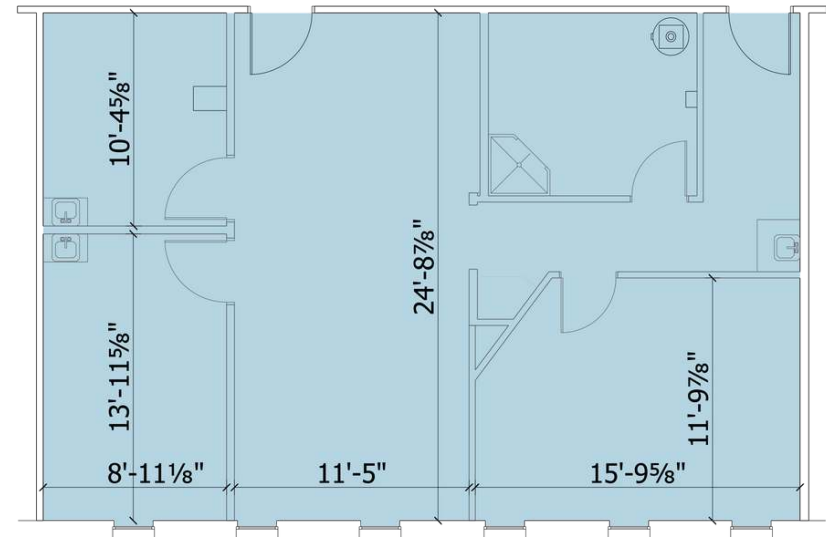


Availabilities

Size	1,047 SF
Floor	2
Unit Number	A02207A
Additional Rent (psf)*	\$24.07
Available	Immediate
Additional Information	Office



Size	1,084 SF
Floor	2
Unit Number	A02201A
Additional Rent (psf)*	\$24.07
Available	Immediate
Additional Information	Office





Brent Watson
Leasing Representative
brent.watson@fcr.ca
[403.612.1654](tel:403.612.1654)