

# 1842-1852 Queen Street East

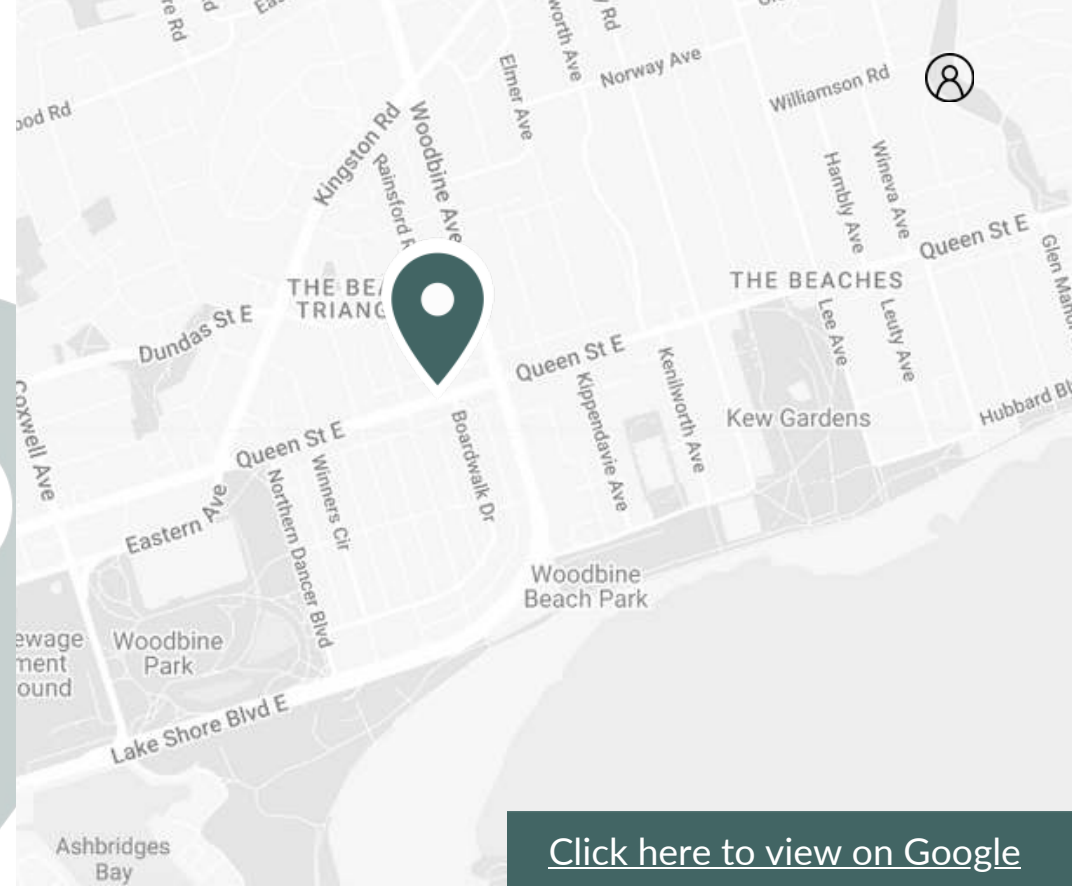


Toronto, Ontario



# About the Location

Just 20 minutes from the downtown Toronto core, on the bustling thoroughfare of Queen Street, is the charming 1842-1852 Queen Street East. This boutique 3 storey building is anchored by Starbucks and CIBC, serving the surrounding Beaches neighbourhood. This vibrant community is home to Toronto's most eclectic and unique shops and cafes, preserving a small-town vibe just a short walk to the lake.



# Neighborhood Features



5-MINUTE WALK TO  
WOODBINE PARK (350 M)



13-MINUTE WALK TO WOODBINE  
PARK (650 M)



15-MINUTE DRIVE TO DON  
VALLEY PARKWAY (7.5KM)



Nearest Bus line  
Hambly Ave at Queen St East North Side (900 m)



Nearest Rail line  
Queen St East at Sarah Ashbridge Ave (160 m)



Population (5km)  
314,009



Household Income (5km)  
\$122,406



Households (5km)  
131,316



Bike Score  
94



Walk Score  
95



Transit Score  
73

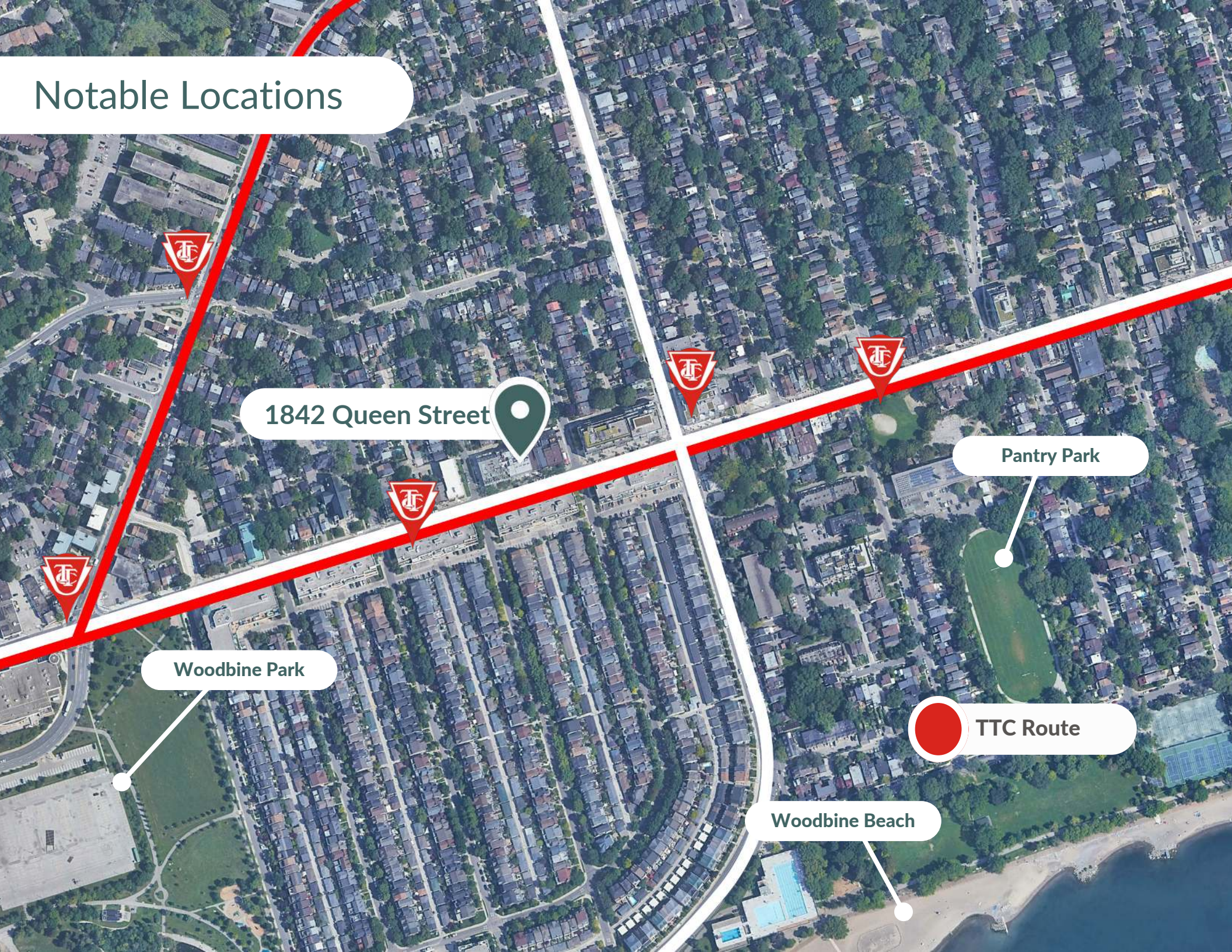


Traffic count  
27,934

## Near by amenities and tenants



# Notable Locations



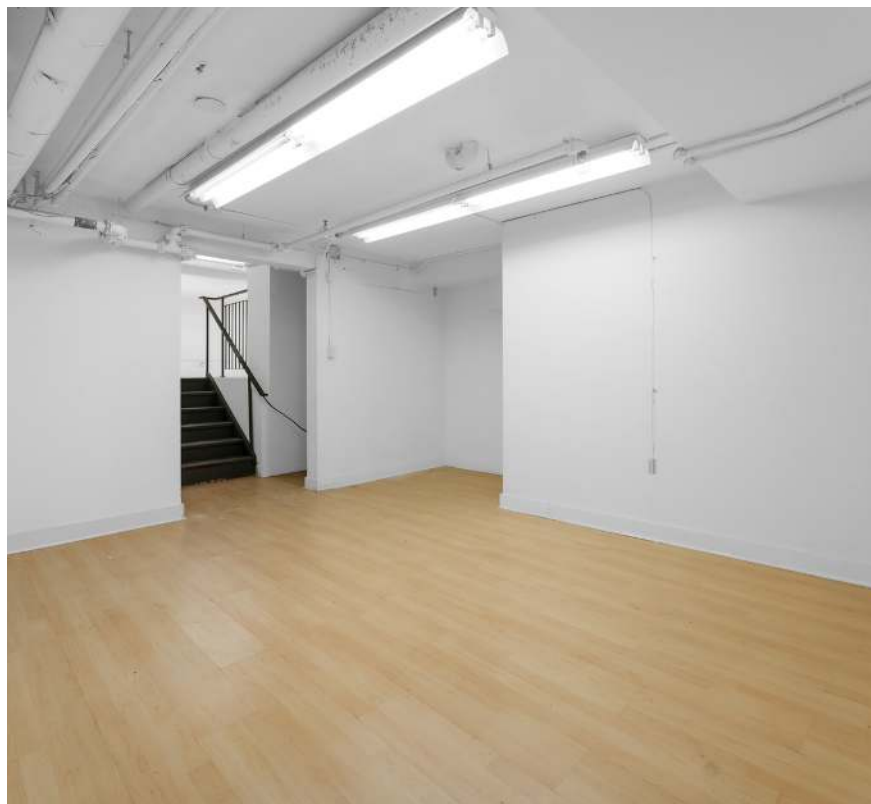
1842 Queen Street

Woodbine Park

Pantry Park

TTC Route

Woodbine Beach

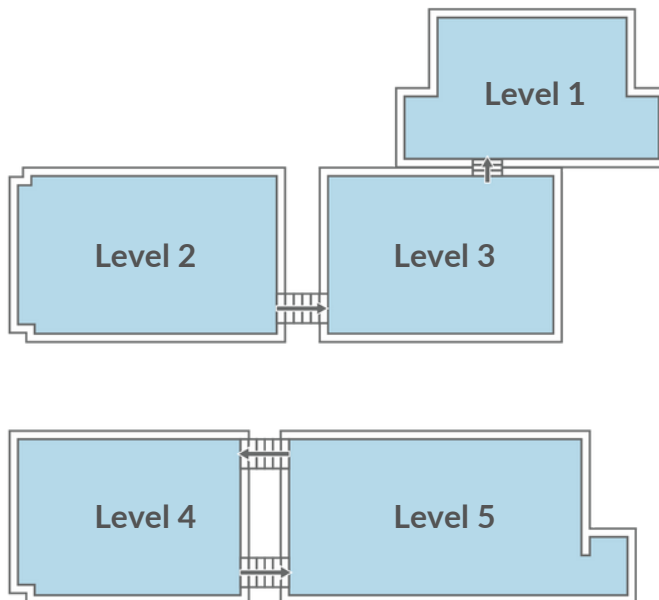




# Leasing Opportunities

<b>Size</b>	3,150 SF
<b>Available</b>	Immediately
<b>Ideal Uses</b>	Retail
<b>Additional Rent*</b>	\$28.60

*\*this is an approximate and rates are subject to change.*





**Maia Mehmeti**  
**Leasing Manager**  
[maia.mehmeti@fcr.ca](mailto:maia.mehmeti@fcr.ca)  
[647.203.0820](tel:647.203.0820)