

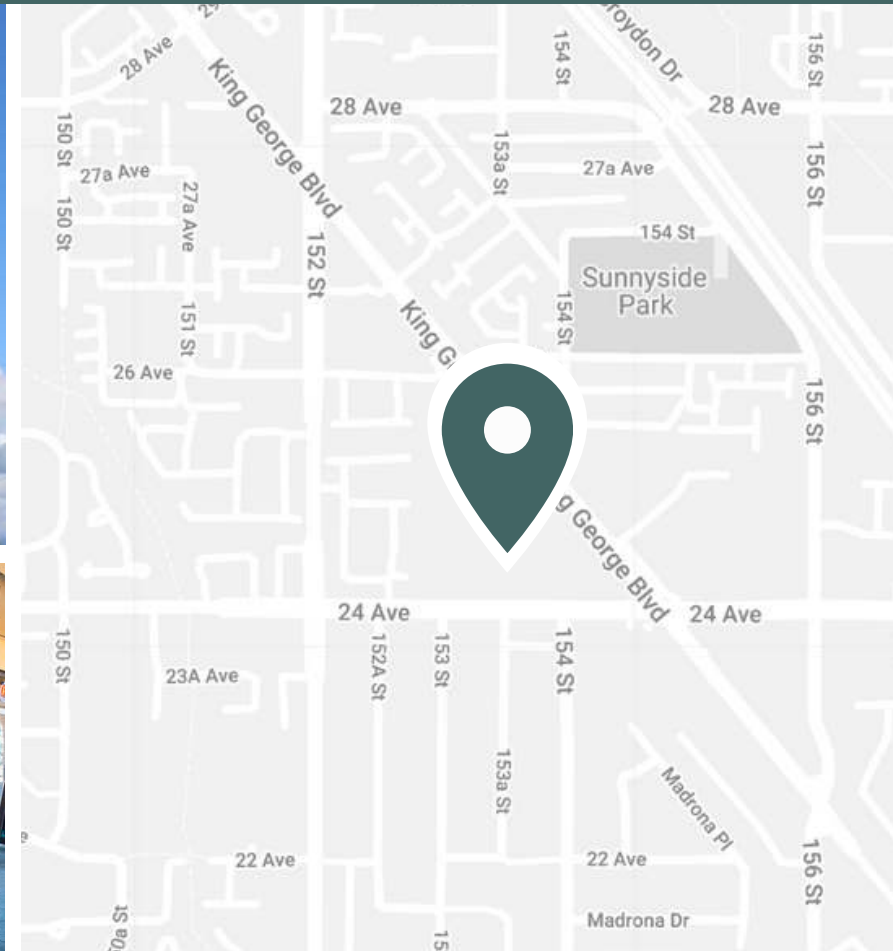
Peninsula Village Shopping Centre

15355 24th Avenue Surrey, British Columbia



Conveniently Located

Peninsula Village is an open-air shopping centre providing great amenities to the South Surrey community, one of the city's most affluent areas. The neighbourhood features one of the highest child counts per household in the Lower Mainland, making this centre a one-stop-shop for families. It is conveniently located with easy access to the United States through the Peace Arch and Pacific Highway border crossings. Anchored by Safeway, London Drugs, BC Liquor Store, Dollarama, a daycare known as Rothewood Academy, and many other services.



Neighborhood Features



4-MINUTE DRIVE TO THE VANCOUVER-BLAINE HWY



7-MINUTE DRIVE TO SOUTH SURREY ATHLETIC PARK



13 MINUTE DRIVE TO USA BORDER



Population (5km)
94,945



Bike Score
72



Household Income (5km)
\$132,602



Walk Score
83



Households (5km)
38,364



Traffic count
44,700



Leasing Opportunities

Unit Number	SF	ideal uses	Available
690	1,244	Office	Immediately

600	1,315	Retail	Immediately
-----	-------	--------	-------------

Available Available

Situated in the family-oriented neighbourhood of Surrey, British Columbia, Peninsula Village offers a 1,244 SF 2nd-floor office space as well as a 1,315 SF ground floor space. These availabilities provide convenient access and plenty of parking, as well as high visibility from King George Boulevard Highway. With a neighbourhood population of almost 100,000 people in just a 5 km radius and a high traffic count of 44,700 vehicles a day, this location is the perfect opportunity for your business.

Office - Additional Rent: \$15.35 psf*

Retail - Additional Rent: \$12.92 psf*

*2024 estimates

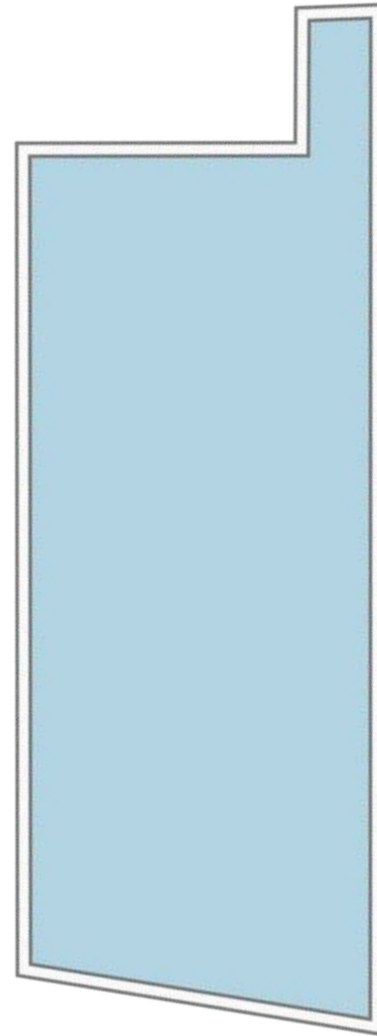
Base Rent: Contact Leasing Manager





Unit - 690

Size	1,244 SF
Unit Number	690
Available	Immediately
Ideal Use	Office
Additional Rent	\$15.35 psf*

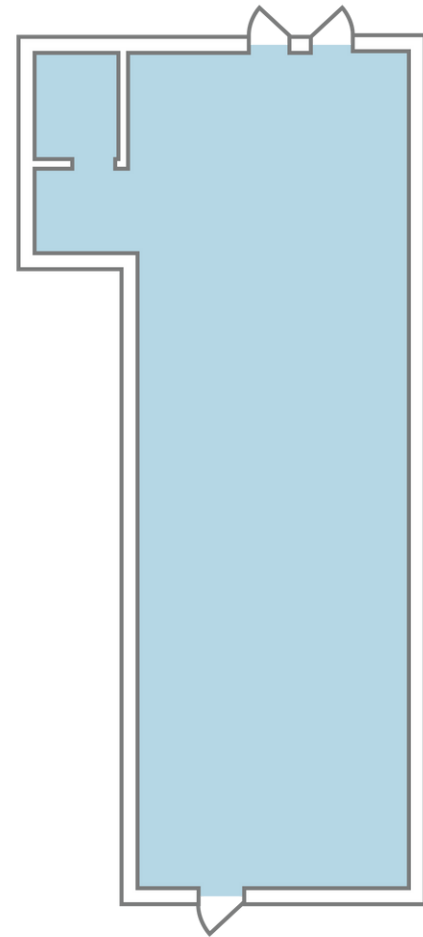


*2024 Estimates



Unit - 600

Size	1,315 SF
Unit Number	600
Available	Immediately
Ideal Use	Retail
Additional Rent	\$12.92 psf*



*2024 Estimates



Jennifer Devlin
Leasing Manager
jennifer.devlin@fcr.ca
604.506.2126