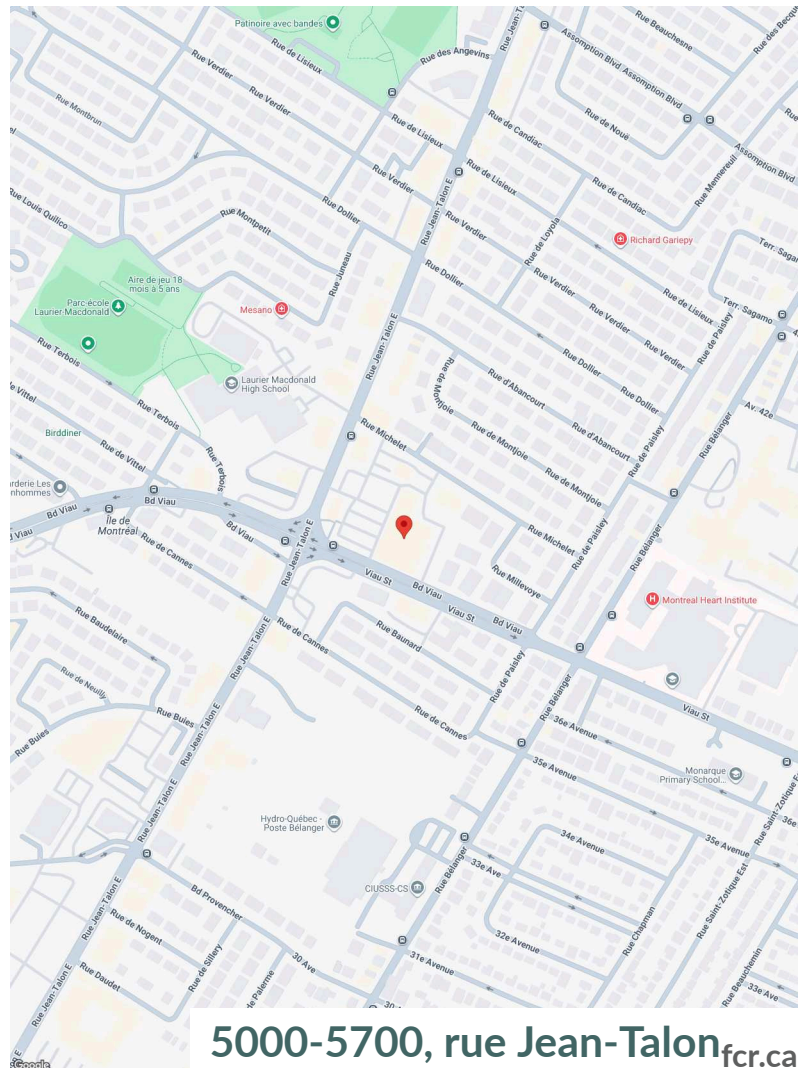




Located on the eastern portion of the island of Montreal, you'll find Saint-Leonard – a thriving, active residential area with a distinctive European accent.

Place Michelet is well-situated on the busy thoroughfare adjacent to Place Provencher and in close proximity to the stunning Place Viau. On a retail node with high traffic counts, this family-oriented shopping destination also benefits from the close proximity to schools and many growing neighbourhoods.

Anchored by IGA, SAQ and TD Canada Trust, this centre well serves the residents in this growing community.



Senior Director, Leasing Philip Haralambides
philip.haralambides@fcr.ca
514-241-5374

FCR Leasing fcr.ca
403.257.6888

5000-5700, rue Jean-Talon fcr.ca


1km
3km
5km

Household Income

\$84,554

\$88,500

\$90,113


Households

12,516

94,266

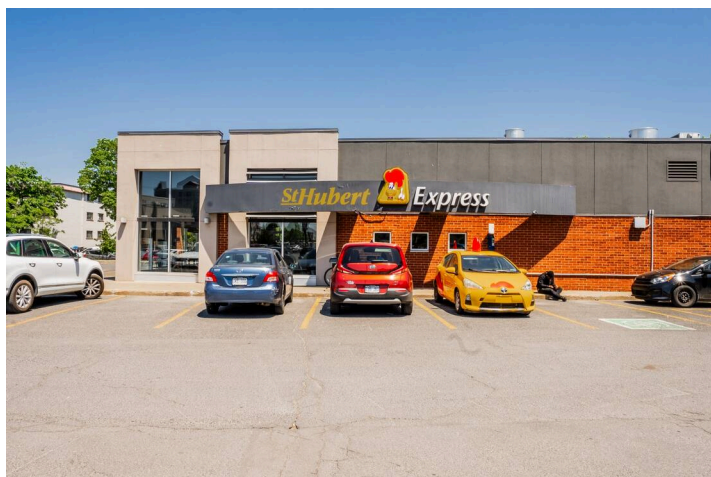
265,974


Population

29,879

212,228

574,155


**Traffic
Count**

 Rue Jean-Talon Est/
 Boul Viau : 19,675

**Walk
Score**

80


**Transit
Score**

71

Site Plan



Current Tenants

IGA
Sherwin-Williams Paints
Allstate Insurance
Thai Express
Pizza Pizza

SAQ
St. Hubert Bbq
TD Canada Trust
A&W



Contact



Philip Haralambides
Senior Director, Leasing
philip.haralambides@fcr.ca
514-241-5374

