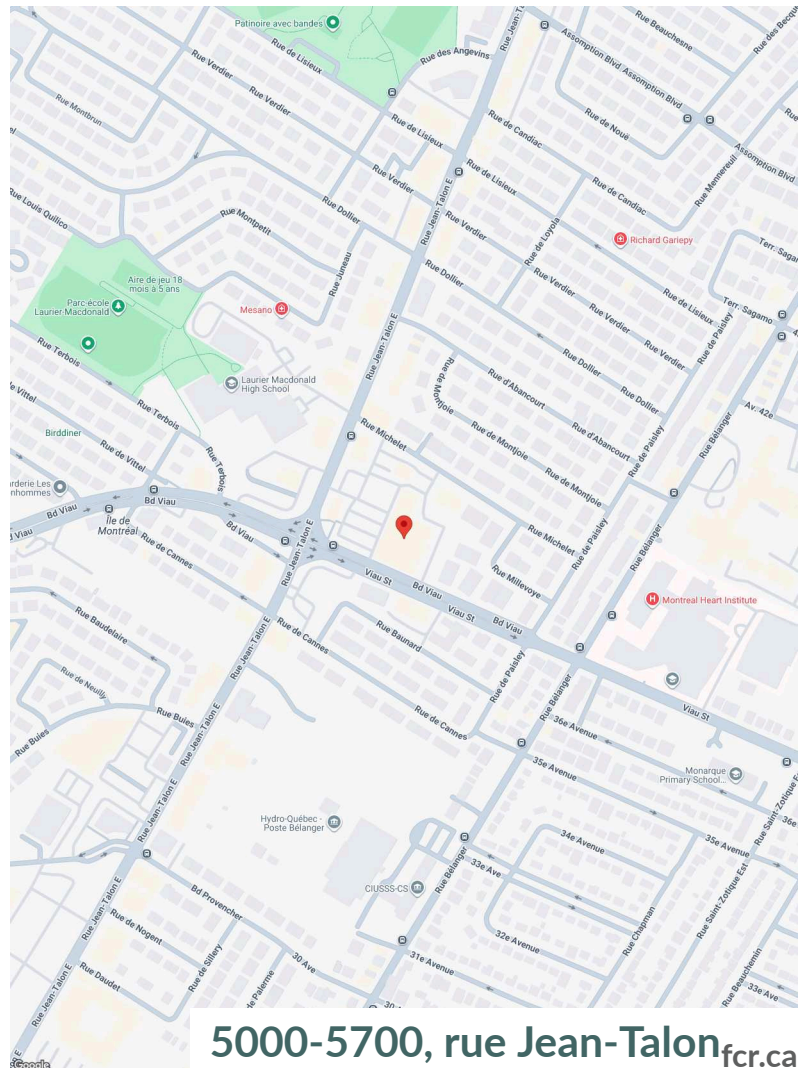




Located on the eastern portion of the island of Montreal, you'll find Saint-Leonard – a thriving, active residential area with a distinctive European accent.

Place Michelet is well-situated on the busy thoroughfare adjacent to Place Provencher and in close proximity to the stunning Place Viau. On a retail node with high traffic counts, this family-oriented shopping destination also benefits from the close proximity to schools and many growing neighbourhoods.

Anchored by IGA, SAQ and TD Canada Trust, this centre well serves the residents in this growing community.



**Senior Director, Leasing** Philip Haralambides  
philip.haralambides@fcr.ca  
514-241-5374

**FCR Leasing** fcr.ca  
403.257.6888

5000-5700, rue Jean-Talon [fcr.ca](http://fcr.ca)


**1km**
**3km**
**5km**

**Household Income**

\$84,554

\$88,500

\$90,113


**Households**

12,516

94,266

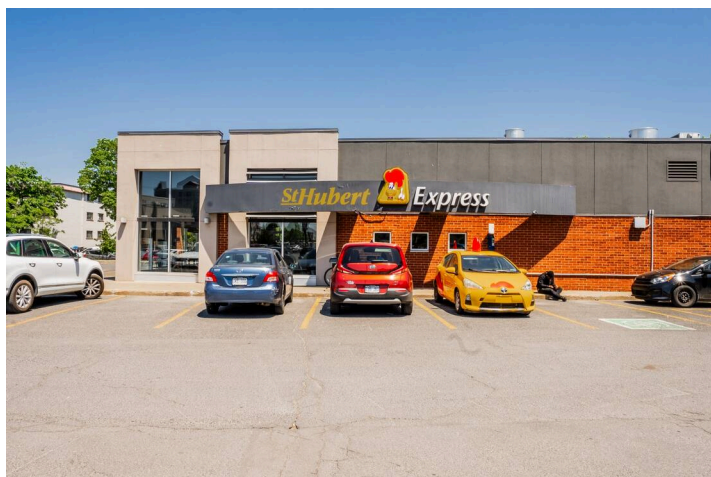
265,974


**Population**

29,879

212,228

574,155


**Traffic  
Count**

 Rue Jean-Talon Est/  
Boul Viau : 19,675

**Walk  
Score**

80


**Transit  
Score**

71

Site Plan



## Current Tenants

IGA  
Sherwin-Williams Paints  
Allstate Insurance  
Thai Express  
Pizza Pizza

SAQ  
St. Hubert Bbq  
TD Canada Trust  
A&W



## Contact



Philip Haralambides  
Senior Director, Leasing  
[philip.haralambides@fcr.ca](mailto:philip.haralambides@fcr.ca)  
514-241-5374

