



Located in the heart of downtown Montreal's Griffintown neighbourhood, at the corner of Peel and Wellington, is 100 Peel. Rich in architecture, history, and life, this once industrial town has turned into a vibrant neighbourhood for young families and professionals. Strategically located in Montreal's fastest growing neighbourhood and connected to the Alt Hotel, a trendy 154 room hotel, this centre offers an array of amenities. Ideally located on the busy corner of Peel St and Wellington St, paired with its easy access to public transit, 100 Peel sees high walking and transit scores.

Availability: 1,744 - 20,312 sf

Senior Leasing Manager FCR Leasing

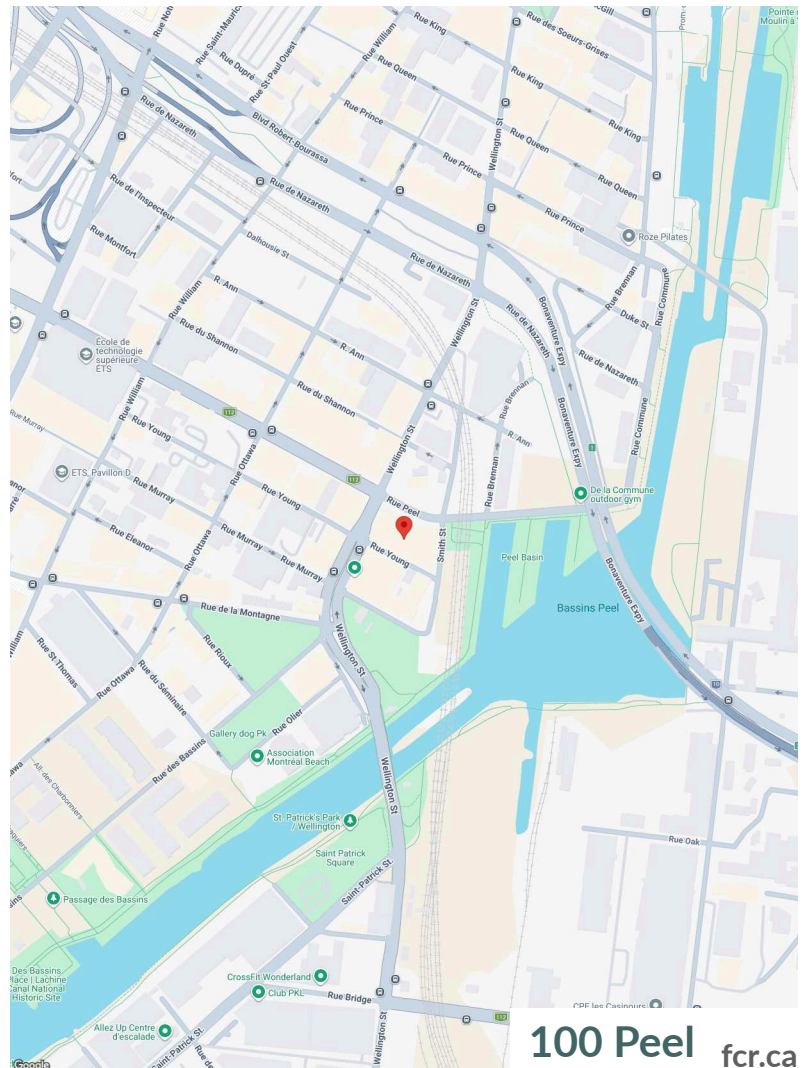
Spence Goodwin

fcr.ca

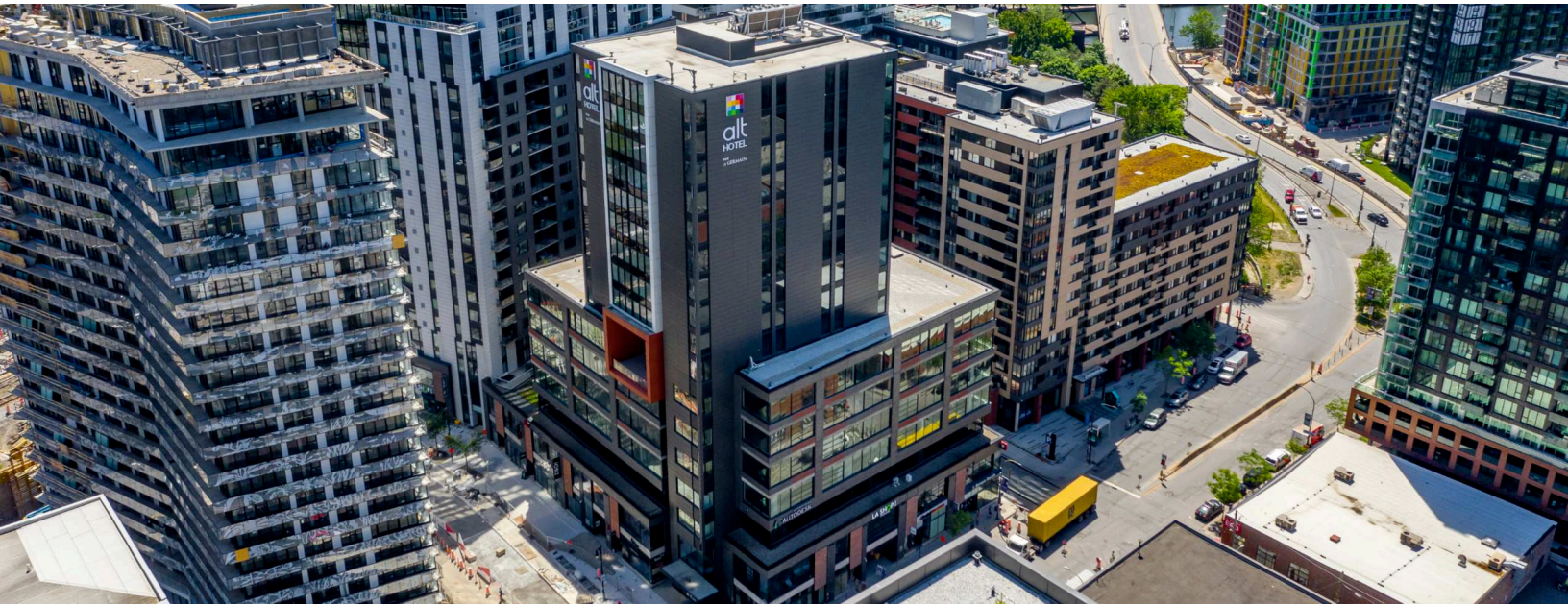
Spence.Goodwin4@fcr.leaseing@fcr.ca

514-252-2914

403.257.6888



100 Peel fcr.ca



1km

3km

5km



Household Income

\$123,417

\$109,023

\$122,301



Households

16,509

102,232

236,957

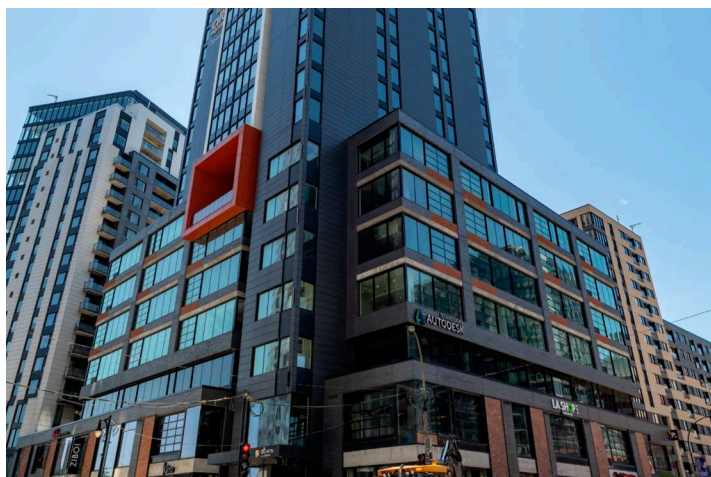


Population

28,401

184,679

456,445



Traffic
Count

Rue Wellington / Rue
Peel : 16,252



Walk
Score

95



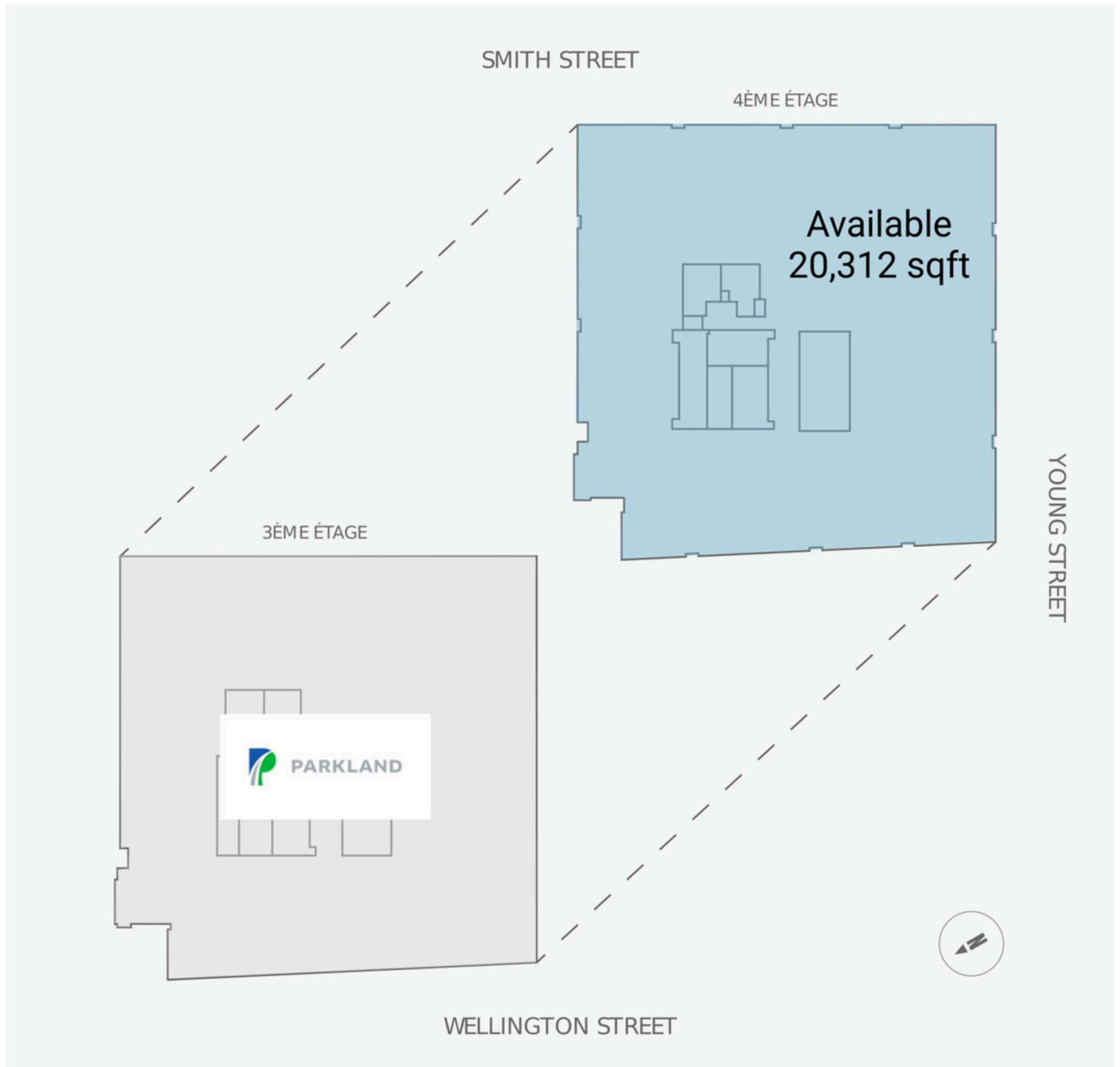
Transit
Score

89

Floor 1 and 2



Floor 3 and 4



Floor 5 and 6



Current Tenants

RBC Royal Bank
Nettoyeur Chatel
Presotea
KaleMart 24
Zibo
Structube

Groupe Germain
Palma
Eggstatic
PATTISON OUTDOOR
ADVERTISING (81254)
Parkland Corporation



Current Availability

1,744 sf	20573-A01007A
2,563 sf	20573-A02004A
20,312 sf	20573-AO4001A
20,304 sf	20573-AO5001A
18,966 sf	20573-AO6001A

Contact



Spence Goodwin
Senior Leasing Manager
Spence.Goodwin4@fcr.ca
514-252-2914

