



Located in the heart of downtown Montreal's Griffintown neighbourhood, at the corner of Peel and Wellington, is 100 Peel. Rich in architecture, history, and life, this once industrial town has turned into a vibrant neighbourhood for young families and professionals. Strategically located in Montreal's fastest growing neighbourhood and connected to the Alt Hotel, a trendy 154 room hotel, this centre offers an array of amenities. Ideally located on the busy corner of Peel St and Wellington St, paired with its easy access to public transit, 100 Peel sees high walking and transit scores.

**Availability:** 1,744 - 20,312 sf

## Leasing Manager

Spence Goodwin

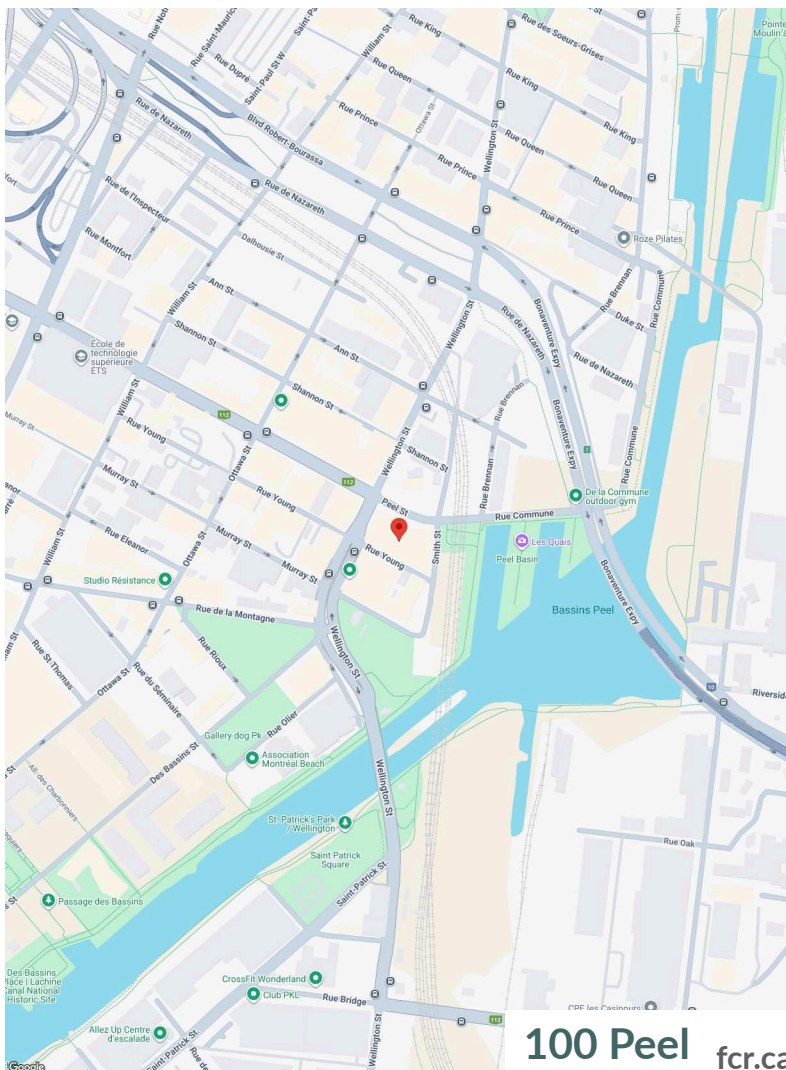
Spence.Goodwin4@fcr.ca

514-252-2914

## FCR Leasing

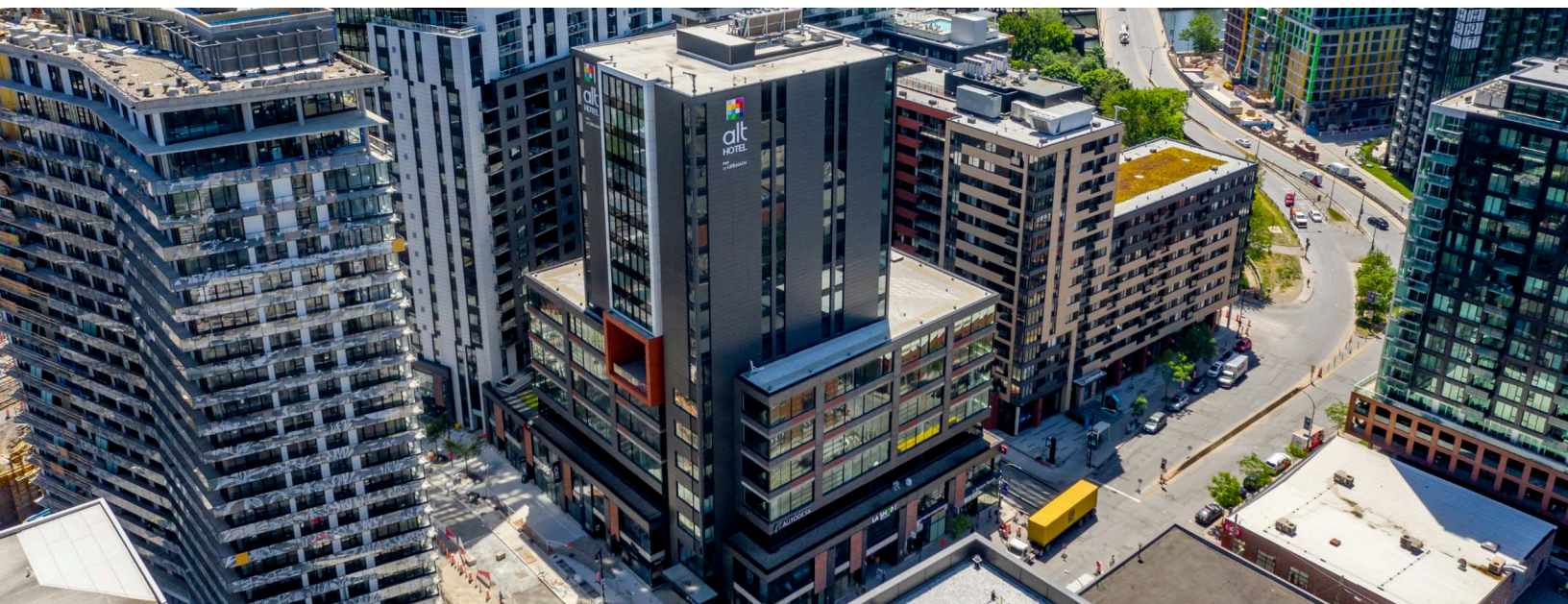
fcr.ca

403.257.6888



**100 Peel** fcr.ca





1km

3km

5km



Household Income

\$124,923

\$99,422

\$108,156



Households

10,527

85,333

213,371

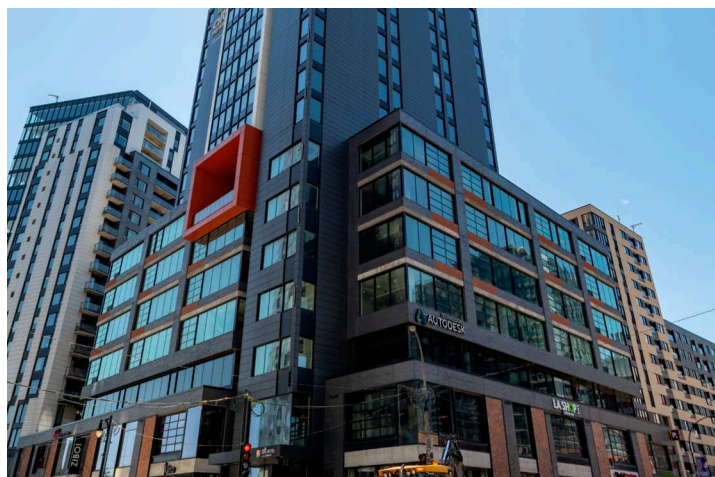


Population

17,859

153,663

412,320



Traffic  
Count

Rue Wellington / Rue  
Peel : 16,252



Walk  
Score

95



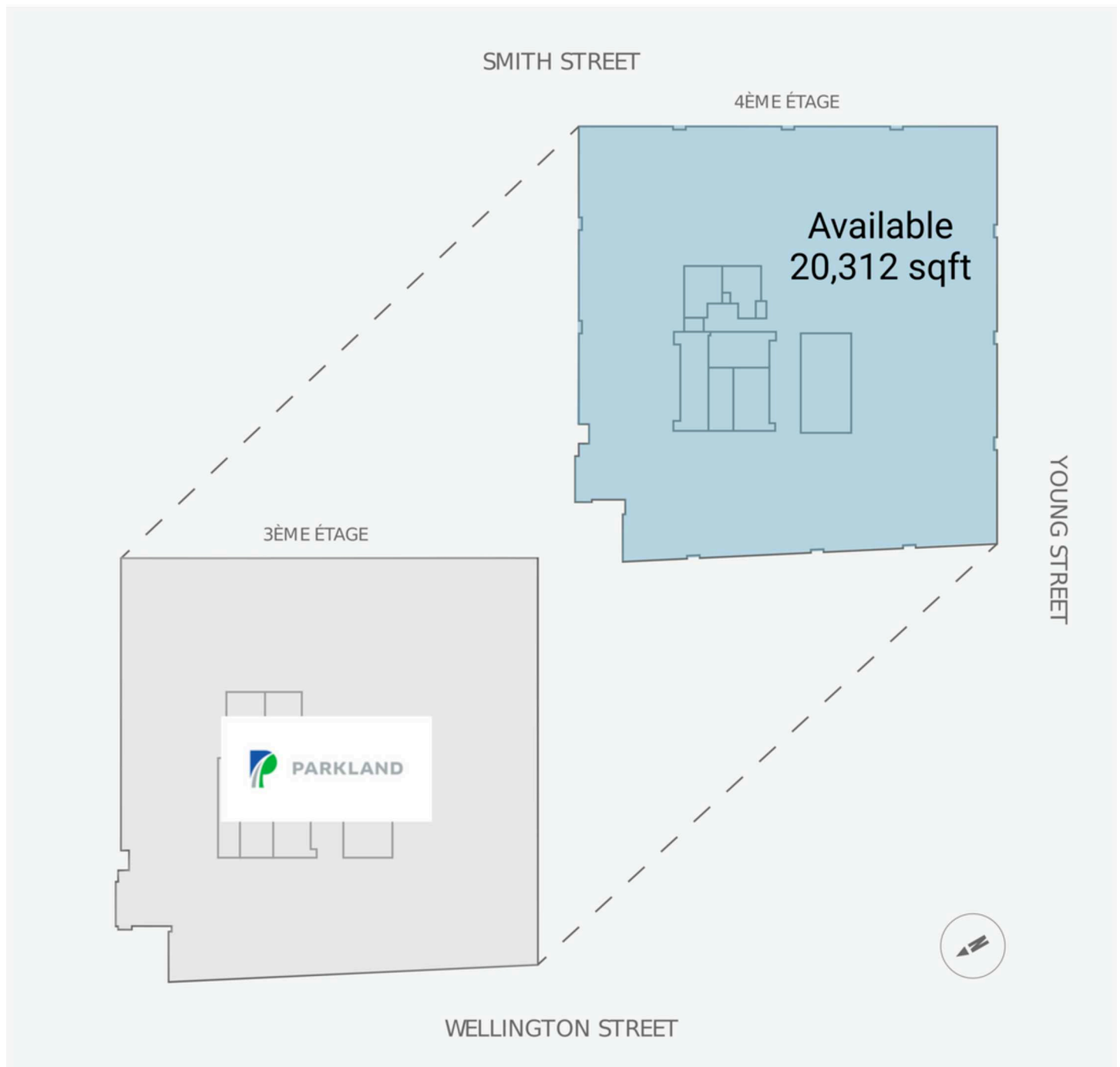
Transit  
Score

89

**Floor 1 and 2**



**Floor 3 and 4**



**Floor 5 and 6**



## Current Tenants

RBC Royal Bank	Groupe Germain
Nettoyeur Chatel	Palma
Presotea	Eggstatic
KaleMart 24	PATTISON OUTDOOR
Zibo	ADVERTISING (81254)
Structube	Parkland Corporation



## Current Availability

1,744 sf	20573-A01007A
2,563 sf	20573-A02004A
20,312 sf	20573-AO4001A
20,304 sf	20573-AO5001A
18,966 sf	20573-AO6001A

## Contact



Spence Goodwin  
Leasing Manager  
Spence.Goodwin4@fcr.ca  
514-252-2914



