



Located in the heart of downtown Montreal's Griffintown neighbourhood, at the corner of Peel and Wellington, is 100 Peel. Rich in architecture, history, and life, this once industrial town has turned into a vibrant neighbourhood for young families and professionals. Strategically located in Montreal's fastest growing neighbourhood and connected to the Alt Hotel, a trendy 154 room hotel, this centre offers an array of amenities. Ideally located on the busy corner of Peel St and Wellington St, paired with its easy access to public transit, 100 Peel sees high walking and transit scores.

Availability: 1,744 - 20,312 sf

Leasing Manager

Spence Goodwin

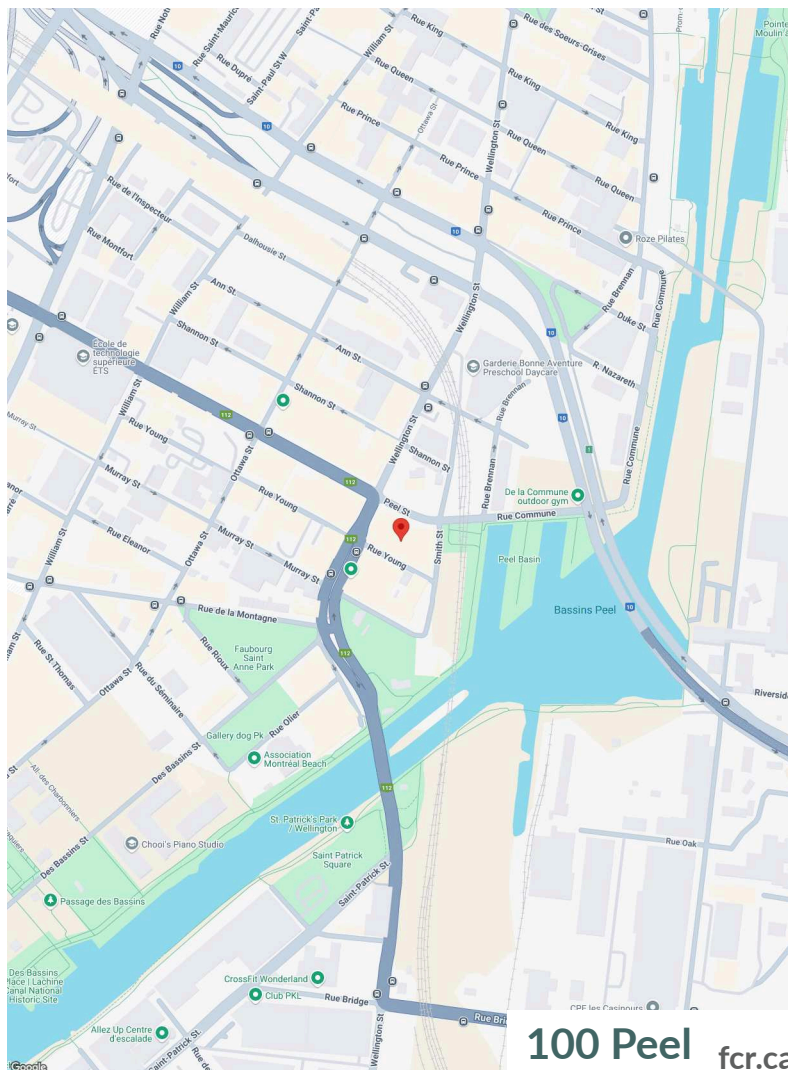
Spence.Goodwin4@fcr.ca

514-252-2914

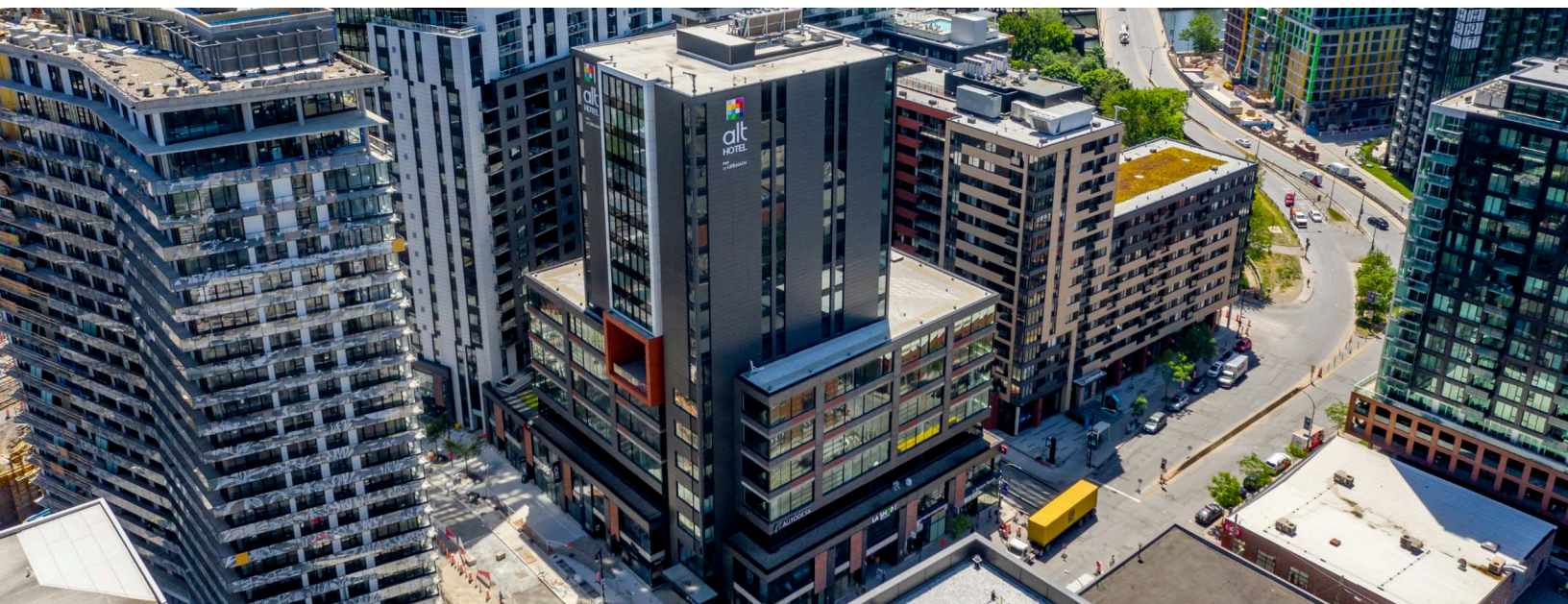
FCR Leasing

fcr.ca

403.257.6888

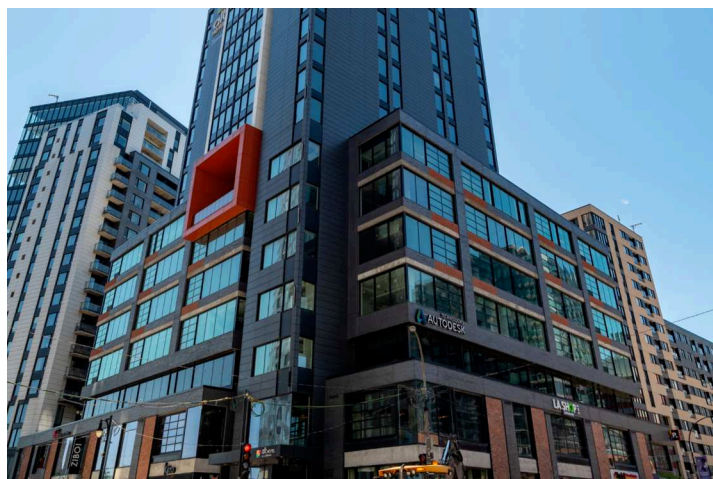


100 Peel fcr.ca


1km
3km
5km

Household Income
\$124,923
\$99,422
\$108,156

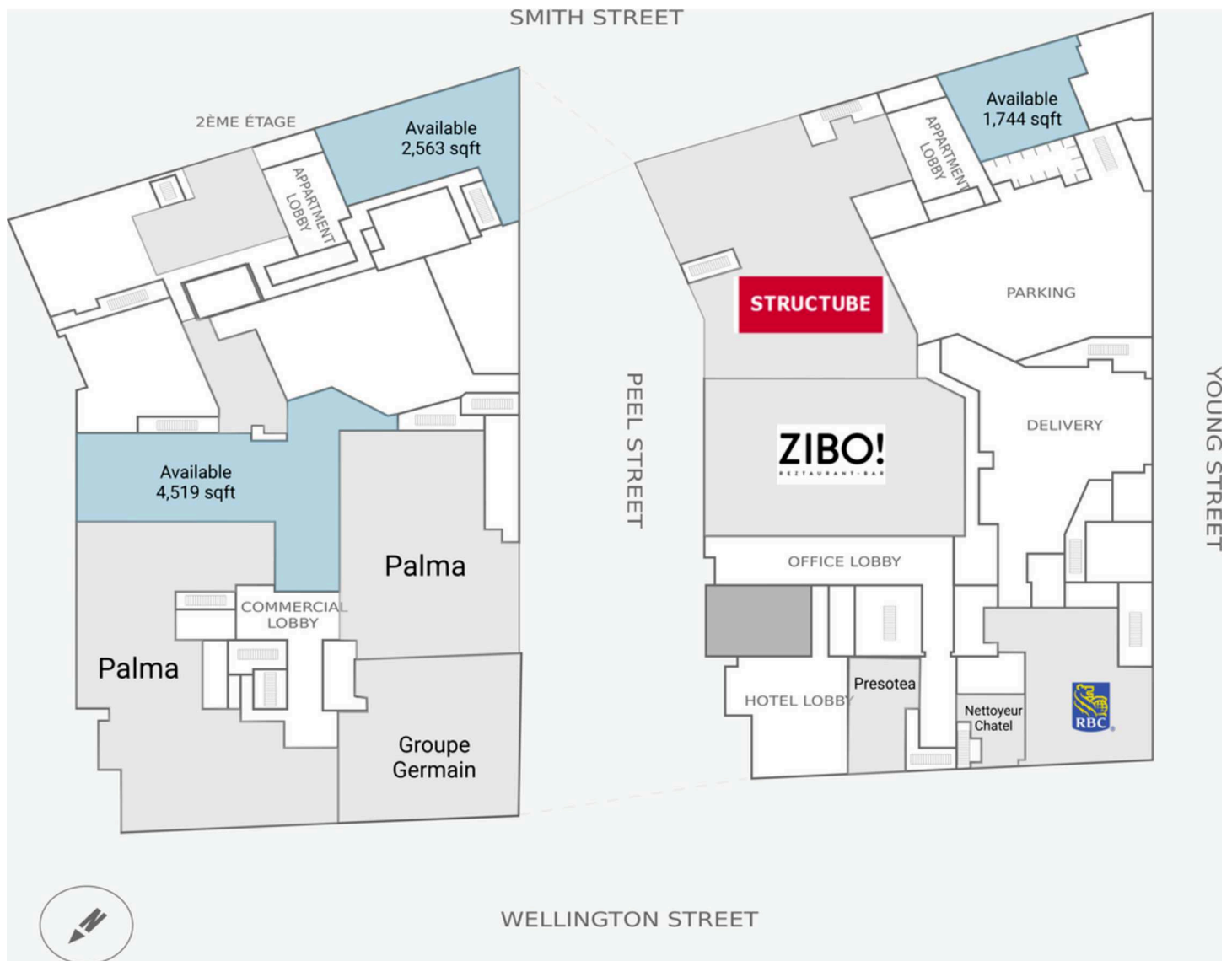
Households
10,527
85,333
213,371

Population
17,859
153,663
412,320

**Traffic
Count**
**Rue Wellington / Rue
Peel : 16,252**

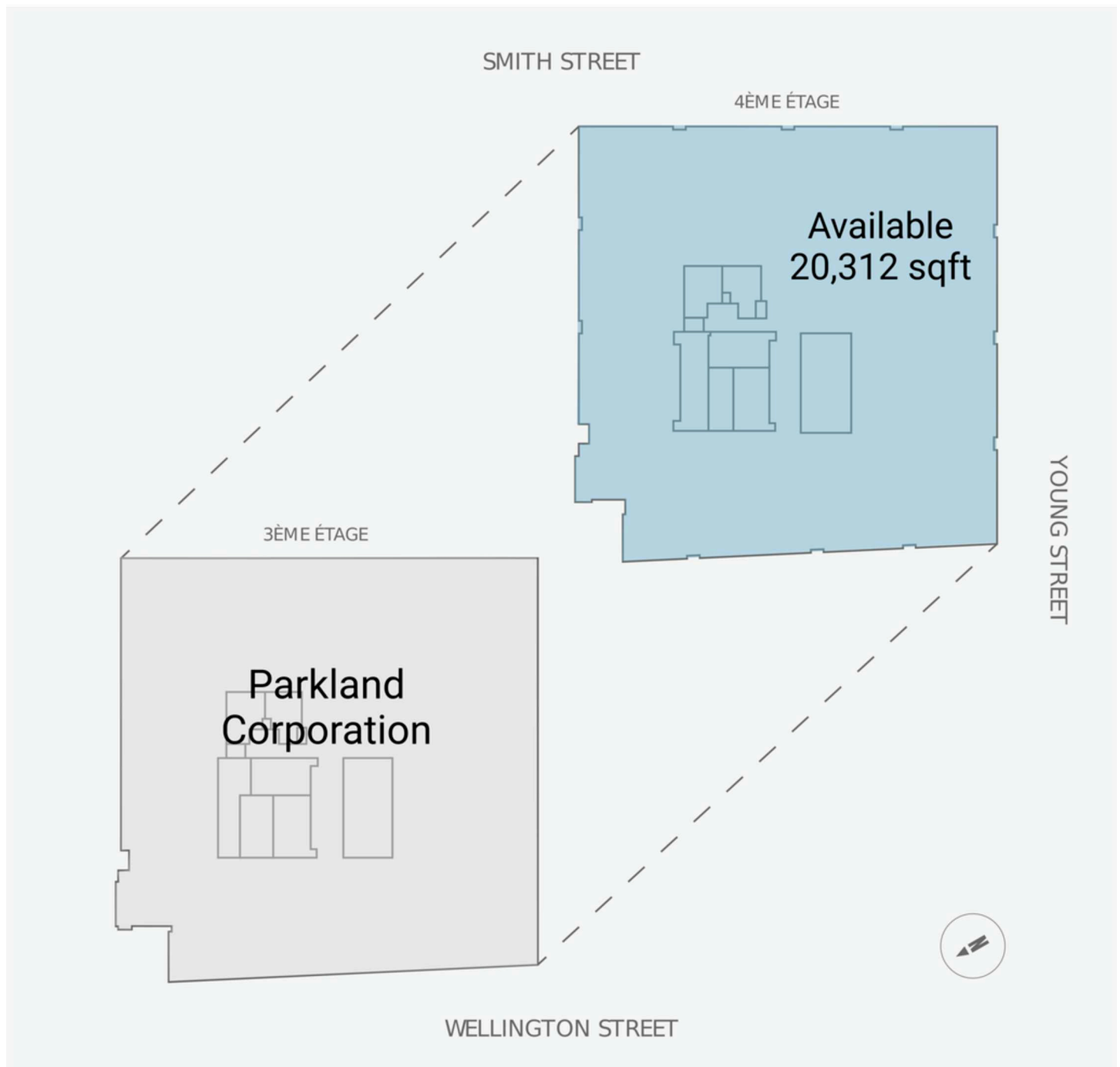
**Walk
Score**
95

**Transit
Score**
89

Floor 1 and 2



Floor 3 and 4



Floor 5 and 6



Current Tenants

RBC Royal Bank
Nettoyeur Chatel
Presotea
KaleMart 24
Zibo
Structube

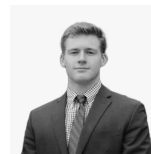
Groupe Germain
Palma
PATTISON OUTDOOR
ADVERTISING (81254)
Parkland Corporation



Current Availability

1,744 sf	20573-A01007A
4,519 sf	20573-A02003A
2,563 sf	20573-A02004A
20,312 sf	20573-AO4001A
20,304 sf	20573-AO5001A
18,966 sf	20573-AO6001A

Contact



Spence Goodwin
Leasing Manager
Spence.Goodwin4@fcr.ca
514-252-2914

