



Located in the heart of downtown Montreal's Griffintown neighbourhood, at the corner of Peel and Wellington, is 100 Peel. Rich in architecture, history, and life, this once industrial town has turned into a vibrant neighbourhood for young families and professionals. Strategically located in Montreal's fastest growing neighbourhood and connected to the Alt Hotel, a trendy 154 room hotel, this centre offers an array of amenities. Ideally located on the busy corner of Peel St and Wellington St, paired with its easy access to public transit, 100 Peel sees high walking and transit scores.

**Availability:** 1,744 - 20,312 sf

## Leasing Manager

Spence Goodwin

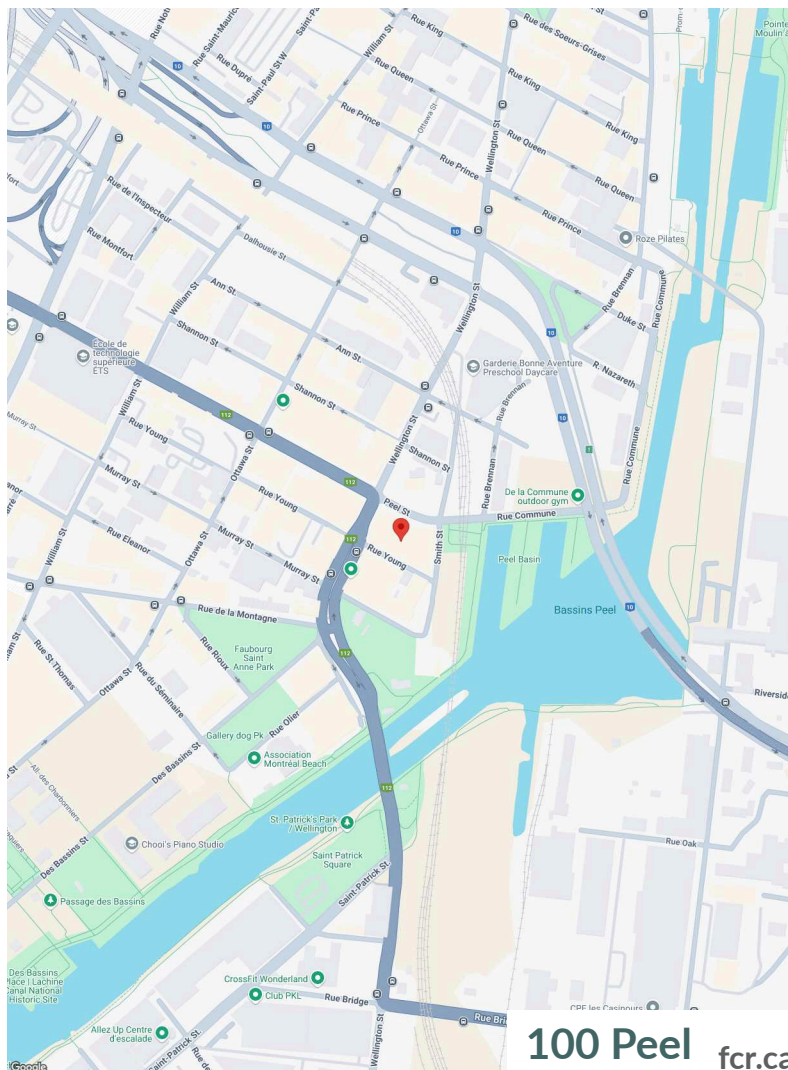
Spence.Goodwin4@fcr.ca

514-252-2914

## FCR Leasing

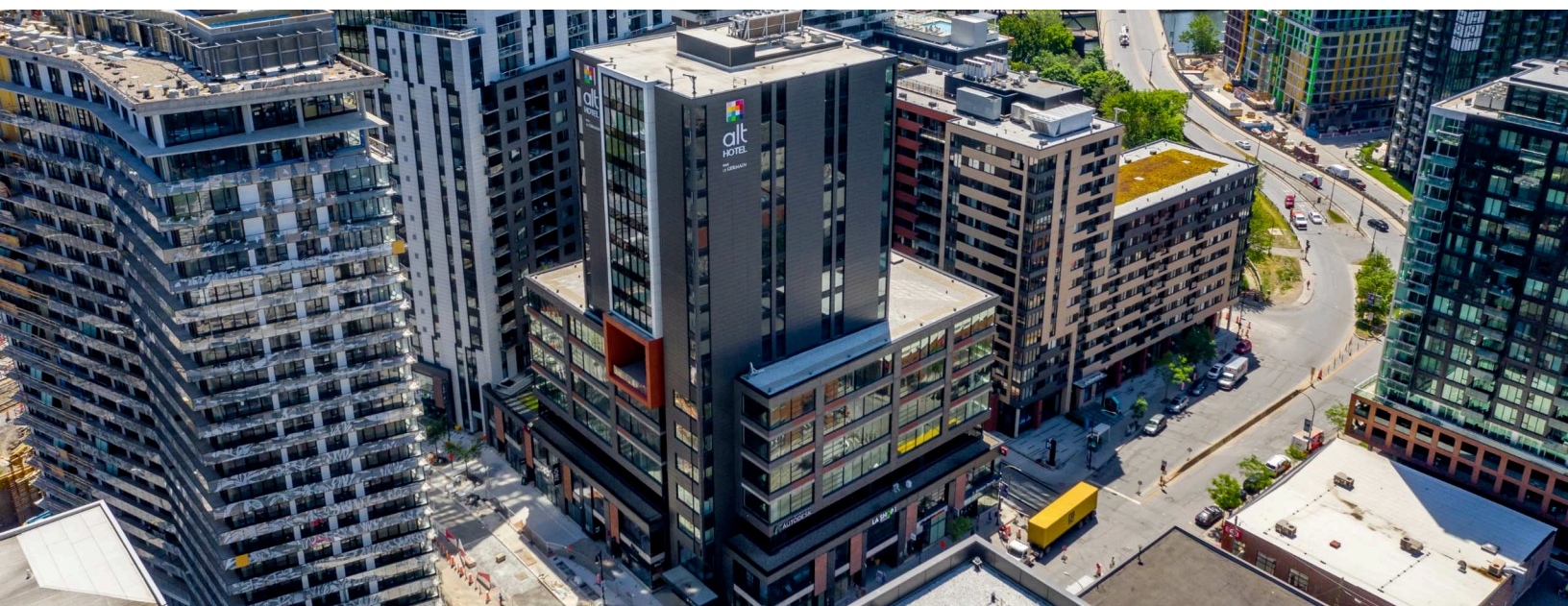
fcr.ca

403.257.6888



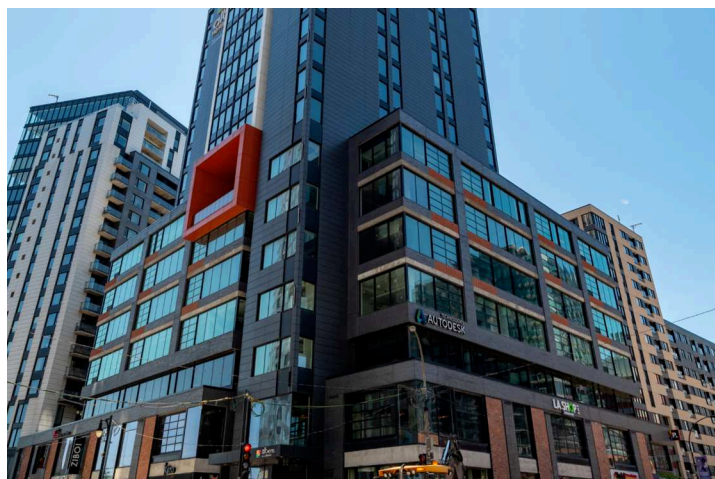
**100 Peel** fcr.ca




**1km**
**3km**
**5km**

**Household Income**
**\$124,923**
**\$99,422**
**\$108,156**

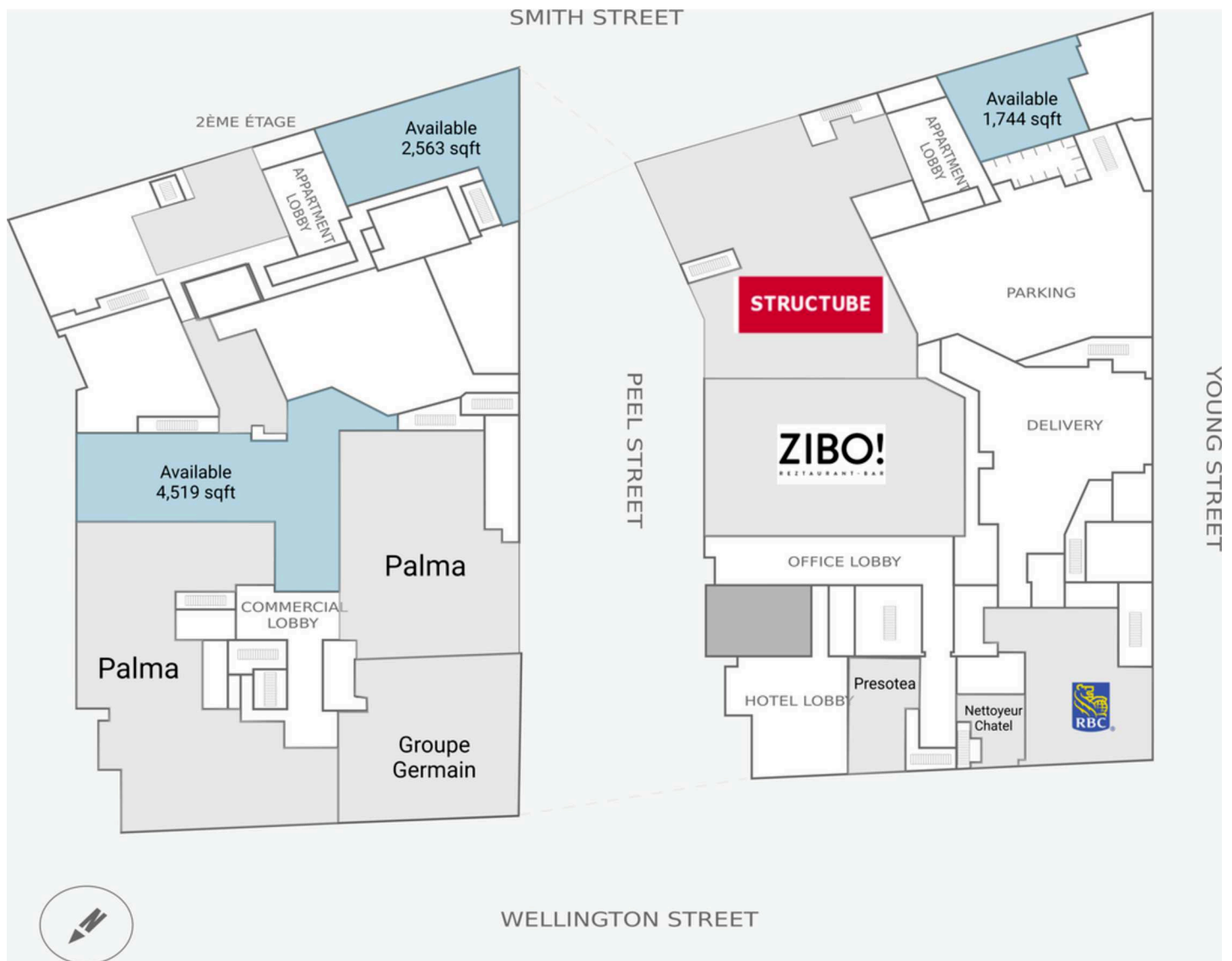
**Households**
**10,527**
**85,333**
**213,371**

**Population**
**17,859**
**153,663**
**412,320**

**Traffic  
Count**
**Rue Wellington / Rue  
Peel : 16,252**

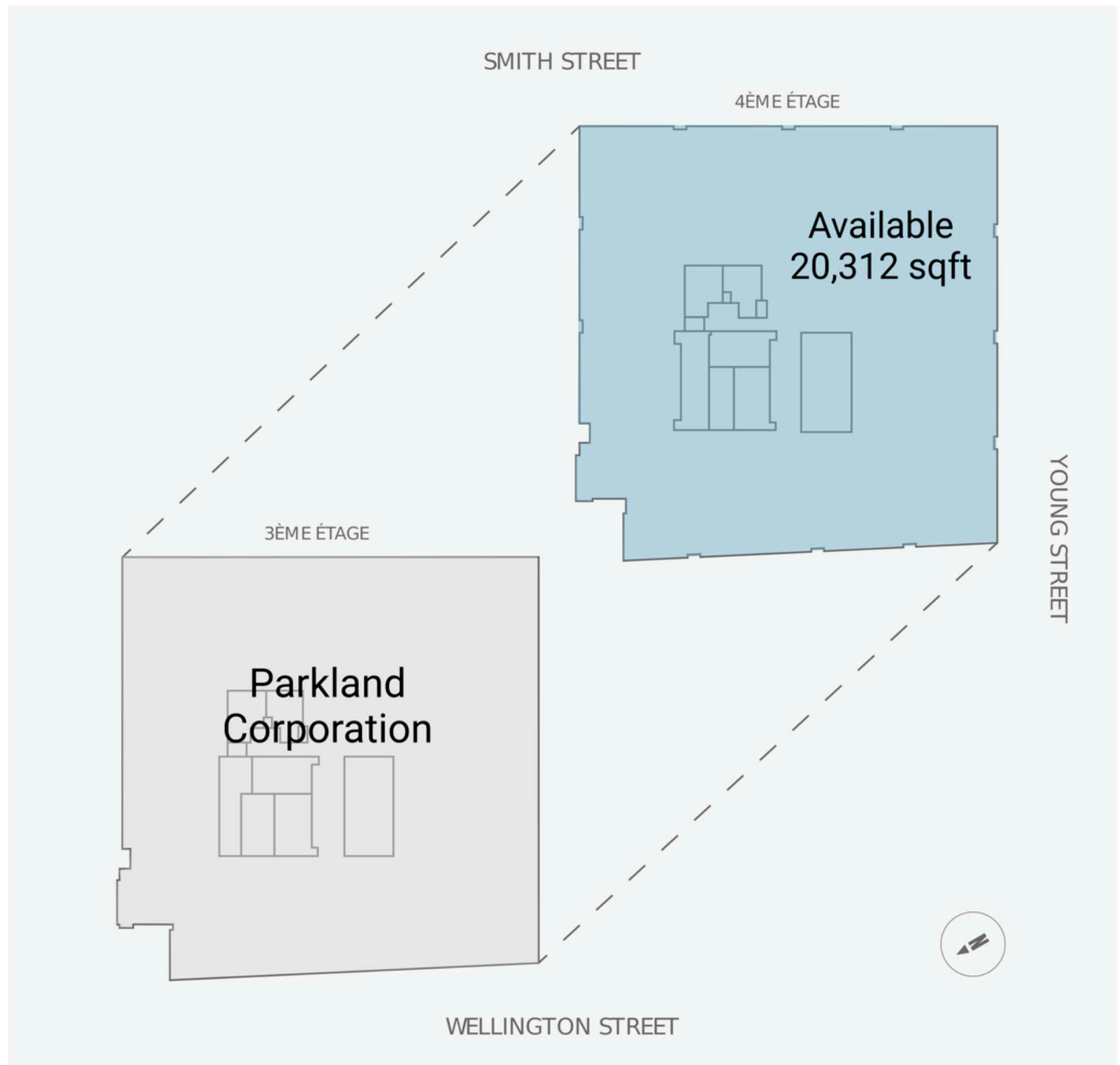
**Walk  
Score**
**95**

**Transit  
Score**
**89**

**Floor 1 and 2**



**Floor 3 and 4**



**Floor 5 and 6**



## Current Tenants

RBC Royal Bank  
Nettoyeur Chatel  
Presotea  
KaleMart 24  
Zibo  
Structube

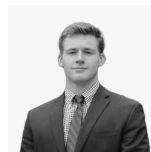
Groupe Germain  
Palma  
PATTISON OUTDOOR  
ADVERTISING (81254)  
Parkland Corporation



## Current Availability

1,744 sf	20573-A01007A
4,519 sf	20573-A02003A
2,563 sf	20573-A02004A
20,312 sf	20573-AO4001A
20,304 sf	20573-AO5001A
18,966 sf	20573-AO6001A

## Contact



Spence Goodwin  
Leasing Manager  
Spence.Goodwin4@fcr.ca  
514-252-2914



