



Architecturally developed to revitalize Montreal's fast-growing Griffintown neighbourhood is 100 Peel.

This site offers two levels of commercial space, providing this high-rise urban community with an attractive mix of commercial tenants to serve the daily needs of residents and visitors. Griffintown is a rapidly emerging neighbourhood that is attracting young families as well as professionals.

With 397,678 residents in a 5km radius, this contemporary centre is an excellent location to shop, eat, and be entertained. Ideally located on the busy corner of Peel St and Wellington St, paired with its easy access to public transit, 100 Peel sees high walking and transit scores.

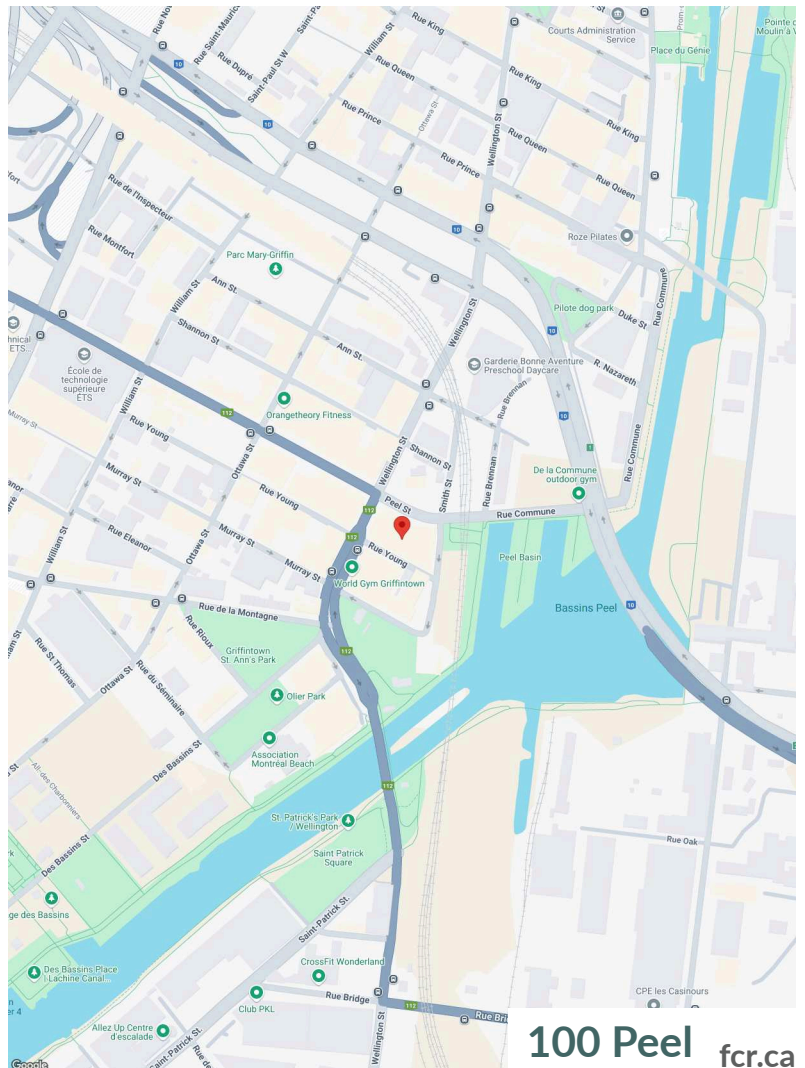
Availability: 1,744 - 20,312 sf

Leasing Manager

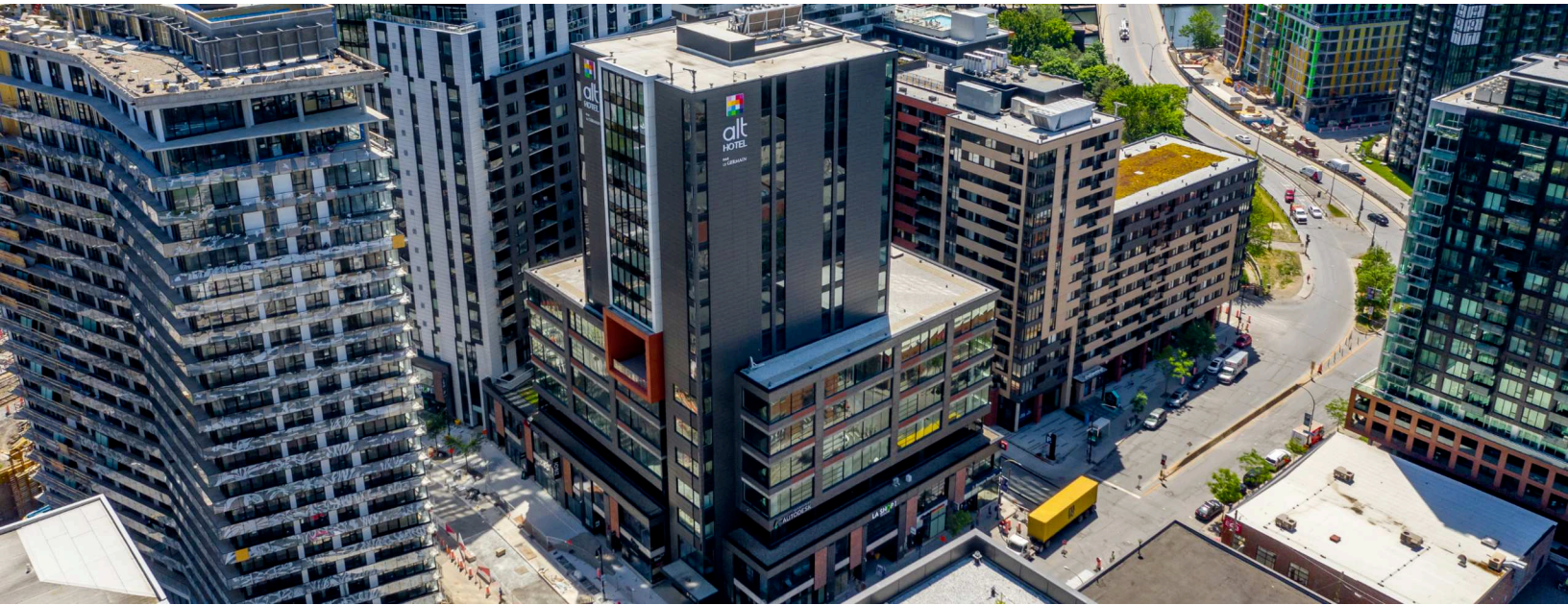
Spence Goodwin
Spence.Goodwin4@fcr.ca
514-252-2914

FCR Leasing

fcr.ca
403.257.6888



100 Peel fcr.ca



1km

3km

5km



Household Income

\$124,923

\$99,422

\$108,156



Households

10,527

85,333

213,371

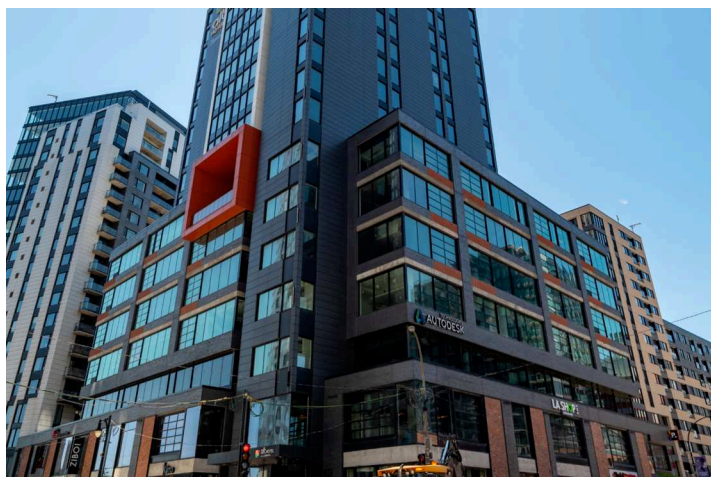


Population

17,859

153,663

412,320



Traffic
Count

Rue Wellington / Rue
Peel : 16,252



Walk
Score

95

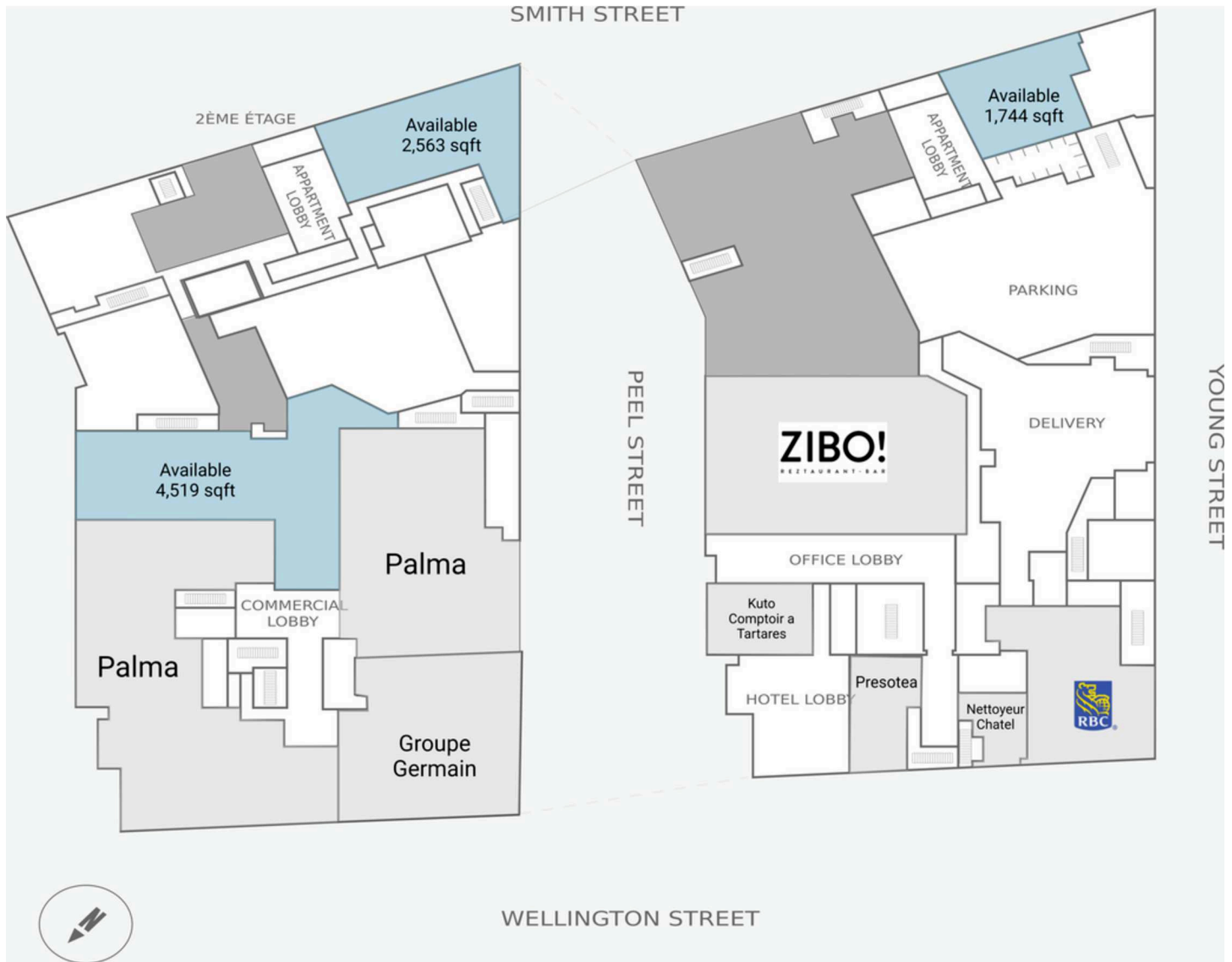


Transit
Score

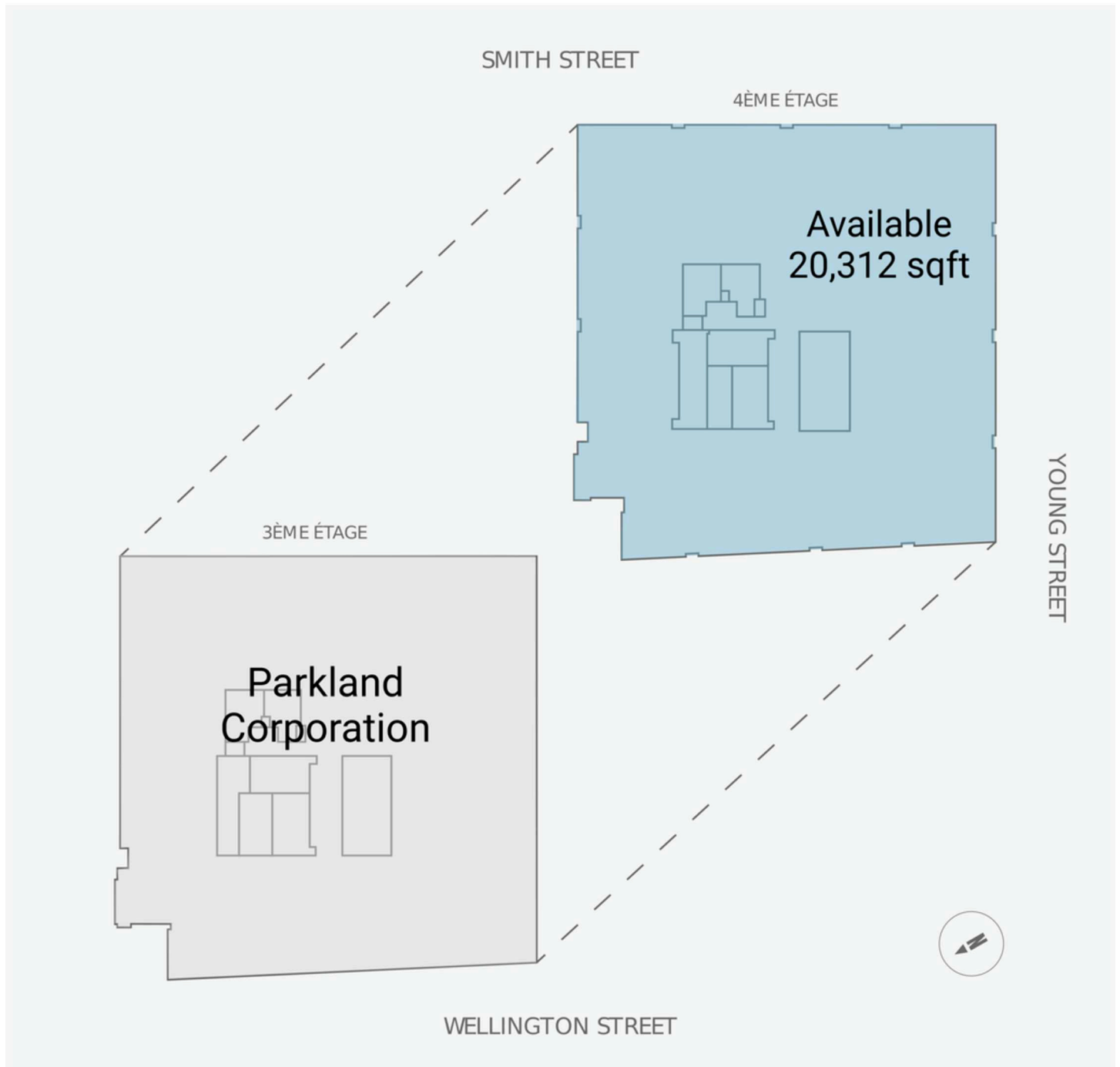
89



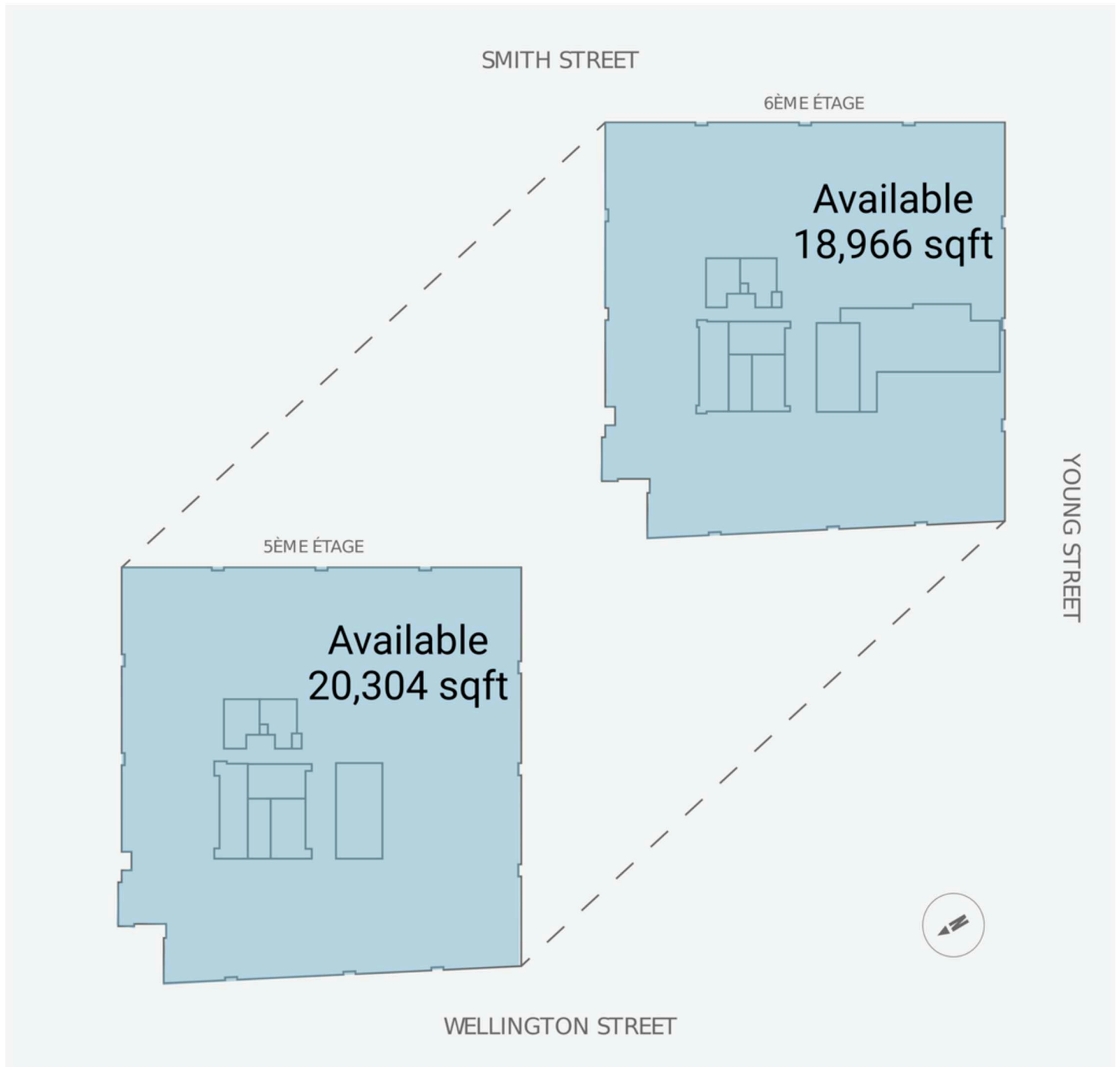
Floor 1 and 2



Floor 3 and 4



Floor 5 and 6



Current Tenants

RBC Royal Bank
Nettoyeur Chatel
Presotea
Kuto Comptoir a Tartares
Zibo
Structube

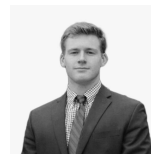
Groupe Germain
Palma
PATTISON OUTDOOR
ADVERTISING (81254)
Parkland Corporation



Current Availability

1,744 sf	20573-A01007A
4,519 sf	20573-A02003A
2,563 sf	20573-A02004A
20,312 sf	20573-AO4001A
20,304 sf	20573-AO5001A
18,966 sf	20573-AO6001A

Contact



Spence Goodwin
Leasing Manager
Spence.Goodwin4@fcr.ca
514-252-2914

