



Nestled minutes away from the historic Old Montreal in the heart of downtown Montreal's revitalized Griffintown neighbourhood, is Griffintown - 225 Peel.

Rich in architecture, history, and life, this once industrial town is turning into a vibrant neighbourhood for young families and professionals. Strategically located in an affluent community experiencing rapid growth, this centre offers an array of amenities. Ideally located on the busy corner of Peel St and Wellington St, paired with its easy access to public transit, 225 Peel sees high walking and transit scores.

With an attractive mix of retail tenants featuring Metro, Winners, TD Bank, and SAQ, this two-level urban centre offers a complete shopping experience for the residents of this growing community.

Availability: 6,180 sf

Leasing Manager

Spence Goodwin

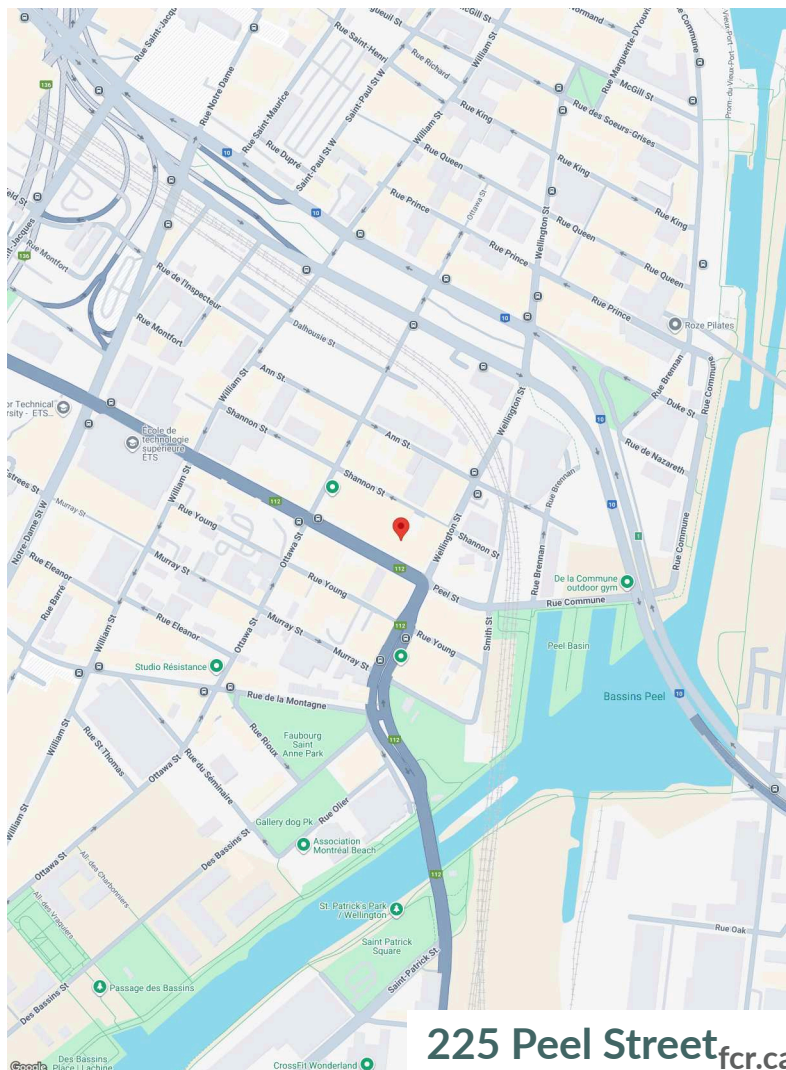
Spence.Goodwin4@fcr.ca

514-252-2914

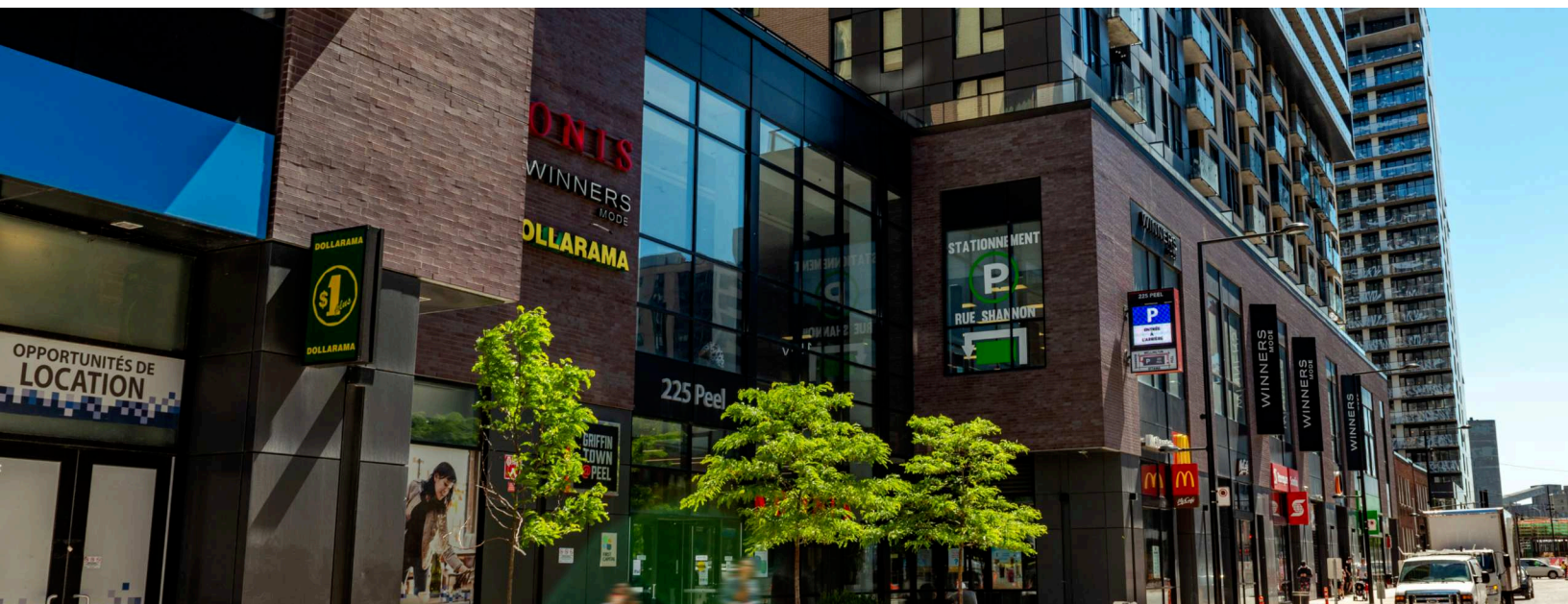
FCR Leasing

fcr.ca

403.257.6888



225 Peel Street fcr.ca


1km
3km
5km

Household Income

\$122,382

\$99,405

\$107,737


Households

11,288

88,080

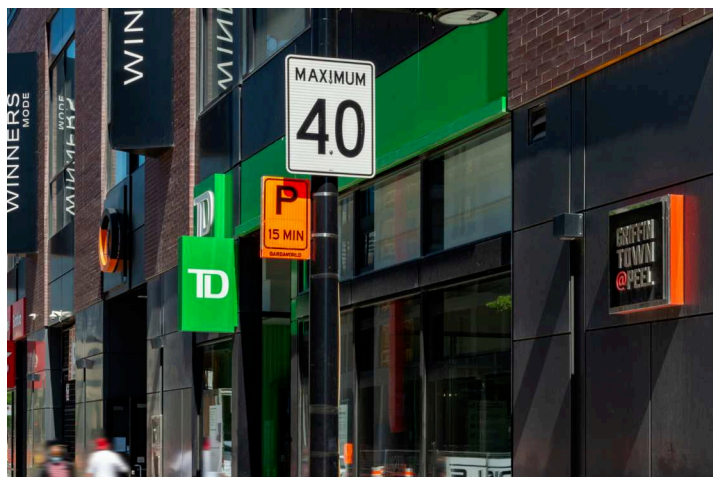
219,346


Population

19,542

159,011

424,229


**Traffic
Count**

Rue Peel / Rue
Wellington : 16,252

**Walk
Score**

95


**Transit
Score**

92

Site plan



Current Tenants

Metro
Winners
Anytime Fitness
Salon de Coiffure
Griffintown
Orange Theory Fitness
National Bank

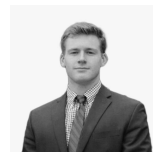
Tim Hortons
Matelas Bonheur
SAQ
Dollarama
McDonald's
Scotiabank
TD Canada Trust

**WINNERS**

Current Availability

6,180 sf 20575-A02006A

Contact



Spence Goodwin
Leasing Manager
Spence.Goodwin4@fcr.ca
514-252-2914

