



Nestled minutes away from the historic Old Montreal in the heart of downtown Montreal's revitalized Griffintown neighbourhood, is Griffintown - 225 Peel.

Rich in architecture, history, and life, this once industrial town is turning into a vibrant neighbourhood for young families and professionals. Strategically located in an affluent community experiencing rapid growth, this centre offers an array of amenities. Ideally located on the busy corner of Peel St and Wellington St, paired with its easy access to public transit, 225 Peel sees high walking and transit scores.

With an attractive mix of retail tenants featuring Metro, Winners, TD Bank, and SAQ, this two-level urban centre offers a complete shopping experience for the residents of this growing community.

**Availability: 6,180 sf**

## Leasing Manager

Spence Goodwin

Spence.Goodwin4@fcr.ca

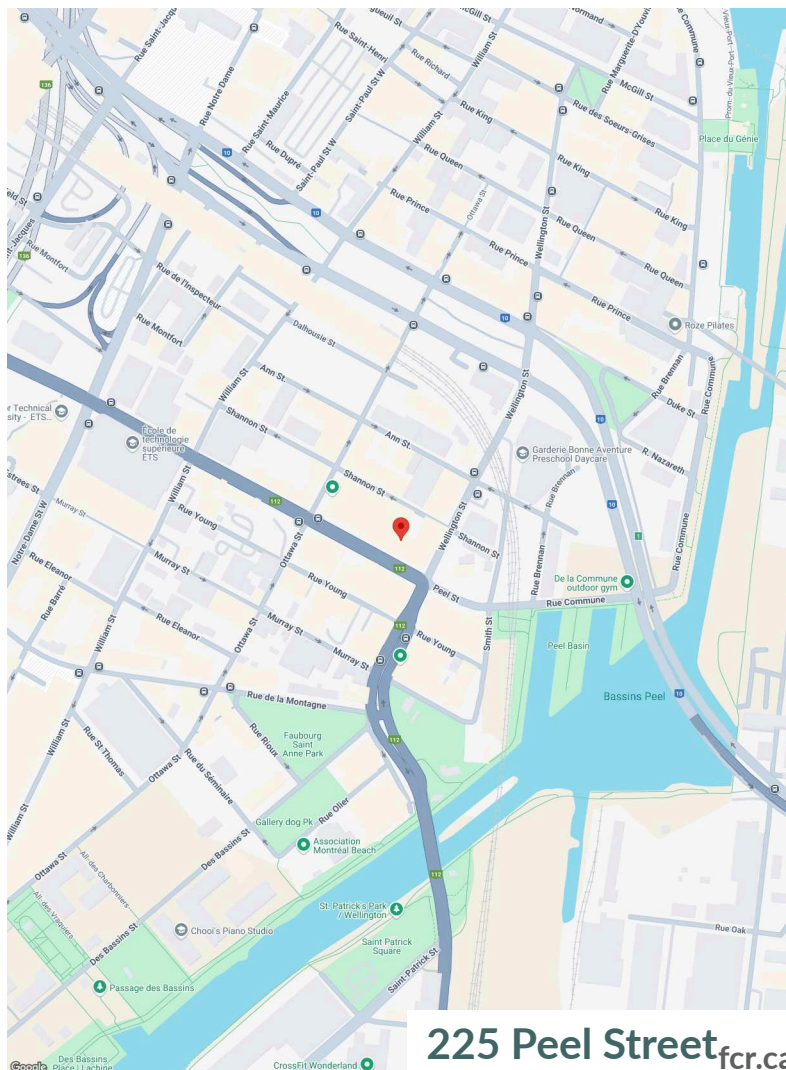
514-252-2914

## FCR Leasing

fcr.ca

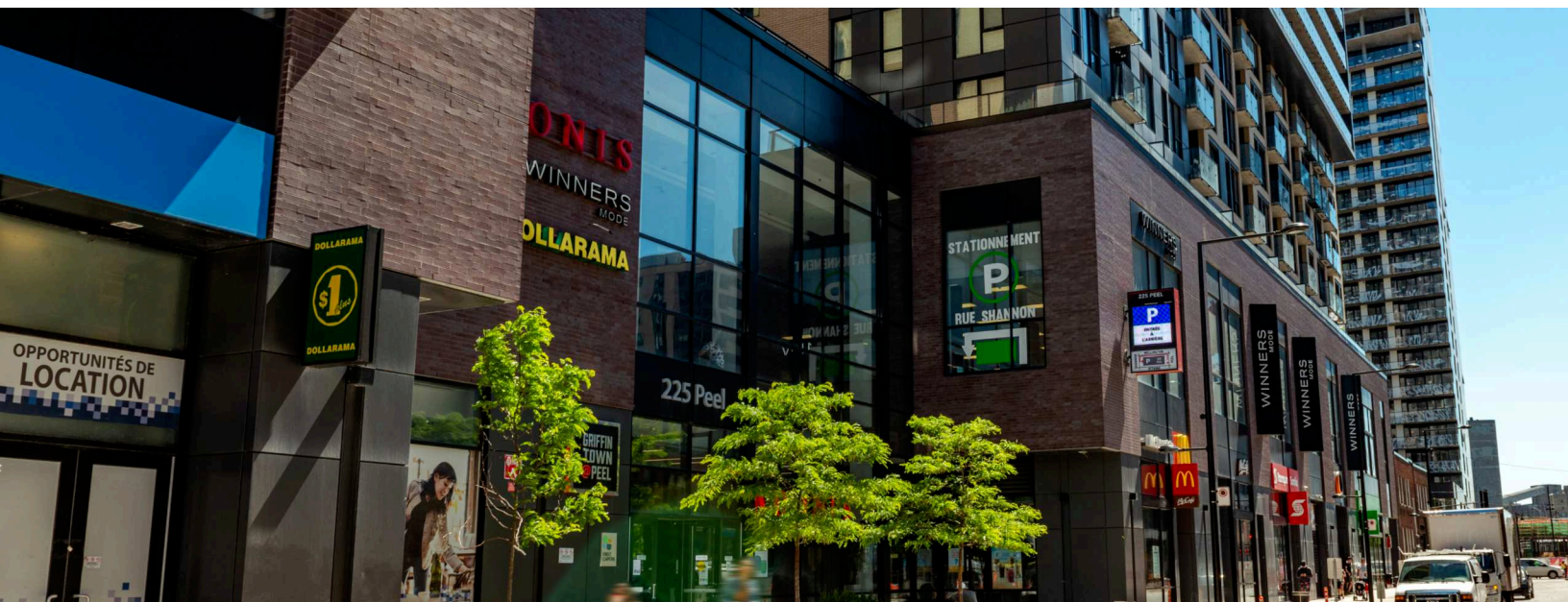
leasing@fcr.ca

403.257.6888



225 Peel Street [fcr.ca](http://fcr.ca)




**1km**
**3km**
**5km**

**Household Income**

\$122,382

\$99,405

\$107,737


**Households**

11,288

88,080

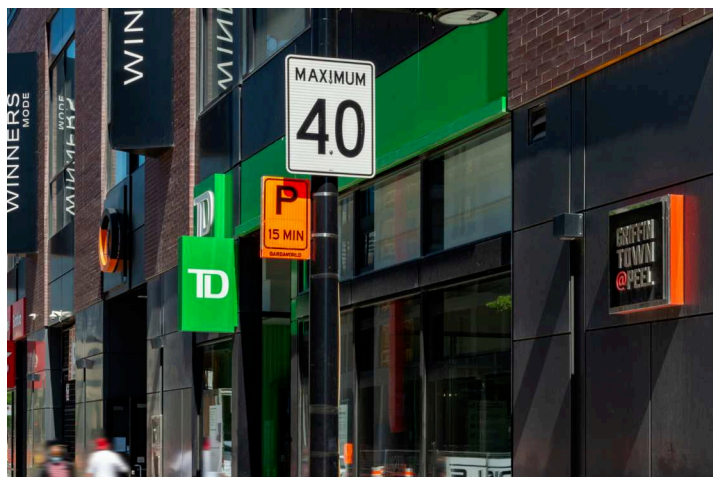
219,346


**Population**

19,542

159,011

424,229


**Traffic  
Count**

Rue Peel / Rue  
Wellington : 16,252

**Walk  
Score**

95


**Transit  
Score**

92



**Site plan**



## Current Tenants

Metro  
Winners  
Anytime Fitness  
Salon de Coiffure  
Griffintown  
Orange Theory Fitness  
National Bank

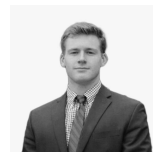
Tim Hortons  
Matelas Bonheur  
SAQ  
Dollarama  
McDonald's  
Scotiabank  
TD Canada Trust

**WINNERS**

## Current Availability

6,180 sf      20575-A02006A

## Contact



Spence Goodwin  
Leasing Manager  
Spence.Goodwin4@fcr.ca  
514-252-2914



